

MONOSTABILE - BISTABILE - TRISTABILE
MONOSTABLE - BISTABLE - TRISTABLE

CODICE DI ORDINAZIONE / ORDERING CODE

400PM X X X X X X

NEW



6

SEZIONE PRINCIPALE TIPO DI BLOCCO DELLA LEVA
MAIN SECTION - LEVER STOP TYPE

- 1 = MONOSTABILE / *MONOSTABLE*
- 2 = BISTABILE / *BISTABLE*
- 3 = TRISTABILE / *TRISTABLE*

USCITA ATTACCHI PNEUMATICI SEZIONE PRINCIPALE O SECONDARIE
PNEUMATIC PORTS - MAIN OR SECONDARY SECTIONS

- 0 = CON ATTACCHI RAPIDI - TUBO Ø 6 (SOLO INFERIORE)
RAPID T6 (ONLY BOTTOM)
- 2 = CON ATTACCHI RAPIDI - TUBO 1/4" (SOLO INFERIORE)
RAPID 1/4" (ONLY BOTTOM)
- 3 = M10x1 (SOLO LATERALE) / M10x1 (ONLY SIDE)

ATTACCHI ARIA / *AIR PORTS*

- B = INFERIORI / *BOTTOM*
- L = LATERALI / *SIDE*

A = CURVA PROPORZIONALE (SOLO LATERALE) / *PROPORTIONAL CURVE (ONLY SIDE)*

B = CURVA ON/OFF (SOLO INFERIORE) / *ON/OFF CURVE (ONLY BOTTOM)*

TIPO DI VERSIONE DI UNA O PIÙ SEZIONI SECONDARIE / *TYPE OF ONE OR MORE SECONDARY SECTIONS:*

- 0 = SOLO SEZIONE PRINCIPALE / *MAIN SECTION ONLY*
- 1 = 1 COMANDO PTO / *1 PTO CONTROL*
- 2 = 1 COMANDO PTO + 1 AUSILIARE / *1 PTO CONTROL + 1 AUXILIARY CONTROL*
- 3 = 1 COMANDO PTO + 2 AUSILIARI / *1 PTO CONTROL + 2 AUXILIARY CONTROL*
- 6 = 1 COMANDO PUSH-PULL / *1 PUSH-PULL CONTROL*
- 7 = 1 COMANDO PTO + 1 PUSH-PULL MONOSTABILE / *1 PTO CONTROL + 1 PUSH-PULL MONOSTABLE CONTROL*

TIPO DI SEZIONE / *SECTION TYPE*

- A = SOLO SEZIONE PRINCIPALE / *MAIN SECTION ONLY*
- B = SEZIONE PRINCIPALE + SECONDARIE / *MAIN + SECONDARY SECTIONS*
- C = SOLO SEZIONE AUSILIARE / *AUXILIARY SECTION ONLY*

COMANDO PNEUMATICO / *PNEUMATIC CONTROL*

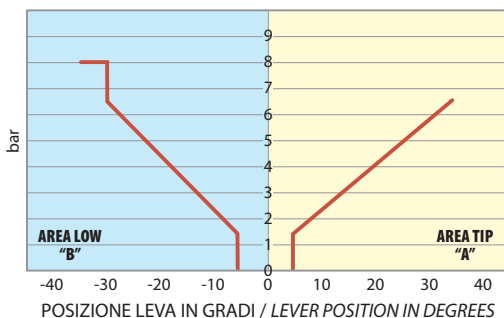
CARATTERISTICHE TECNICHE / TECHNICAL SPECIFICATIONS

Fluido utilizzato <i>Working medium</i>	aria / <i>air</i>
Pressione di esercizio <i>Working pressure</i>	max 10 bar min 5 bar
Temperatura di impiego <i>Operative temperature</i>	- 30° + 80°C
Passaggio nominale <i>Nominal diameter</i>	Ø 4

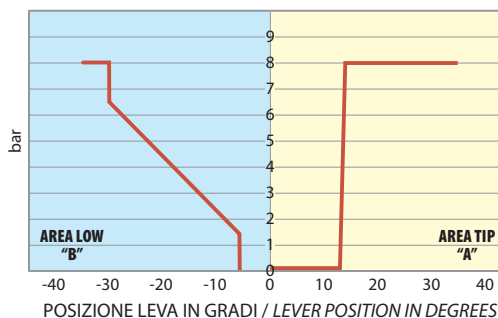
- Distributore pneumatico per comando ON/OFF o proporzionale salita e proporzionale discesa.
- *Pneumatic distributor for ON/OFF or proportional tipping and proportional lowering control.*

DIAGRAMMI / DIAGRAMS

A = CURVA PROPORZIONALE / *PROPORTIONAL CURVE*



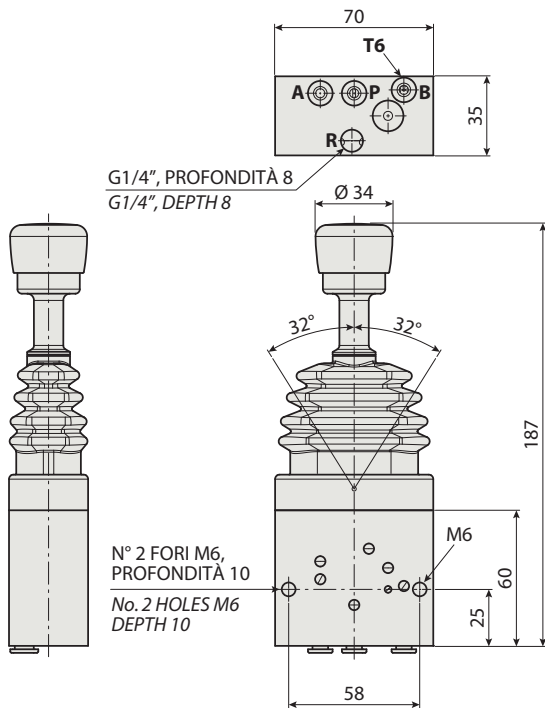
B = CURVA ON/OFF / *ON/OFF CURVE*



CARATTERISTICA CON PRESSIONE DI ALIMENTAZIONE = 8 bar
DIAGRAM REFERRED TO SUPPLY PRESSURE = 8 bar

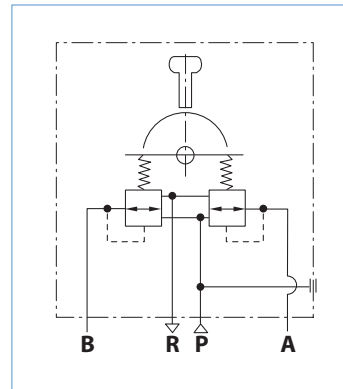
MONOSTABILE - BISTABILE - TRISTABILE
MONOSTABLE - BISTABLE - TRISTABLE

VERSIONE ATTACCHI INFERIORI - RAPIDO T6 - G1/4"
BOTTOM PORTS VERSION - RAPID T6 - G1/4"



ATTACCHI ARIA / AIR PORTS

- P Alimentazione (IN) Ø 6 / Compressed air supply
- B Abbassamento cassone (LOW) Ø 6 / Control lowering
- A Sollevamento cassone (TIP) Ø 6 / Control tipping
- R Scarico (EX) G1/4" / Free exhaust

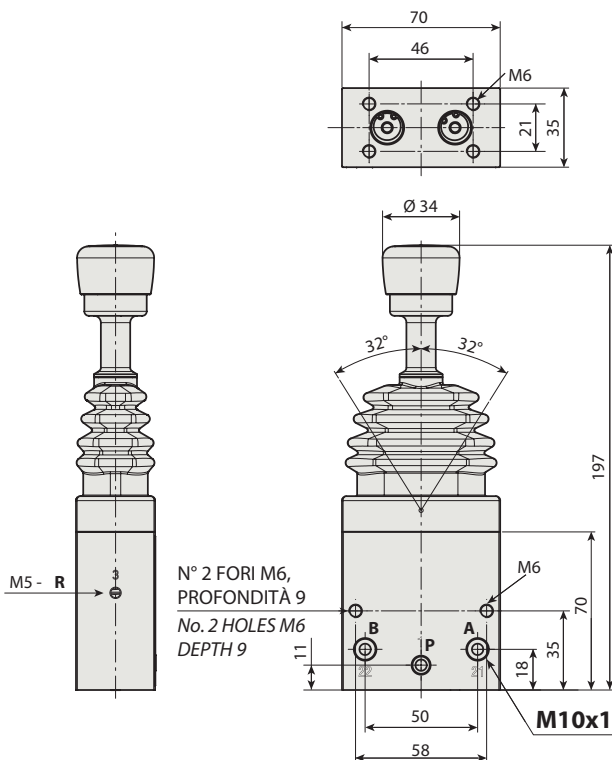


Mod. PM con attacchi inferiori
PM model with bottom ports

Con la versione attacchi INFERIORE, vedere CURVA B (ON/OFF).
With BOTTOM ports version, see CURVE B (ON/OFF).

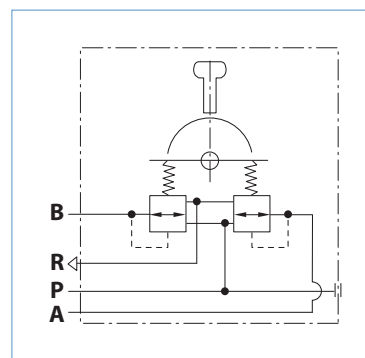
6

VERSIONE ATTACCHI LATERALI - M10X1
SIDE PORTS VERSION - M10X1



ATTACCHI ARIA / AIR PORTS

- P Alimentazione (IN) Ø 6 / Compressed air supply
- B Abbassamento cassone (LOW) Ø 6 / Control lowering
- A Sollevamento cassone (TIP) Ø 6 / Control tipping
- R Scarico (EX) M5 / Free exhaust

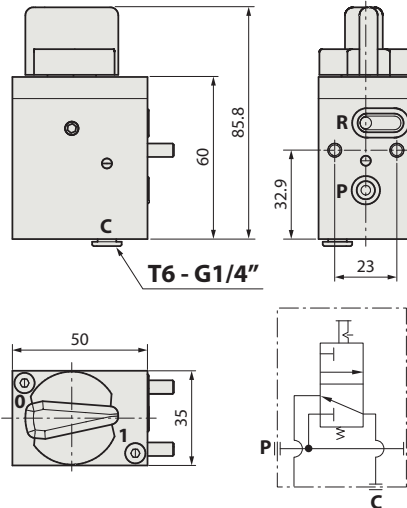
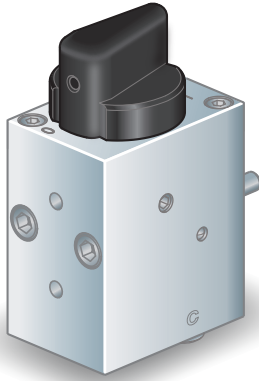


Mod. PM con attacchi laterali
PM model with side ports

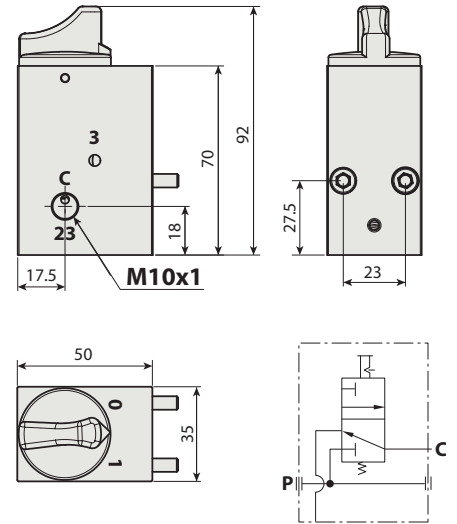
Con la versione attacchi LATERALI, vedere CURVA A (proporzionale).
With SIDE ports version, see CURVE A (proportional).

SEZIONI AUSILIARIE PER COMANDO PNEUMATICO PM AUXILIARY SECTIONS FOR PM PNEUMATIC CONTROL

**KIT COMANDO PTO, VERSIONE ATTACCHI
INFERIORI - RAPIDO T6 - G1/4"**
*PTO CONTROL KIT,
BOTTOM PORTS VERSION - RAPID T6 - G1/4"*
CODICE / CODE **400PMC1BB01**

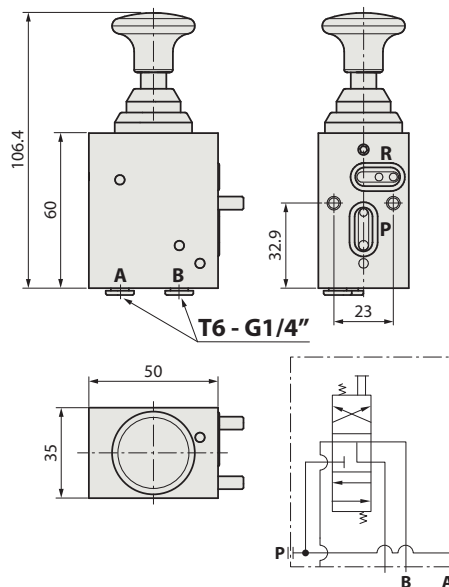
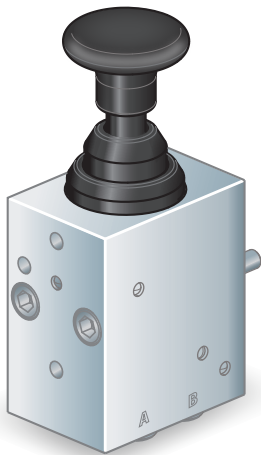


**KIT COMANDO PTO, VERSIONE ATTACCHI
LATERALI - M10X1**
*PTO CONTROL KIT,
SIDE PORTS VERSION - M10x1*
CODICE / CODE **400PM30132L**

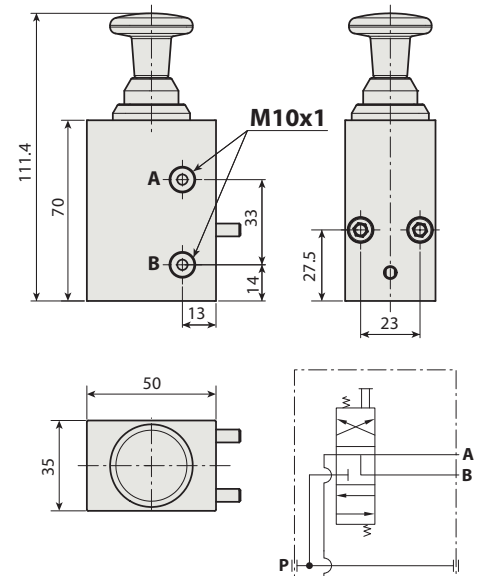


6

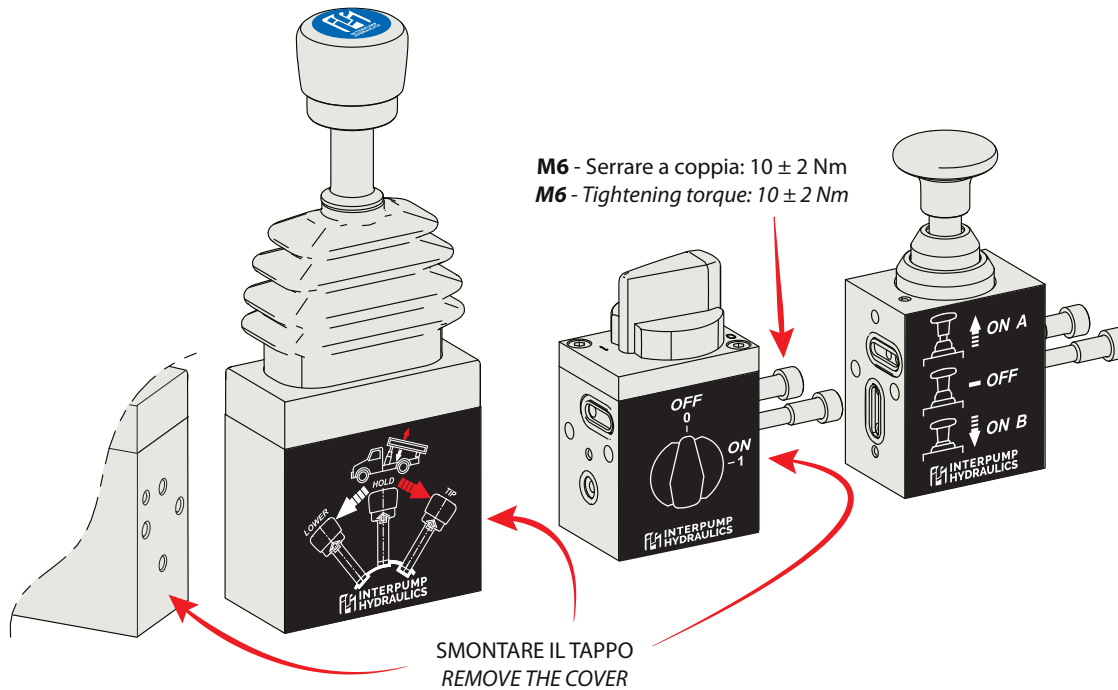
**KIT COMANDO PUSH-PULL MONOSTABILE,
VERSIONE ATTACCHI
INFERIORI - RAPIDO T6 - G1/4"**
*MONOSTABLE PUSH-PULL CONTROL KIT,
BOTTOM PORTS VERSION - RAPID T6 - G1/4"*
CODICE / CODE **400PMC1BB02**



**KIT COMANDO PUSH-PULL MONOSTABILE,
VERSIONE ATTACCHI
LATERALI - M10X1**
*MONOSTABLE PUSH-PULL CONTROL KIT,
SIDE PORTS VERSION - M10x1*
CODICE / CODE **400PM30631L**



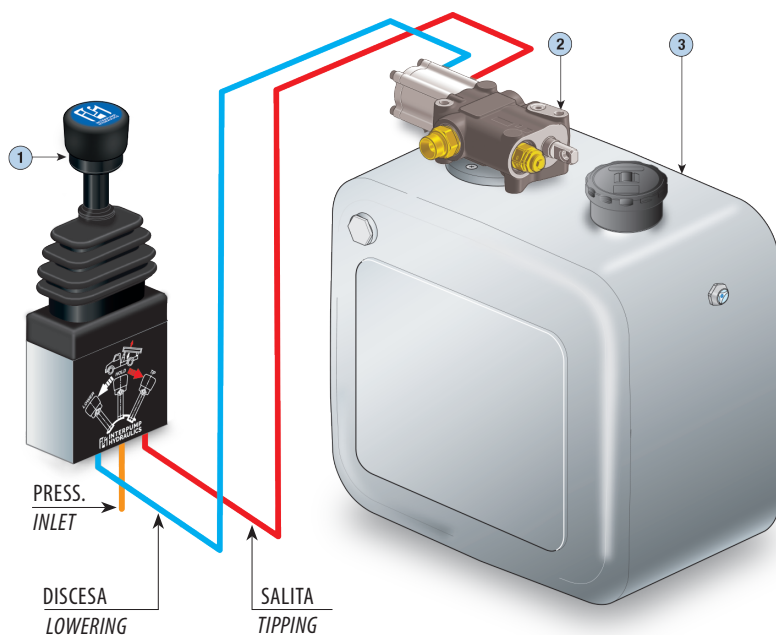
ISTRUZIONI DI MONTAGGIO DELLE SEZIONI AGGIUNTIVE
MOUNTING INSTRUCTIONS FOR AUXILIARY SECTIONS



6

ESEMPIO SCHEMA DI MONTAGGIO / EXAMPLE OF HOOK-UP

ESEMPIO DI MONTAGGIO / EXAMPLE OF MOUNTING



1 | COMANDO PNEUMATICO
PNEUMATIC CONTROL

2 | DISTRIBUTORE
DISTRIBUTOR

3 | SERBATOIO OLIO
OIL TANK

