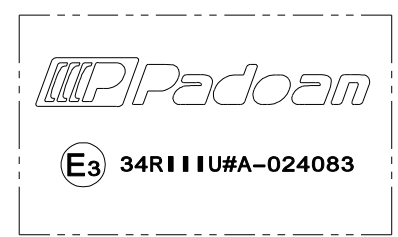


Tank composition		
Pos.	Denomination	Q.ty
1	FILLING CAP	1
2	LEVEL INDICATOR VDO TYPE CONNECTION	1
3	DIESEL DRAINAGE	1
4	PARTITION	1
5	SUPPORT 44/54	2
6	STRAP	2
7	GROUND CONNECTION	1

MARK DETAIL



Tank dimension	0	EMISSION	06/12/2016	MM	MM	EB
	Rev.	Modify description	Date	Dis.	Ver.	App.
Full capacity 255 Lt	Part name :	Diesel oil tank 250 LT Al/Steel/Stainl.steel fam. 440x540				General tolerances: ISO 2768 V
Support weight 20 Kg	Part code :	Replace the	Material code			
Tank weight (F,I,T) kg (A) kg	Scale	1:10	Replaced by	(X)=F:Steel DC03A EN 10130		
Dimensions 1200x440x540 mm			(X)=I:Stainless steel AISI 304 UNI EN 10088		Drawing format A3	
				(X)=T:Text stain.steel AISI 304 UNI EN 10088		
				(X)=A:Aluminium EN AW 5754		
				OWNERSHIP OF THIS DRAWING IS RESERVED BY LAW		
				AND MAY NOT REPRODUCED IN WHOLE OR IN PART		
				WITHOUT PERMISSION OF PADOAN S.R.L.		
				DO NOT MAKE MEASUREMENTS ON DRAWING		
				DO NOT CHANGE WITHOUT TECHNICAL OFFICE		
				AUTHORIZATION		

