

# SERIE DP 16 3.3.1.041.

CODICE DI ORDINAZIONE - DECODING  
3.3.1.041 . XX . XX . 0

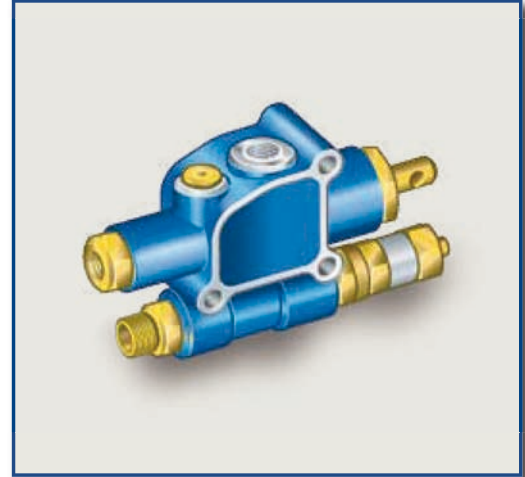
DP 16/20  
DP 16/24

TARATURA VALVOLA MASSIMA PRESSIONE  
PRESSURE RELIEF VALVE SETTING  
10÷35 MPa (100÷350 bar)

- 20 = COMANDO PNEUMATICO CON FINE CORSA  
PNEUMATICAL CONTROL WITH END-OF-STROKE
- 24 = COMANDO MECCANICO CON FINE CORSA  
MECHANICAL CONTROL WITH END-OF-STROKE

CODICE BASE/BASIC CODE

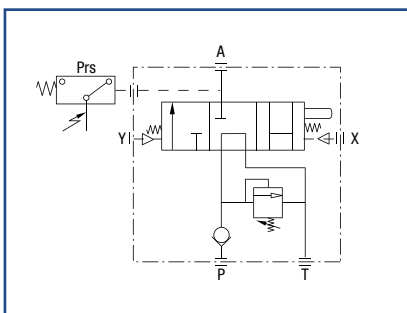
## Distributore Idraulico Tipping Valve



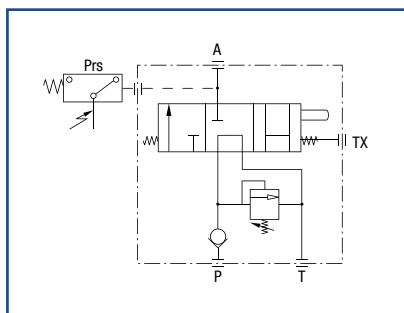
### CARATTERISTICHE TECNICHE - TECHNICAL SPECIFICATIONS

Portata nominale Flow rate	40 l/min	Temperatura fluido °C (t) Fluid temperature °C (t)	-25° + 80°C
Pressione massima di lavoro Max working pressure	300 bar	Campo viscosità Viscosity range	12-100 cSt
Pressione massima di picco (<0.1 s) Max peak pressure	450 bar	Filtrazione/Filtering ISO 4406 βx=75	20/17 25 μm
Pressione massima sul T T port max pressure	30 bar	Peso Weight	2 kg
Fluido olio minerale Mineral oil	ISO VG 46	Pressione pneumatica di lavoro Pneumatic working pressure	5 - 10 bar

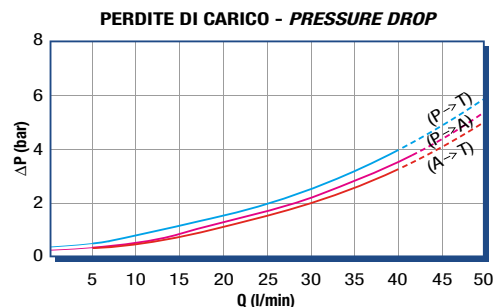
- > **DP 16/20** distributore da 40 l/min a comando pneumatico per veicoli ribaltabili con sola motrice.
- > **DP 16/24** distributore da 40 l/min a comando meccanico (a cavo) per veicoli ribaltabili con sola motrice.
- > Consente la **salita** e la **discesa** veloce.
- > In posizione di riposo la mandata ricircola a serbatoio e l'utenza **A** è chiusa.
- > **Ricentraggio a molla.**
- > Sono incorporate le **valvole di ritegno** e **controllo pressione** in **P**.
- > Disponibile con o senza **tirante per fine corsa**.
- > Flangiabile a **serbatoio** o a **telaio**.
- > Attacco per **pressostato**.
- > **DP 16/20** *pneumatical 40 l/min distributor for tipping vehicles with tractor only.*
- > **DP 16/24** *mechanical (operated through cable) 40 l/min distributor for tipping vehicles with tractor only.*
- > *It allows **tipping** and fast **lowering**.*
- > *In neutral position the oil outlet is open to oil tank and the port **A** is closed.*
- > **Recentering through spring.**
- > **Port P check** and adjustable **relief valves** are included.
- > *With or without **end-of-stroke rope**.*
- > *Flange connection to **tank** or **chassis** is available.*
- > **Pressure switch gauge.**



Mod. DP 16/20

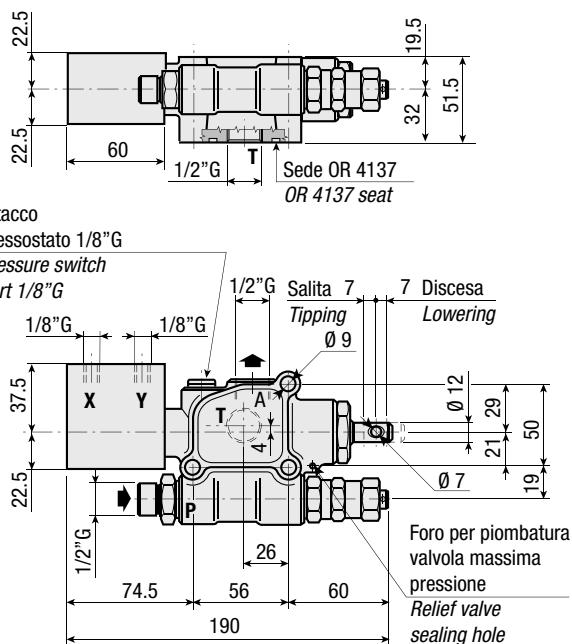
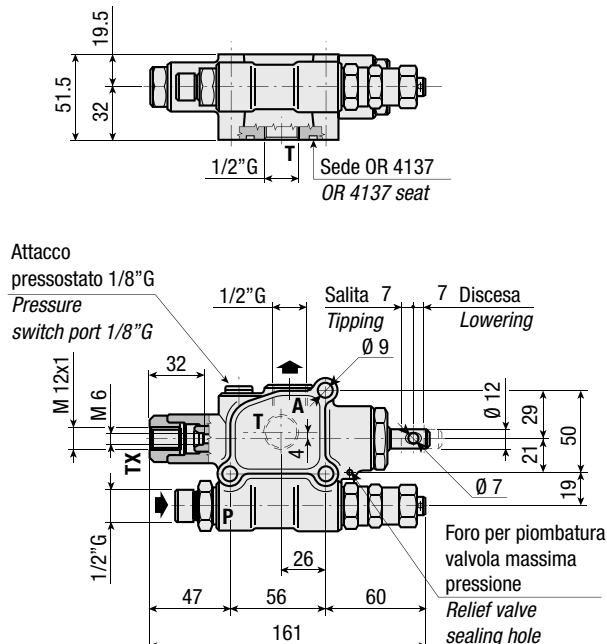


Mod. DP 16/24



RILIEVI ESEGUITI CON OLIO ISO VG 46 A 50° C (√=30 cSt)

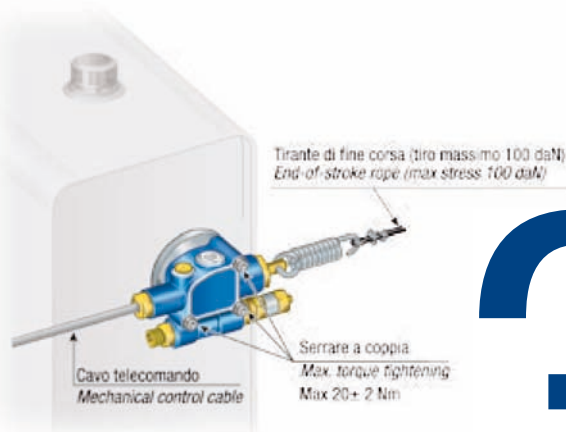
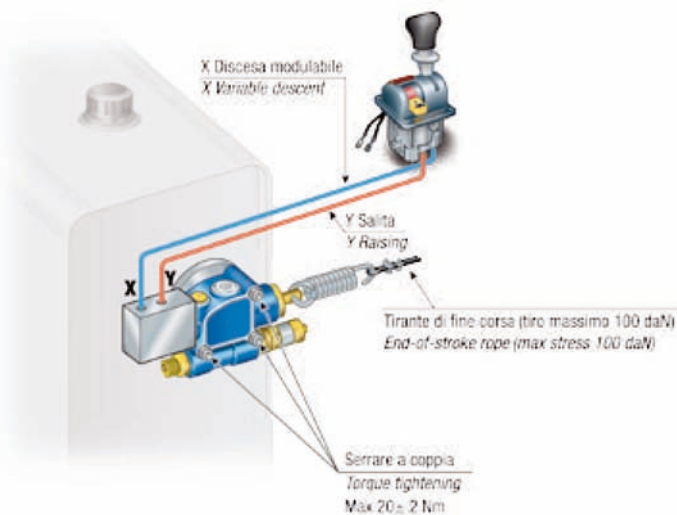
THE ABOVE SPECIFICATIONS REFER TO OIL TYPE ISO VG 46 AT 50° C (√=30 cSt)

**VERSIONE PNEUMATICA - PNEUMATICAL VERSION Mod. DP 16/20**

**VERSIONE MECCANICA - MECHANICAL VERSION Mod. DP 16/24**

**SERIE DP 16 3.3.1.041.**

DESCRIZIONE - DESCRIPTION	CODICE - CODE
Pressostato - Pressure switch	0.99.00.024.000

**KIT PER FISSAGGIO AL SERBATOIO - STUD KIT FOR TANK MOUNTING**

DESCRIZIONE - DESCRIPTION	CODICE - CODE
Per serbatoio sotto-cassone - For underbody tank	2.05.638.00000

**DP 16/20**
**DP 16/24**


DISTRIBUTORI IDRAULICI TIPPING VALVES