

4

RUBINETTI A SFERA AAP - ESEMPIO DI ORDINAZIONE  
BALL VALVES AAP - PART NUMBER EXAMPLE

6

RUBINETTI A SFERA AAP-2V  
BALL VALVES AAP-2V

8

RUBINETTI A SFERA AAP-3V  
BALL VALVES AAP-3V

10

DEVIATORI OLEODINAMICI - ESEMPIO DI ORDINAZIONE  
HYDRAULIC DEVIATORS - PART NUMBER EXAMPLE

12

DEVIATORE A TRE VIE  
3-WAY DIVERTER

13

DEVIATORE A QUATTRO VIE  
4-WAY DIVERTER

14

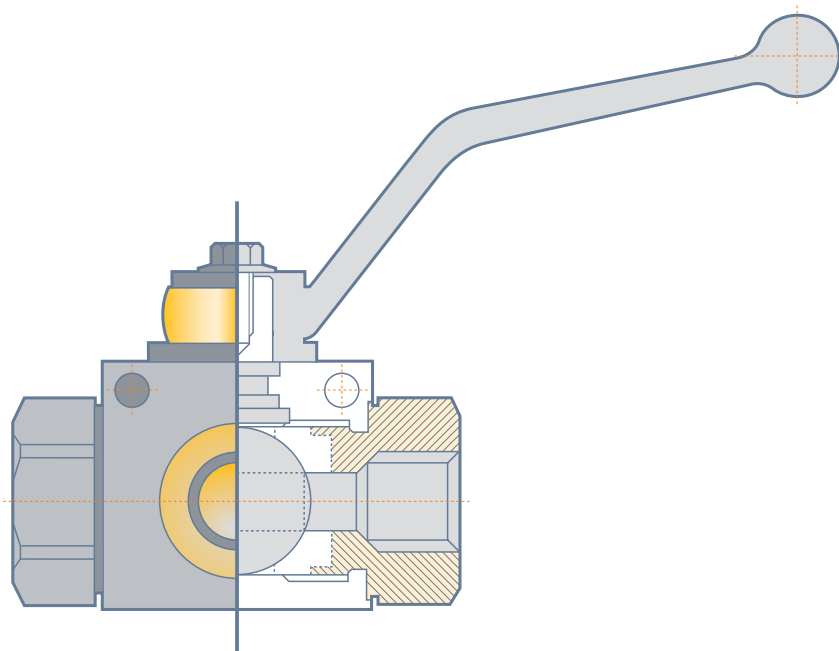
DEVIATORE A SEI VIE  
6-WAY DIVERTER

15

DEVIATORE A OTTO VIE  
8-WAY DIVERTER

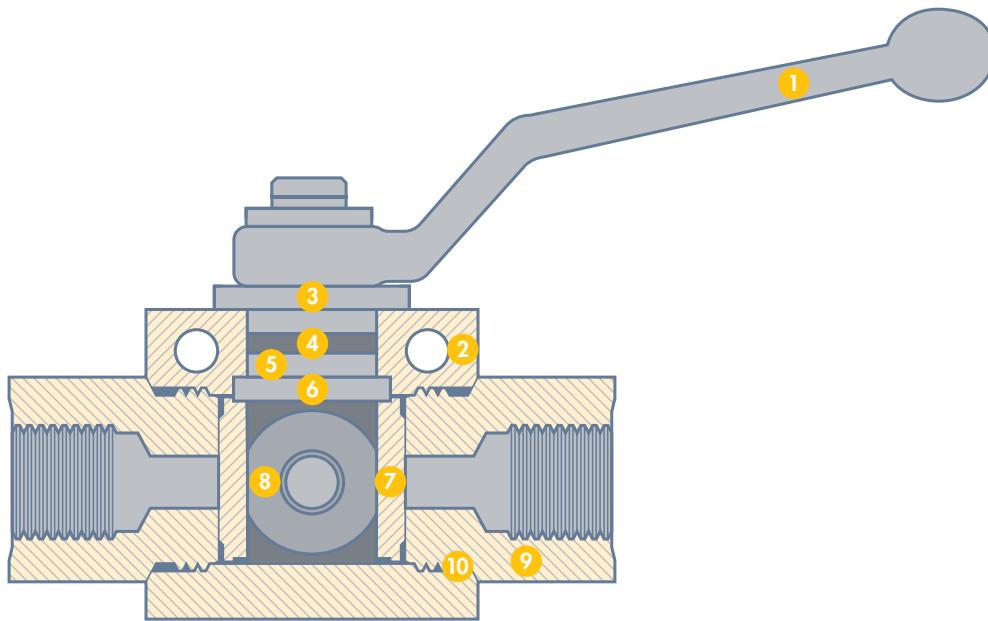


## BALL VALVES AAP



### ESEMPIO DI ORDINAZIONE EXAMPLE ORDER

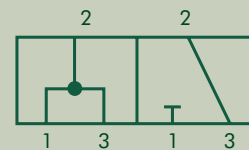
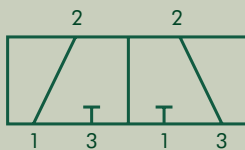
<b>AAP-2V</b>	<b>RUBINETTO VALVE</b>									
<b>R</b>	<b>ATTACCO CONNECTOR</b>									
<b>38</b>	<b>TIPO - FILETTATURA TYPE - THREADED</b>									
<b>OL</b>	<b>CAMPO D'IMPIEGO USE</b>									
<b>AAP-2V</b>	<b>RUBINETTO VALVE</b>									
	<b>AAP-2V</b>	Rubinetto a sfera a due vie Two way ball valve	<b>AAP-3V</b>	Rubinetto a sfera a tre vie Three way ball valve						
<b>R</b>	<b>ATTACCO CONNECTOR</b>									
	<b>R</b>	Attacco femmina gas DIN-2999 Female gas connector DIN-2999	<b>NPTF</b>	Attacco femmina NPTF Female connector NPTF	<b>CEL</b>	Terminale maschio DIN-2353 L Male end DIN 2353 L	<b>CES</b>	Terminale maschio DIN-2353 S Male end DIN 2353 S		
<b>38</b>	<b>TIPO - FILETTATURA TYPE - THREAD</b>									
		<b>18</b>	<b>14</b>	<b>38</b>	<b>12</b>	<b>34</b>	<b>100</b>	<b>114</b>	<b>112</b>	
	<b>AAP-2V</b>	1/8"	1/4"	3/8"	1/2"	3/4"	1"	1.1/4"	1.1/2"	
	<b>AAP-3V</b>	1/8"	1/4"	3/8"	1/2"	3/4"	1"	1.1/4"	1.1/2"	
<b>OL</b>	<b>CAMPO D'IMPIEGO USE</b>									
			<b>OL (standard)</b>	<b>LC</b>	<b>FC</b>					
	<b>Applicazione Application</b>	Oleodinamica Hydraulic		Fluidi leggermente corrosivi Slightly corrosive fluids			Fluidi corrosivi Corrosive fluids			
	<b>Corpo Housing</b>	Acciaio Steel		Acciaio Steel			Acciaio inox Stainless steel			
	<b>Stelo di comando Control rod</b>	Acciaio cromato Chromium plated steel		Acciaio cromato Chromium plated steel			Acciaio inox Stainless steel			
	<b>Sfera Ball valve</b>	Acciaio cromato Chromium plated steel		Acciaio cromato Chromium plated steel			Acciaio inox Stainless steel			
	<b>Guarnizione sfera Ball valve gasket</b>	Poliamide Polyamides		PTFE PTFE			PTFE PTFE			
	<b>Guarnizione stelo Rod gasket</b>	Perbunan Perbunan		Viton Viton			PTFE PTFE			
	<b>Pressione nominale Nominal pressure</b>	100 bar		100 bar			100 bar			
	<b>Temperatura Temperature</b>	- 20 °C + 100 °C		- 20 °C + 100 °C			- 40 °C + 250 °C			



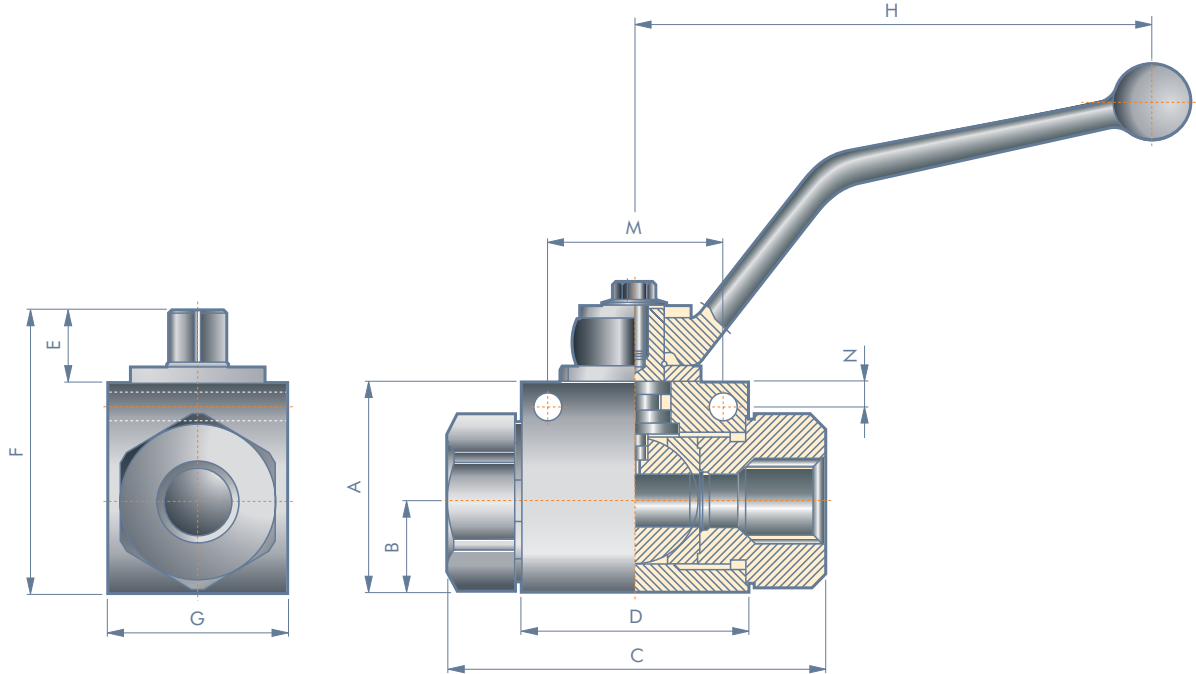
- |   |  |   |  |    |  |
|---|--|---|--|----|--|
| 1 | Leva lega leggera<br>Light alloy lever                           | 5 | Anello scorrevole<br>Sliding ring      | 8  | Sfera in acciaio cromato duro<br>Hard chromium plated steel ball valve |
| 2 | Corpo acciaio laminato e nichelato<br>Nickel plated steel casing | 6 | Stello di comando<br>Control rod       | 9  | Raccordo attacco in acciaio<br>Steel connector fittings                |
| 3 | Disco di arresto<br>Stopping disk                                | 7 | Guarnizione sfera<br>Ball valve gasket | 10 | Guarnizione di tenuta<br>Seal  |
| 4 | Guarnizione stello<br>Rod gasket                                 |   |  |    |  |



### SIMBOLI OLEODINAMICI STANDARD GRAPHICAL SYMBOL

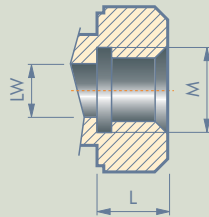


BALL VALVES AAP-2V

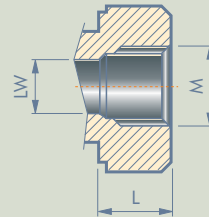


ATTACCHI A RICHIESTA CONNECTORS SUPPLIED ON REQUEST

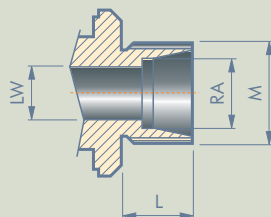
**R**  
Attacco femmina gas  
Female gas connector



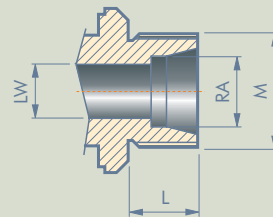
**NPTF**  
Attacco femmina  
Female connector



**CEL**  
Terminale maschio DIN 2353 leggero  
Light male terminal DIN 2353



**CES**  
Terminale maschio DIN 2353 pesante  
Heavy male terminal DIN 2353



### ATTACCO FEMMINA GAS R FEMALE GAS CONNECTOR R

TIPO TYPE	PN (bar)	DN	A	B	C	D	E	F	G	H	SW	M	N	LW
APP-2V*1/8"	500	4	35	14	71	42	11	49	30	100	9	25	5.75	5.5
APP-2V*1/4"	500	6	35	14	71	42	11	49	30	100	9	25	5.75	5.5
APP-2V*3/8"	500	10	40	17	72.5	44	11	54	35	100	9	31	5.75	5.5
APP-2V*1/2"	500	13	43	18	83	48	11	57	37	100	9	34	6.25	6.5
APP-2V*3/4"	400	20	55	23.5	95	62	13	73.5	45	170	14	46	6.25	8.5
APP-2V*1"	350	25	65	29	112	66.3	13	82.5	55	170	14	49	6.25	8.5
APP-2V*1"1/4	350	25	65	29	120	66.3	13	82.5	55	170	14	49	6.25	8.5
APP-2V*1"1/2	350	25	65	29	124	66.3	13	82.5	55	170	14	54	6.25	8.5

### ATTACCO FEMMINA NPTF FEMALE CONNECTOR NPTF

TIPO TYPE	PN (psi)	DN	A	B	C	D	E	F	G	H	L	M	SW	LW
APP-2V*1/8"	7250	4	35	14	71	42	11	49	30	110	11	N1/8	9	4
APP-2V*1/4"	7250	6	35	14	71	42	11	49	30	110	16	N1/4	9	6
APP-2V*3/8"	7250	10	40	17	73	44	11	54	35	110	16	N3/8	9	10
APP-2V*1/2"	7250	13	43	18	83	48	11	57	37	110	17	N1/2	9	13
APP-2V*3/4"	5800	20	55	23	95	62	13	73	45	180	21	N3/4	14	20
APP-2V*1"	5075	25	65	29	113	66	13	83	55	180	24	N1"	14	25
APP-2V*1"1/4	5075	25	65	29	121	66	13	83	55	180	24	N1"1/4	14	25
APP-2V*1"1/2	5075	25	65	29	124	66	13	83	55	180	24	N1"1/2	14	25

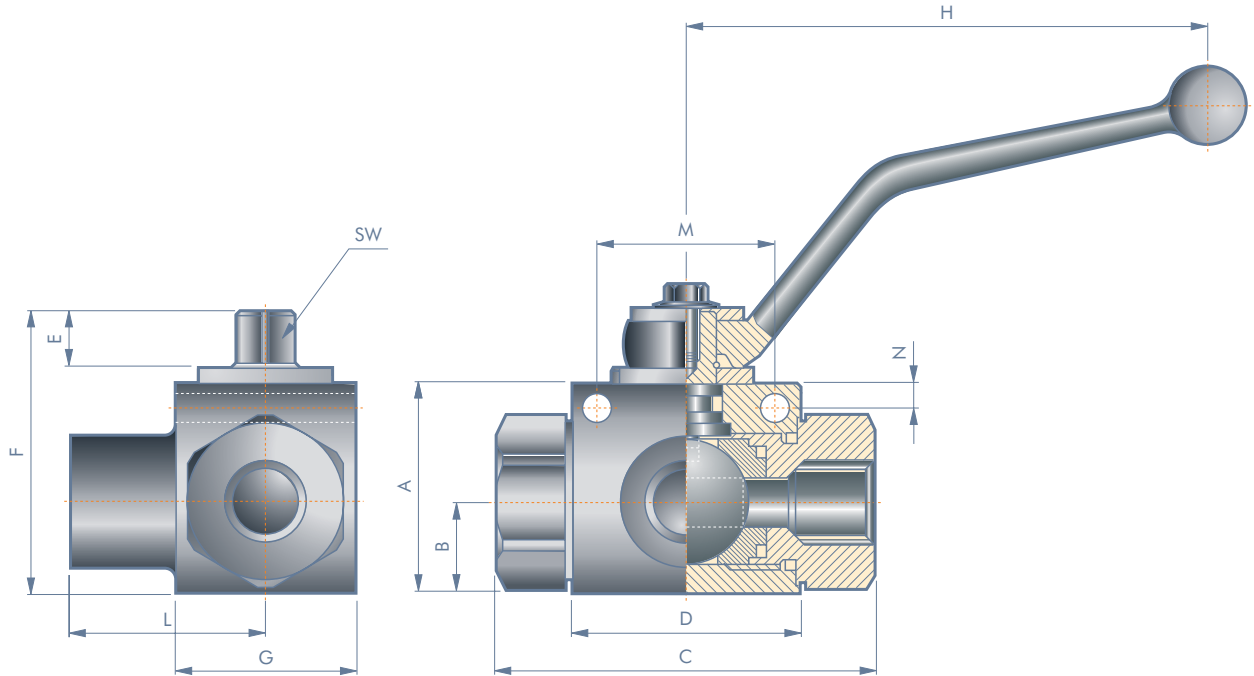
### TERMINALE MASCHIO DIN 2353 LEGGERO CEL LIGHT MALE TERMINAL DIN 2353 CEL

TIPO TYPE	PN (bar)	DN	A	B	C	D	E	F	G	H	L	M	SW	RA
APP-2V*6L	500	6	35	14	76	42	11	49	30	110	10	12x1.5	9	6
APP-2V*8L	500	6	35	14	76	42	11	49	30	110	10	14x1.5	9	8
APP-2V*10L	500	6	35	14	76	42	11	49	30	110	11	16x1.5	9	10
APP-2V*10L	500	10	40	17	76	44	11	54	35	110	11	16x1.5	9	10
APP-2V*12L	500	10	40	17	77	44	11	54	35	110	11	18x1.5	9	12
APP-2V*15L	500	13	43	18	86	48	11	57	37	110	12	22x1.5	9	15
APP-2V*18L	500	13	43	18	86	48	11	57	37	110	12	26x1.5	9	18
APP-2V*22L	400	20	55	23	108	62	13	73	45	180	14	30x2	14	22
APP-2V*28L	350	25	65	29	115	66	13	83	55	180	14	36x2	14	28
APP-2V*35L	350	25	65	29	115	66	13	83	55	180	16	45x2	14	35
APP-2V*42L	350	25	65	29	115	66	13	83	55	180	16	52x2	14	35

### TERMINALE MASCHIO DIN 2353 PESANTE CES HEAVY MALE TERMINAL DIN 2353 CES

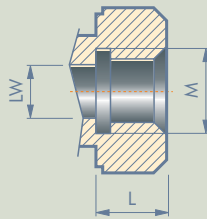
TIPO TYPE	PN (bar)	DN	A	B	C	D	E	F	G	H	L	M	SW	RA
APP-2V*8S	500	4	35	14	76	42	11	49	30	110	12	16x1.5	9	8
APP-2V*10S	500	6	35	14	76	42	11	49	30	110	12	18x1.5	9	10
APP-2V*12S	500	8	35	14	76	42	11	49	30	110	12	20x1.5	9	12
APP-2V*12S	500	10	40	17	76	44	11	54	35	110	12	20x1.5	9	12
APP-2V*14S	500	10	40	17	82	44	11	54	35	110	14	22x1.5	9	14
APP-2V*16S	500	13	43	18	89	48	11	57	37	110	14	24x1.5	9	16
APP-2V*20S	500	13	43	18	93	48	11	57	37	110	16	30x2	9	20
APP-2V*25S	400	20	55	23	111	62	13	73	45	180	18	36x2	14	25
APP-2V*30S	350	25	65	29	125	66	13	83	55	180	20	42x2	14	30
APP-2V*38S	350	25	65	29	132	66	13	83	55	180	22	52x2	14	38

**BALL VALVES AAP-3V**

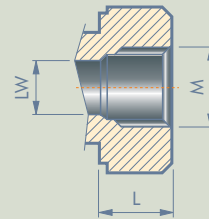


**ATTACCHI A RICHIESTA CONNECTORS SUPPLIED ON REQUEST**

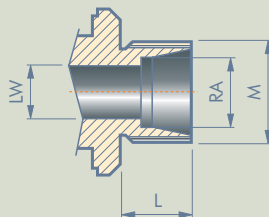
**R**  
Attacco femmina gas  
Female gas connector



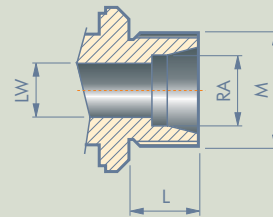
**NPTF**  
Attacco femmina  
Female connector



**CEL**  
Terminale maschio DIN 2353 leggero  
Light male terminal DIN 2353



**CES**  
Terminale maschio DIN 2353 pesante  
Heavy male terminal DIN 2353



### ATTACCO FEMMINA GAS R FEMALE GAS CONNECTOR R

TIPO TYPE	PN (bar)	DN	A	B	C	D	E	F	G	H	L	SW	M	N	LW
APP-3V*1/8"	400	4	35	14	71	42	11	49	30	110	33.5	9	25	5.75	5.5
APP-3V*1/4"	400	6	35	14	71	42	11	49	30	110	33.5	9	25	5.75	5.5
APP-3V*3/8"	400	10	40	17	73	44	11	54	35	110	37	9	31	5.75	5.5
APP-3V*1/2"	350	13	43	18	83	48	11	57	37	110	40	9	34	6.25	6.5
APP-3V*3/4"	350	20	55	23	95	62	13	73	45	180	52	14	46	6.25	8.5
APP-3V*1"	350	25	65	29	113	66	13	83	55	180	60	14	49	6.25	8.5
APP-3V*1"1/4	350	25	65	29	121	66	13	83	55	180	61.5	14	49	6.25	8.5

### ATTACCO FEMMINA NPTF FEMALE CONNECTOR NPTF

TIPO TYPE	PN (psi)	DN	A	B	C	D	E	F	G	H	I	L	M	SW	LW
APP-3V*1/8"	7250	4	35	14	71	42	11	49	30	110	33.5	16	N1/8	9	4
APP-3V*1/4"	7250	6	35	14	71	42	11	49	30	110	33.5	16	N1/4	9	6
APP-3V*3/8"	7250	10	40	17	73	44	11	54	35	110	37	16	N3/8	9	10
APP-3V*1/2"	7250	13	43	18	83	48	11	57	37	110	40	17	N1/2	9	13
APP-3V*3/4"	5800	20	55	23	95	62	13	73	45	180	52	21	N3/4	14	20
APP-3V*1"	5075	25	65	29	113	66	13	83	55	180	60	24	N1"	14	25
APP-3V*1"1/4	5075	25	65	29	121	66	13	83	55	180	61.5	24	N1"1/4	14	25
APP-3V*1"1/2	5075	25	65	29	124	66	13	83	55	180	61.5	24	N1"1/2	14	25

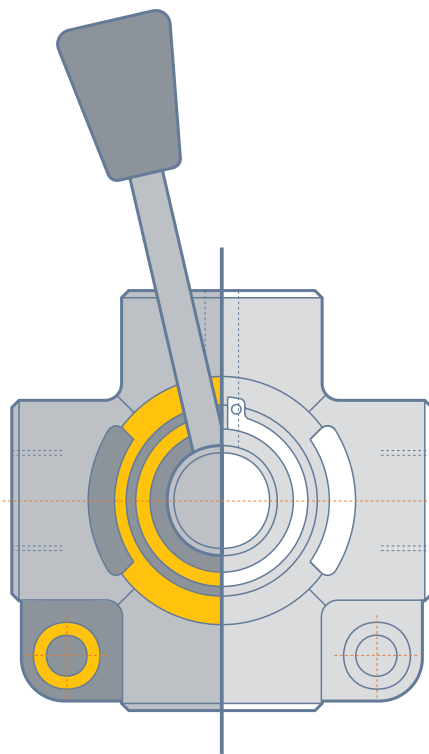
### TERMINALE MASCHIO DIN 2353 LEGGERO CEL LIGHT MALE TERMINAL DIN 2353 CEL

TIPO TYPE	PN (bar)	DN	A	B	C	D	E	F	G	H	I	L	M	SW	LW
APP-3V*6L	400	6	35	14	76	42	11	49	30	110	36	10	12x1.5	9	4
APP-3V*8L	400	6	35	14	76	42	11	49	30	110	36	10	14x1.5	9	4
APP-3V*10L	400	6	35	14	76	42	11	49	30	110	36	11	16x1.5	9	6
APP-3V*12L	400	10	40	17	78	44	11	54	35	110	41	11	18x1.5	9	10
APP-3V*15L	350	13	43	18	88	48	11	57	37	110	44	12	22x1.5	9	13
APP-3V*18L	350	13	43	18	88	48	11	57	37	110	44	12	26x1.5	9	13
APP-3V*22L	350	20	55	23	100	62	13	73	45	180	57	14	30x2	14	20
APP-3V*28L	350	25	65	29	119	66	13	83	55	180	64	14	36x2	14	25
APP-3V*35L	350	25	65	29	128	66	13	83	55	180	66	16	45x2	14	25

### TERMINALE MASCHIO DIN 2353 PESANTE CES HEAVY MALE TERMINAL DIN 2353 CES

TIPO TYPE	PN (bar)	DN	A	B	C	D	E	F	G	H	I	L	M	SW	LW
APP-3V*10S	400	6	35	14	76	42	11	49	30	110	36	12	18x1.5	9	4
APP-3V*12S	400	8	35	14	76	42	11	49	30	110	36	12	20x1.5	9	6
APP-3V*14S	400	10	40	17	78	44	11	54	35	110	41	14	22x1.5	9	10
APP-3V*16S	350	13	43	18	88	48	11	57	37	110	44	14	24x1.5	9	13
APP-3V*20S	350	13	43	18	88	48	11	57	37	110	44	16	30x2	9	13
APP-3V*25S	350	20	55	23	100	62	13	73	45	180	57	18	36x2	14	20
APP-3V*30S	350	25	65	29	119	66	13	83	55	180	64	20	42x2	14	25
APP-3V*38S	350	25	65	29	128	66	13	83	55	180	66	22	52x2	14	25

## HYDRAULIC DEVIATORS DV



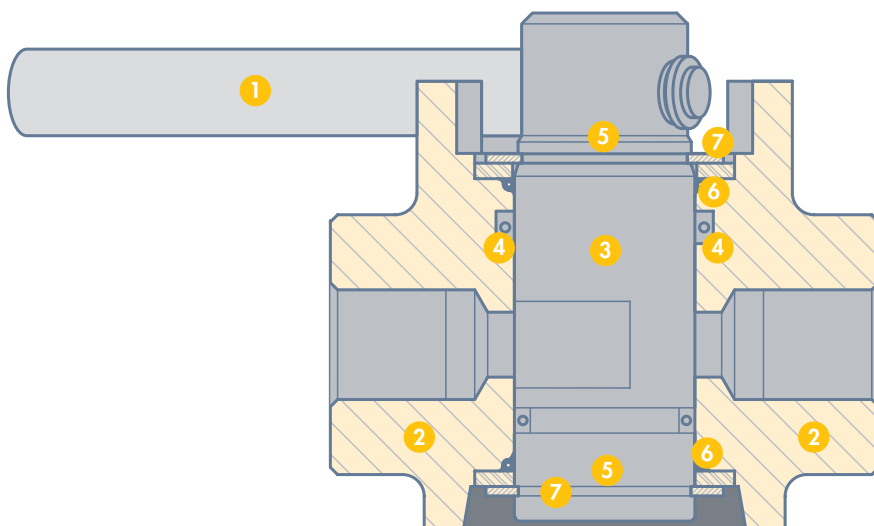
2005

### ESEMPIO DI ORDINAZIONE EXAMPLE ORDER

<b>D3V</b>	<b>DEVIATORI DIVERTER</b>				
	<b>RT</b>	<b>ATTACCO FEMMINA FEMALE CONNECTOR</b>			
		<b>TIPO - FILETTATURA TYPE - THREAD</b>			
		<b>VERSIONE CENTRI CENTERS VERSION</b>			
		<b>PRESSIONE MASSIMA MAX PRESSURE</b>			
<b>D3V</b>	<b>DEVIATORI DEVIATOR</b>				
	<b>D3V</b> Deviatori a tre vie Three way diverter	<b>D6V</b> Deviatori a sei vie Six way diverter			
	<b>D4V</b> Deviatori a quattro vie Four way diverter	<b>D8V</b> Deviatori a otto vie Eight way diverter			
<b>RT</b>	<b>ATTACCO FEMMINA FEMALE CONNECTOR</b>				
	<b>RT</b> Attacco femmina gas DIN-2999 Female gas connector DIN-2999	<b>NPTF</b> Attacco femmina NPTF Female connector NPTF			
<b>3.8</b>	<b>TIPO - FILETTATURA TYPE - THREAD</b>				
		<b>38</b>	<b>12</b>	<b>34</b>	<b>100</b>
	<b>D3V</b>	3/8"	1/2"	3/4"	1"
	<b>D4V</b>	3/8"	1/2"		
	<b>D6V</b>	3/8"	1/2"	3/4"	1"
<b>D8V</b>	3/8"	1/2"			
<b>C</b>	<b>VERSIONE CENTRI CENTERS VERSION</b>				
	<b>O</b> Versione centri aperti (STD) Open centers version (STD)	<b>C</b> Versione centri chiusi) Closed centers version			
	<b>PRESSIONE MASSIMA MAX PRESSURE</b>				
	250 bar (standard)			<b>AP</b> 330 bar	







1 Leva  
Lever

2 Corpo in ghisa  
Cast iron casing

3 Stelo di comando  
Control rod

4 Guarnizioni di tenuta  
Seals

5 Guarnizioni protezione  
agenti esterni  
Protection external  
agent seals

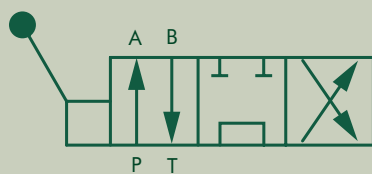
6 Rondella  
Wascher

7 Anello  
Seeger split ring

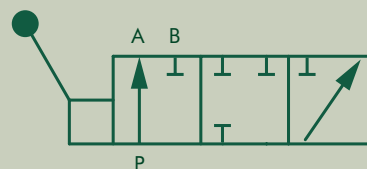
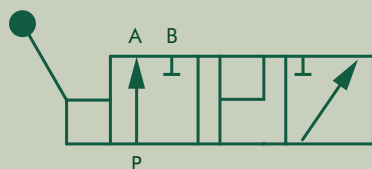
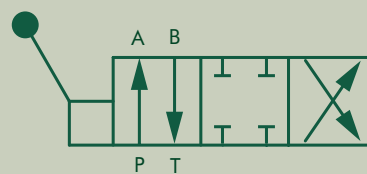


### SIMBOLI OLEODINAMICI STANDARD GRAPHICAL SYMBOL

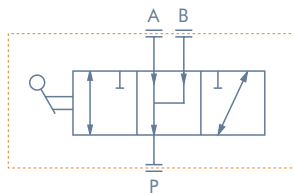
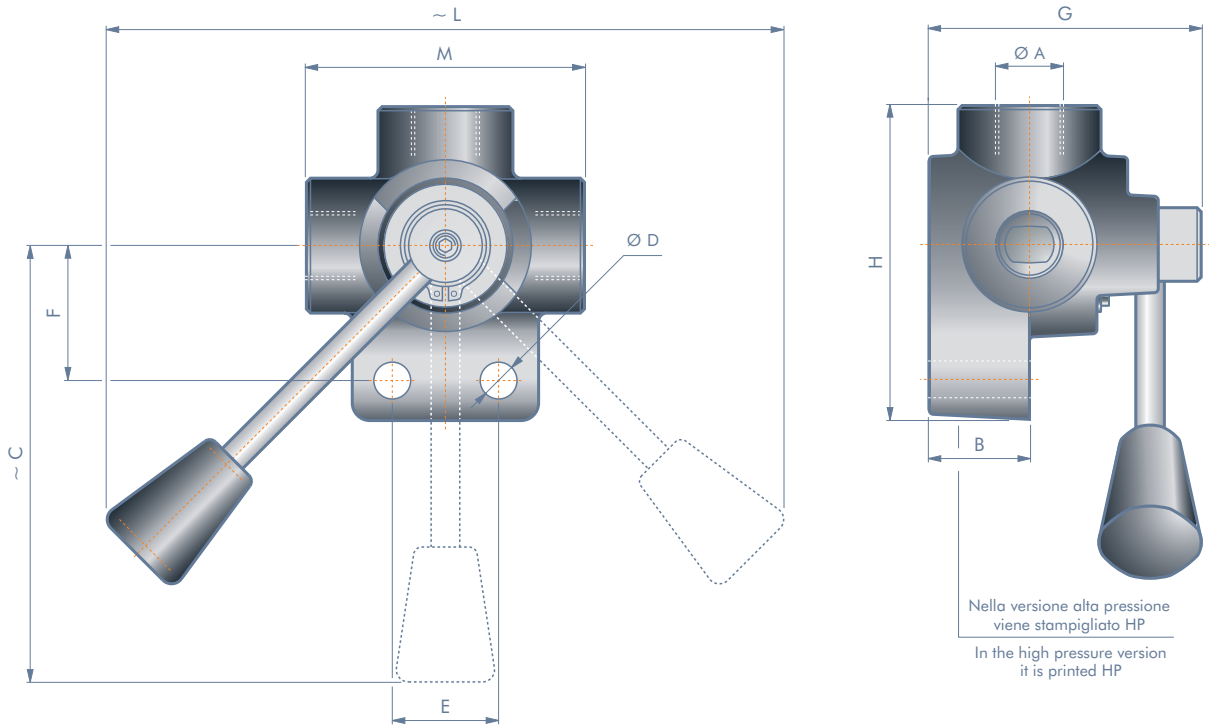
Standard



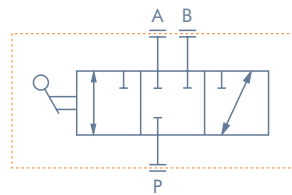
A richiesta  
On request



## 3-WAY DIVERTER



Standard (centro aperto)  
Standard (open centre)

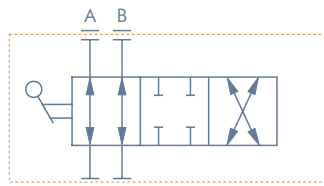
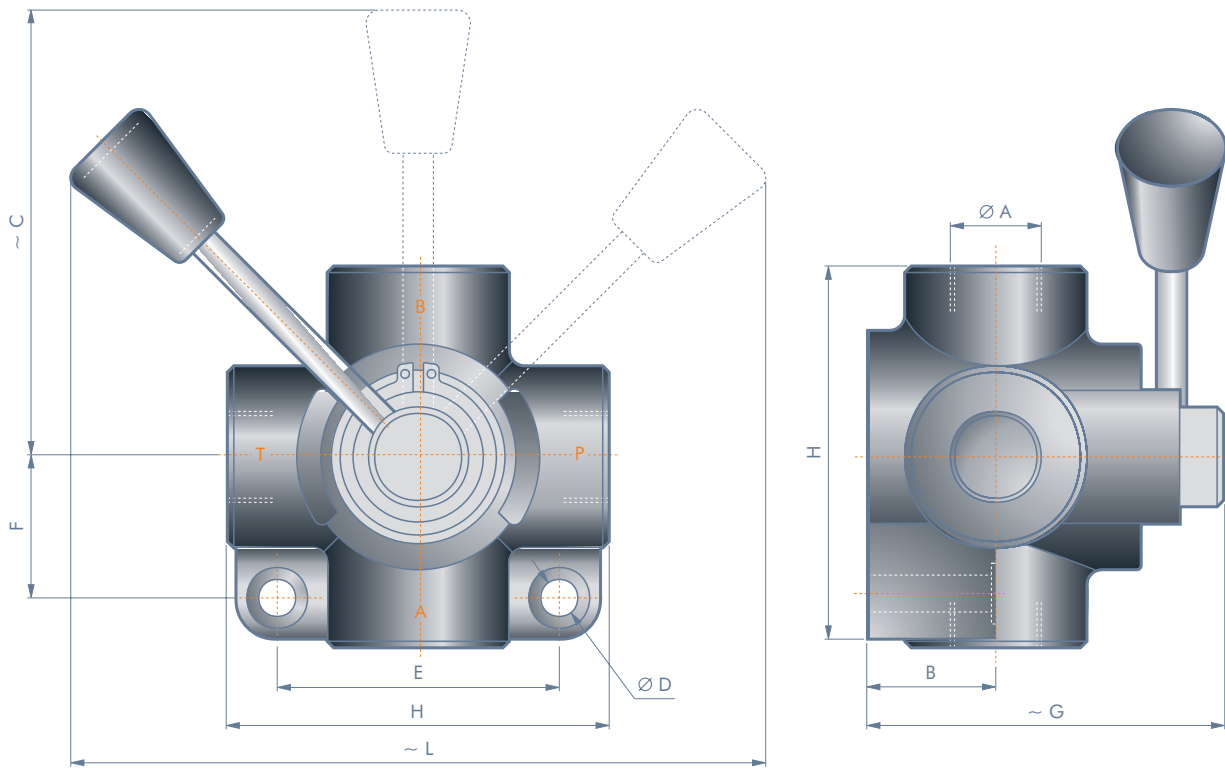


A richiesta (centro chiuso)  
By request (closed centre)

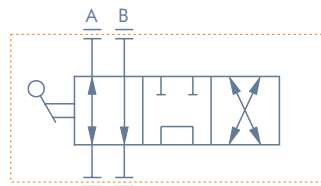
TIPO TYPE	PRESSIONE PRESSURE bar	PORTATA CAPACITY l/min	Ø A	B	C	Ø D	E	F	G	H	L	M
3V-3/8" G	250	30	3/8" G	25	105	8.5	26	33	67	76	165	68
3V-3/8" G AP	330											
3V-1/2" G	250	55	1/2" G	28	105	8.5	32	36	70	87	165	80
3V-1/2" G AP	330											
3V-3/4" G	250	100	3/4" G	30	105	11.0	32	42	78	103	165	94
3V-3/4" G AP	330											

# \*DEVIATORE A QUATTRO VIE

## 4-WAY DIVERTER



Standard (centro chiuso)  
Standard (closed centre)



A richiesta (centro aperto)  
By request (open centre)

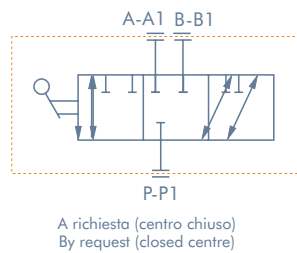
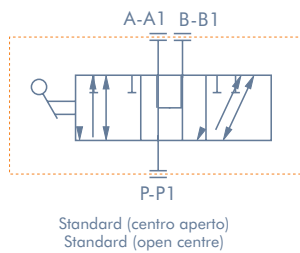
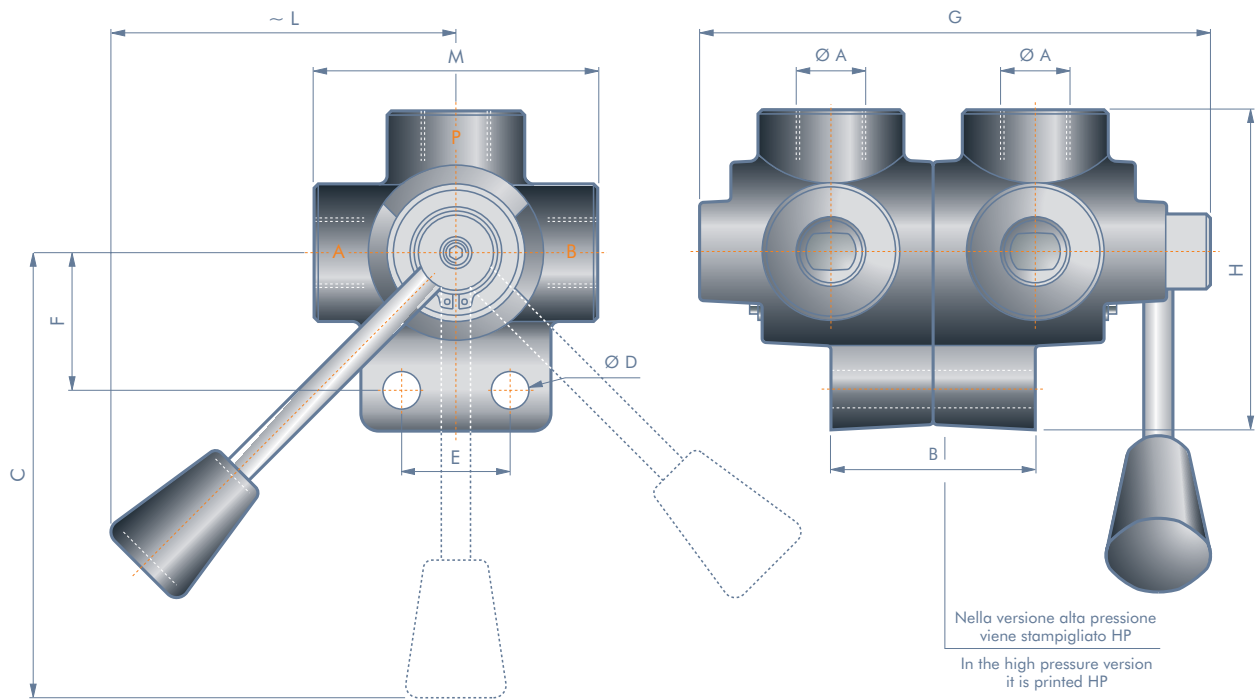
TIPO TYPE	PRESSIONE PRESSURE bar	PORTATA CAPACITY l/min	Ø A	B	C	Ø D	E	F	G	H	L
4V-3/8"G	250	38	3/8"G	25.5	105	8.5	54	27	72	76	165
4V-3/8"G AP	330										
4V-1/2"G	250	60	1/2"G	29.5			65	32.5	82	88	
4V-1/2"G AP	330										

2005

info@hydroven.com www.hydroven.com



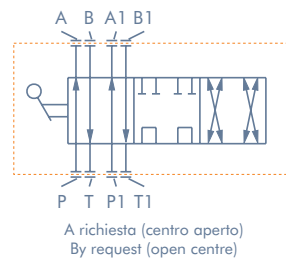
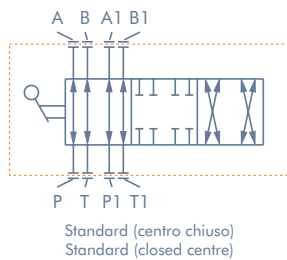
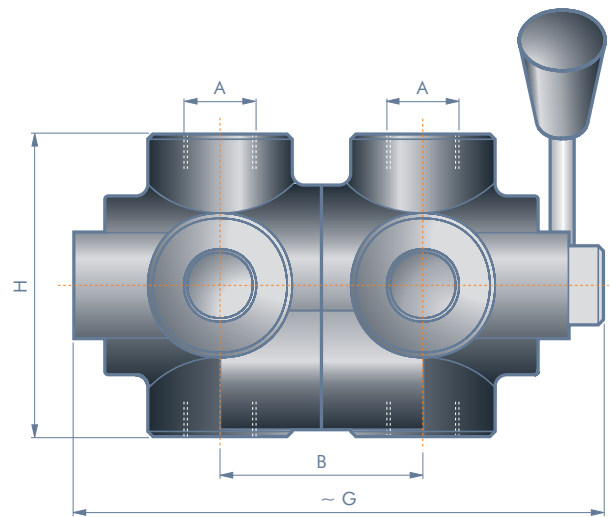
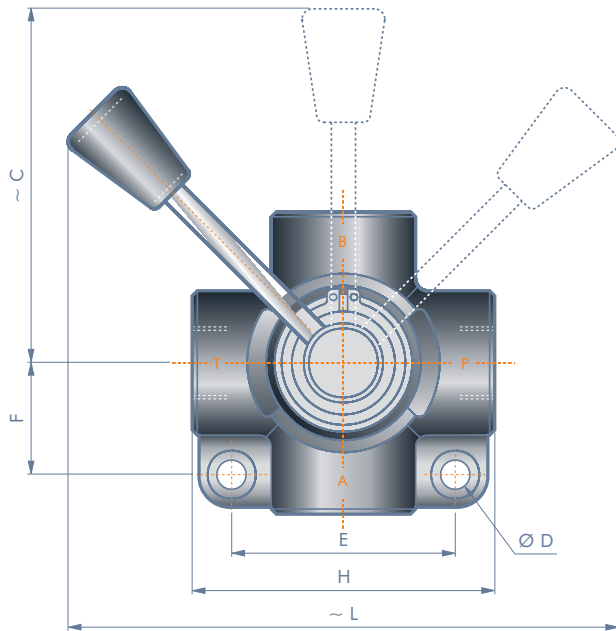
## 6-WAY DIVERTER



TIPO TYPE	PRESSIONE PRESSURE bar	PORTATA CAPACITY l/min	Ø A	B	C	Ø D	E	F	G	H	L	M
6V-3/8"G	250	30	3/8"G	45	105	8.5	26	33	117	76	83	68
6V-3/8"G AP	330											
6V-1/2"G	250	55	1/2"G	51	105	8.5	32	36	125	87	83	80
6V-1/2"G AP	330											
6V-3/4"G	250	100	3/4"G	55	105	11.0	32	42	140	103	83	94
6V-3/4"G AP	330											

# \*DEVIATORE A OTTO VIE

## 8-WAY DIVERTER



TIPO TYPE	PRESSIONE PRESSURE bar	PORTATA CAPACITY l/min	Ø A	B	C	Ø D	E	F	G	H	L
8V-3/8"G	250	38+38	3/8"G	51	105	8.5	54	27	135	76	165
8V-3/8"G AP	330						65	32.5			
8V-1/2"G	250	60+60	1/2"G	59			65	32.5	155	88	
8V-1/2"G AP	330						65	32.5			

2005

info@hydroven.com www.hydroven.com







▶ NOTES

A series of horizontal dotted lines for taking notes, with a large, light gray, stylized wave graphic overlaid on the page.



▶ NOTES

A series of horizontal dotted lines for writing notes, spanning the width of the page.

