

# SERIE ISO

# 3.1.2.6.

CODICE DI ORDINAZIONE / DECODING

3.1.2.6 . XXX . X . 0 . X . 0

**DIN** ISO 73  
**5 4 6 2**  
**SE**

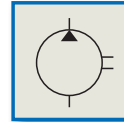
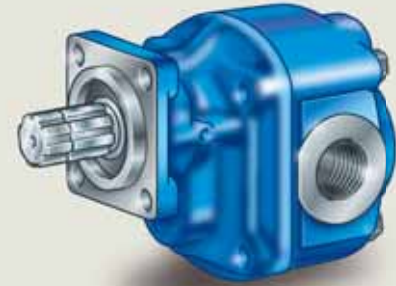
ALLESTIMENTI SPECIALI/SPECIAL OPTIONS  
0 = NON RICHIESTO/STANDARD OPTION  
2 = ALBERO SUPPORTATO/BEARING GEAR  
4 = ALBERO SUPPORTATO - MANDATA IN TESTA  
BEARING GEAR - REAR OUTLET  
7 = MANDATA IN TESTA/REAR OUTLET

ROTAZIONE/ROTATION  
1 = SINISTRO/ANTICLOCKWISE  
2 = DESTRO/CLOCKWISE

CILINDRATA/DISPLACEMENT

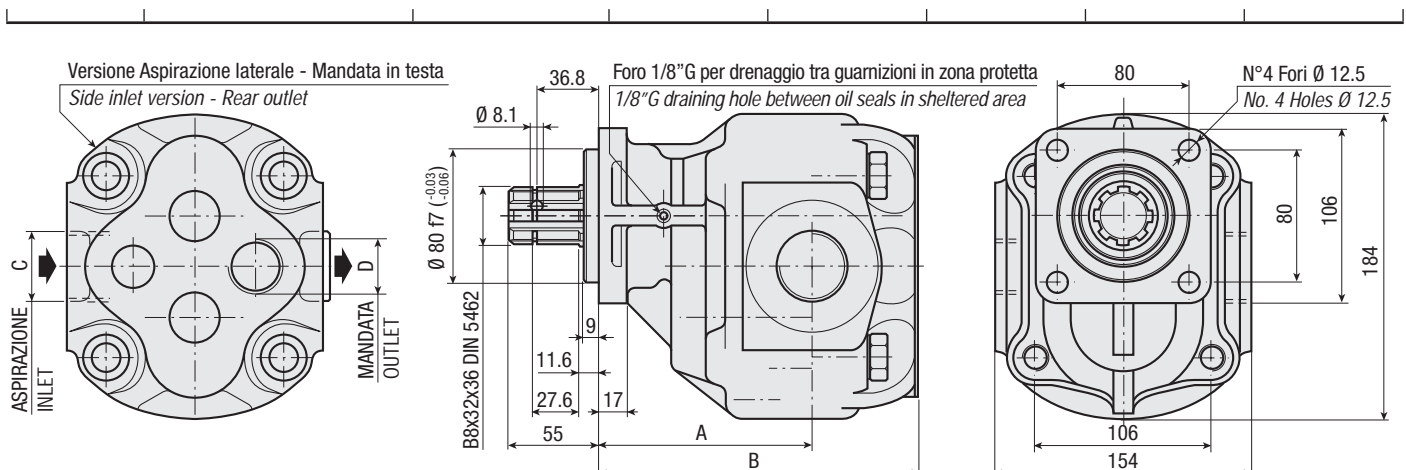
CODICE BASE/BASIC CODE

## Pompa ad Ingranaggi Gear Pump



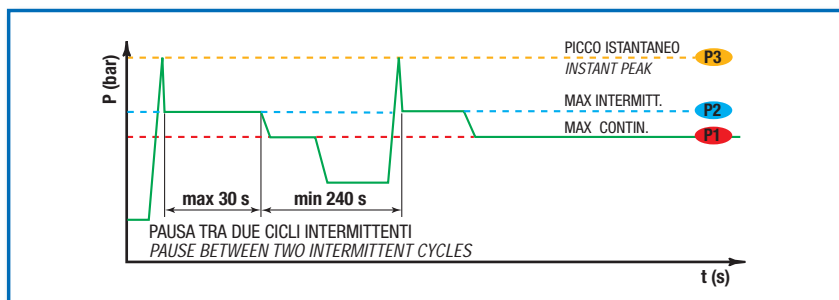
### CARATTERISTICHE E DATI TECNICI / SPECIFICATIONS AND TECHNICAL DATA

TIPO TYPE	CODICE CODE	CILINDRATA DISPLACEMENT cm <sup>3</sup> /rev.	A mm	B mm	C ASPIRAZIONE INLET	D MANDATA OUTLET	PESO WEIGHT kg
ISO 73	3.1.2.6.073.X.0.X.0	73	126	190	1" G	3/4" G	21.1



**DATI TECNICI / TECHNICAL DATA**

**ESEMPIO CICLI LAVORO / EXAMPLE OF WORKING CYCLES**



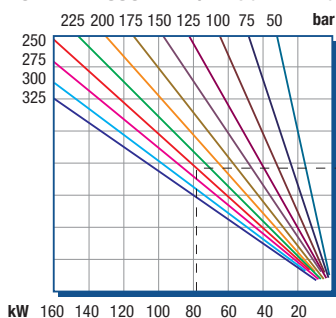
Pressione d'aspirazione: Inlet pressure:	0.7 ÷ 1.5 bar (assoluti/absolute)
Campo viscosità lavoro: Operating viscosity range:	12 ÷ 100 cSt
Temperatura fluido °C (t): Fluid temperature °C (t):	-10° + 80° C

Pressione Lavoro Working Press. P2	Contaminazione / Contamination		Filtro / Filter βx = 75
	NAS 1638	ISO 4406	
≤ 200 bar	12	21/18	40 μm
≥ 200 bar	11	20/17	25 μm

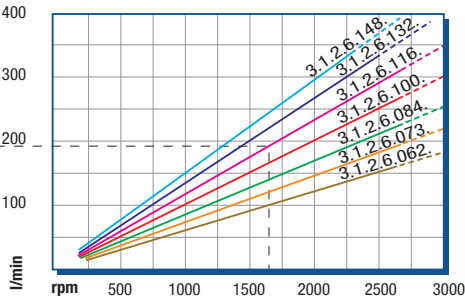
◀ **FILTRAZIONE CONSIGLIATA (ritorno o mandata)**  
**RECOMMENDED FILTERING (return or outlet)**

TIPO / TYPE			ISO 73
	Vg	cm <sup>3</sup> /n cm <sup>3</sup> /rev.	
Cilindrata Displacement			73
Pressione massima continua Max continuous operating pressure	P1		290
Pressione massima intermittente Max intermitt. operating pressure (max 30 s)	P2	bar	320
Pressione massima di picco Max peak pressure (≤ 0.1 s)	P3		450
Velocità massima intermittente Max intermittent speed (P ≤ 20 bar)	n3		3800
Velocità massima continua Max continuous speed (≤ P1)	n1	n/min r.p.m.	1800
Velocità minima intermittente Min intermittent speed (≤ P2 x 0.5) (max 30 s)	n4		300

**POTENZA ASSORBITA / ABSORBED POWER**



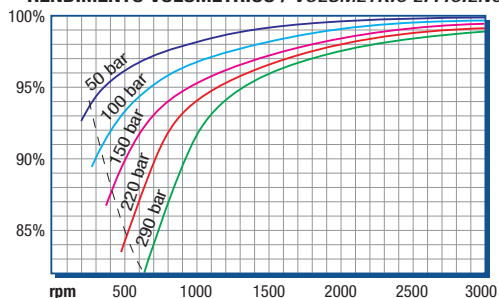
**PORTATA / CAPACITY**



RILIEVI ESEGUITI CON OLIO  
ISO VG 46 A 50° C (ν=30 cSt)  
THE ABOVE SPECIFICATIONS  
REFER TO OIL TYPE ISO  
VG 46 AT 50° C (ν=30 cSt)

**DIAGRAMMI / DIAGRAMS**

**RENDIMENTO VOLUMETRICO / VOLUMETRIC EFFICIENCY**



**COPPIA ASSORBITA / INPUT TORQUE**

