

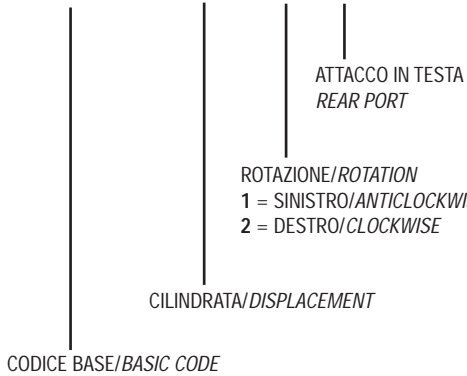
SERIE XLS

3.1.2.9.

Pompa ad Ingranaggi Gear Pump

CODICE DI ORDINAZIONE / DECODING

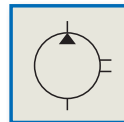
3.1.2.9 . XXX . X . 5 . 00



DIN
5 4 6 2 XLS 65
SE



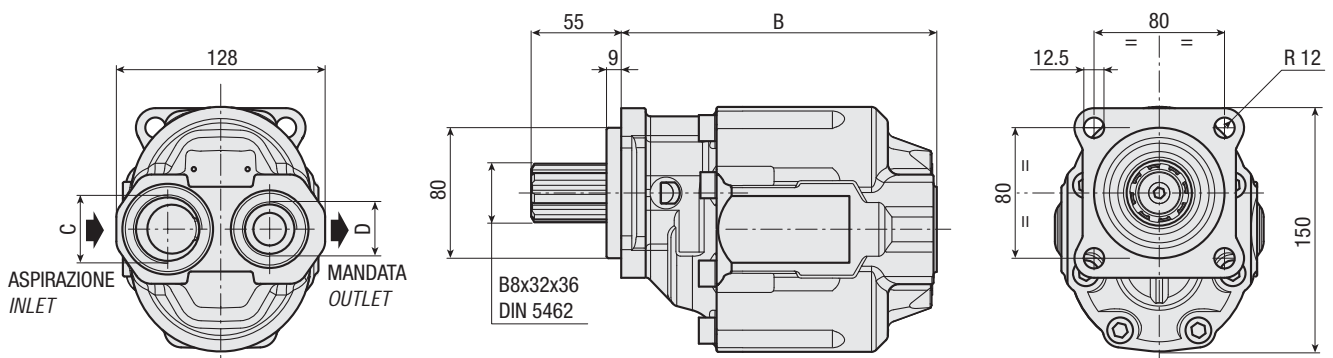
SCANIA



CARATTERISTICHE E DATI TECNICI / SPECIFICATIONS AND TECHNICAL DATA

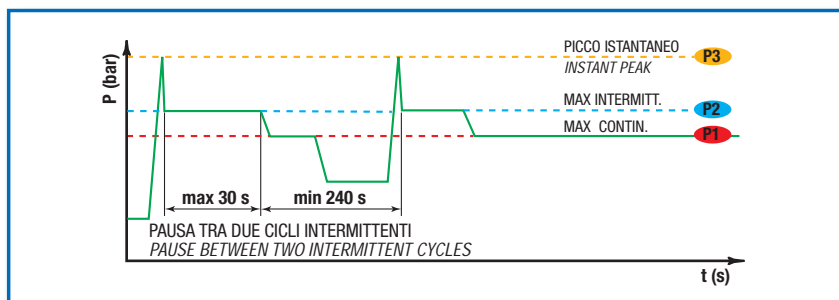
TIPO TYPE	CODICE CODE	CILINDRATA DISPLACEMENT cm ³ /rev.	B mm	C ASPIRAZIONE INLET	D MANDATA OUTLET	PESO WEIGHT kg
--------------	----------------	---	---------	---------------------------	------------------------	----------------------

XLS 65	3.1.2.9.065.X.5.00	65	178.5	1" G	3/4" G	12.6
--------	--------------------	----	-------	------	--------	------



DATI TECNICI / TECHNICAL DATA

ESEMPIO CICLI LAVORO / EXAMPLE OF WORKING CYCLES



Pressione d'aspirazione: Inlet pressure:	0.7 ÷ 1.5 bar (assoluti/absolute)
Campo viscosità lavoro: Operating viscosity range:	12 ÷ 100 cSt
Temperatura fluido °C (t): Fluid temperature °C (t):	-10° + 80° C

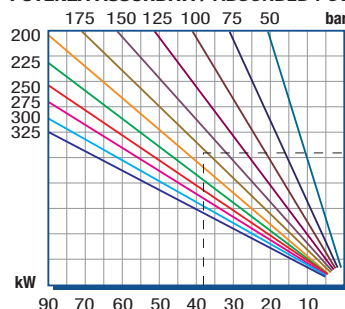
Pressione Lavoro Working Press. P2	Contaminazione / Contamination		Filtro / Filter βx = 75
	NAS 1638	ISO 4406	
≤ 200 bar	12	21/18	40 μm
≥ 200 bar	11	20/17	25 μm

◀ **FILTRAZIONE CONSIGLIATA (ritorno o mandata)**
RECOMMENDED FILTERING (return or outlet)

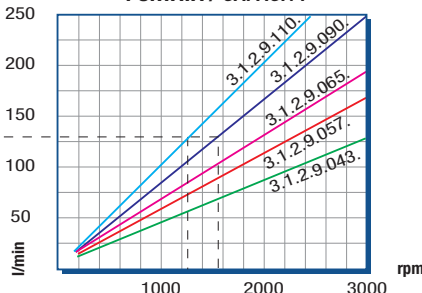
TIPO / TYPE			
Cilindrata Displacement	Vg	cm ³ /n	cm ³ /rev.
Pressione massima continua Max continuous operating pressure	P1		
Pressione massima intermittente Max intermitt. operating pressure	(max 30 s)	P2	bar
Pressione massima di picco Max peak pressure	(≤ 0.1 s)	P3	
Velocità massima intermittente Max intermittent speed	(P ≤ 20 bar)	n3	
Velocità massima continua Max continuous speed	(≤ P1)	n1	n/min r.p.m.
Velocità minima intermittente Min intermittent speed	(≤ P2 x 0.5) (max 30 s)	n4	

XLS 65
65
240
265
330
3000
2500
400

POTENZA ASSORBITA / ABSORBED POWER

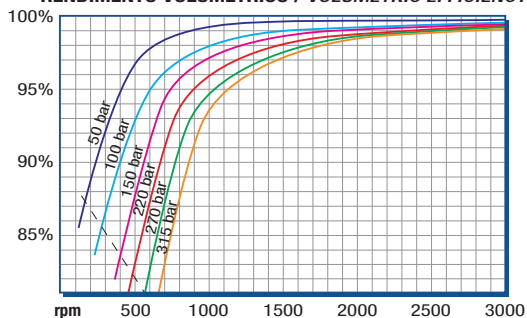


PORTATA / CAPACITY

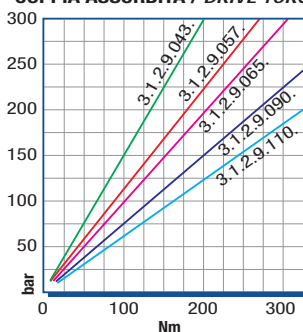


DIAGRAMMI / DIAGRAMS

RENDIMENTO VOLUMETRICO / VOLUMETRIC EFFICIENCY



COPPIA ASSORBITA / DRIVE TORQUE



RILIEVI ESEGUITI CON OLIO
ISO VG 46 A 50° C (ν=30 cSt)
THE ABOVE SPECIFICATIONS
REFER TO OIL TYPE ISO
VG 46 AT 50° C (ν=30 cSt)