

SERIE XBM

3.1.53.

CODICE DI ORDINAZIONE / DECODING

3.1.53 . XXX . 0 . 0 . 0 . 0

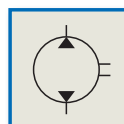
CILINDRATA/DISPLACEMENT

CODICE BASE/BASIC CODE

DIN
5 4 6 2
SE

XBM 65

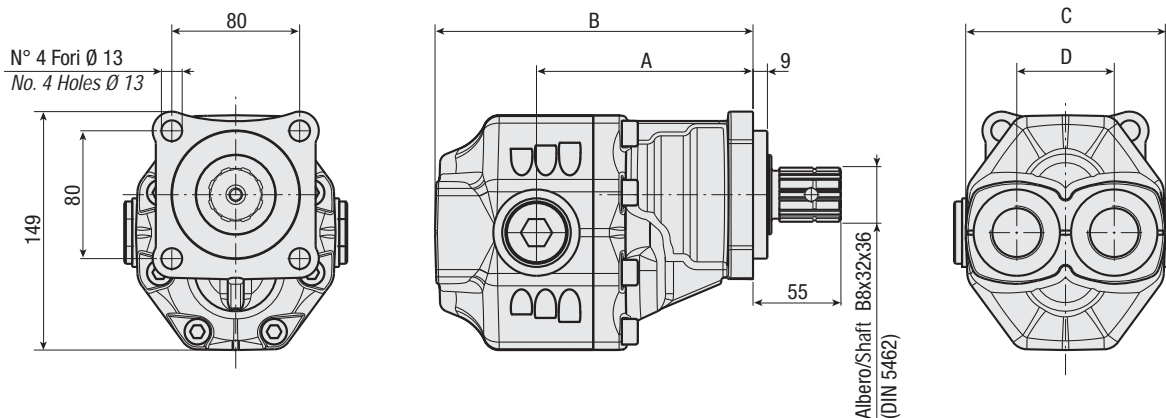
Pompa ad Ingranaggi
Gear Pump



CARATTERISTICHE E DATI TECNICI / SPECIFICATIONS AND TECHNICAL DATA

TIPO TYPE	CODICE CODE	CILINDRATA DISPLACEMENT cm ³ /rev.	A mm	B mm	C mm	D mm	ASPIRAZIONE INLET	MANDATA OUTLET	PESO WEIGHT kg
--------------	----------------	---	---------	---------	---------	---------	----------------------	-------------------	----------------------

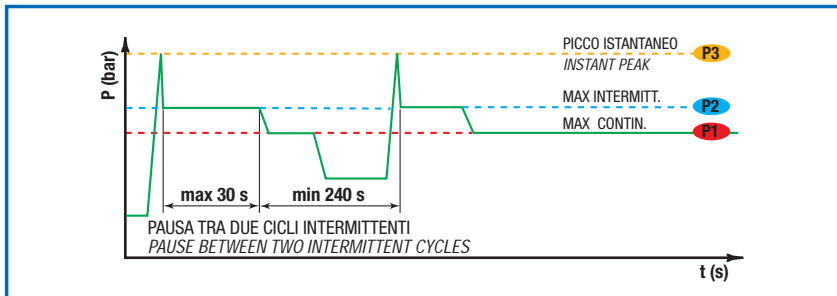
XBM 65	3.1.53.065.0.0.0.0	65	141	204	125	61	1" G	1" G	14,8
--------	--------------------	----	-----	-----	-----	----	------	------	------



KIT RASAMENTI/THRUST PLATES KIT COD. 2.06.043.00000 KIT GUARNIZIONI COMPLETO/COMPLETE SEALS KIT COD. 2.19.042.00000

DATI TECNICI / TECHNICAL DATA

ESEMPIO CICLI LAVORO / EXAMPLE OF WORKING CYCLES



Pressione d'aspirazione: Inlet pressure:	0.7 ÷ 1.5 bar (assoluti/absolute)
Campo viscosità lavoro: Operating viscosity range:	12 ÷ 100 cSt
Temperatura fluido °C (t): Fluid temperature °C (t):	-10° + 80° C

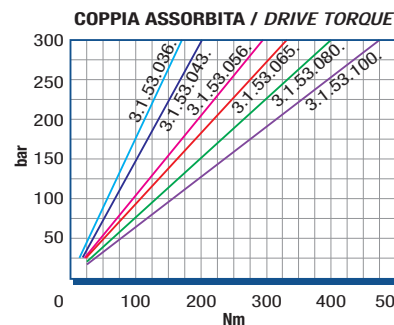
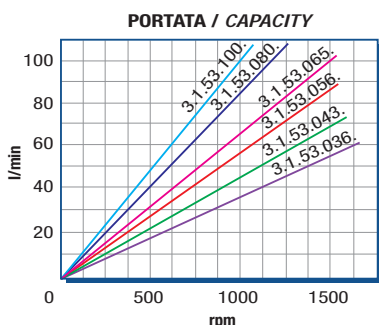
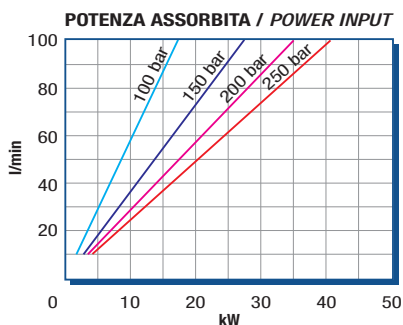
Pressione Lavoro Working Press. P2	Contaminazione / Contamination		Filtro / Filter βx = 75
	NAS 1638	ISO 4406	
≤ 200 bar	12	21/18	40 μm
≥ 200 bar	11	20/17	25 μm

◀ **FILTRAZIONE CONSIGLIATA (ritorno o mandata)**
RECOMMENDED FILTERING (return or outlet)

TIPO / TYPE					XBM65			
Cilindrata Displacement	Vg	cm ³ /n cm ³ /rev.				65		
Pressione massima continua Max continuous operating pressure	P1	bar				200		
Pressione massima intermittente Max intermitt. operat. press.	(max 30 s) P2					210		
Pressione massima di picco Max peak pressure	(≤ 0.1 s) P3					220		
Velocità massima intermittente Max intermittent speed	(P ≤ 20 bar) n3	n/min r.p.m.				1800		
Velocità massima continua Max continuous speed	(≤ P1) n1					1500		
Velocità minima intermittente Min intermittent speed	(≤ P2 x 0.5) (max 30 s) n4					300		

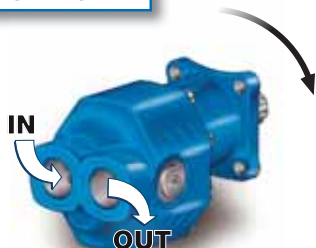
DIAGRAMMI / DIAGRAMS

RILIEVI ESEGUITI CON OLIO ISO VG 46 A 50° C (ν = 30 cSt)
THE ABOVE SPECIFICATIONS REFER TO OIL TYPE ISO VG 46 AT 50° C (ν = 30 cSt)



ROTAZIONE POMPA / PUMP ROTATION

**SINISTRA
ANTI-CLOCKWISE**



**DESTRA
CLOCKWISE**

