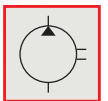
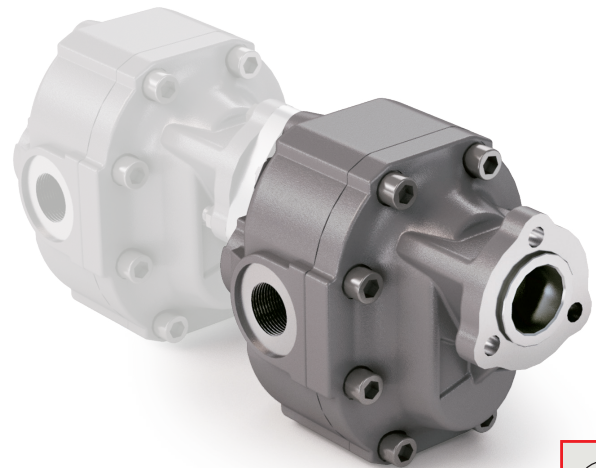
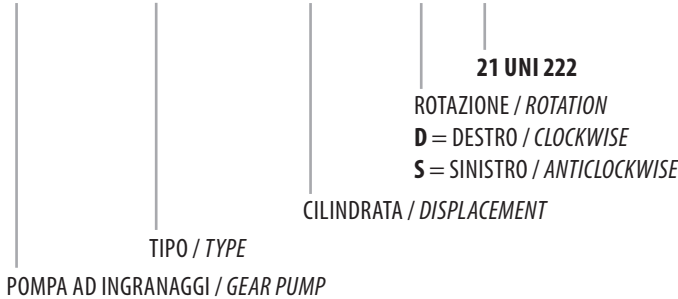


## TANDEM 21 UNI 222

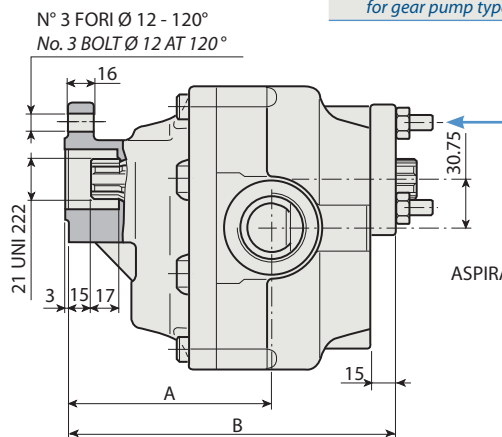
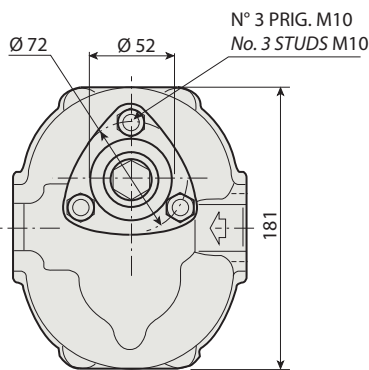
CODICE DI ORDINAZIONE / ORDERING CODE

### 200 FZH XXX X T

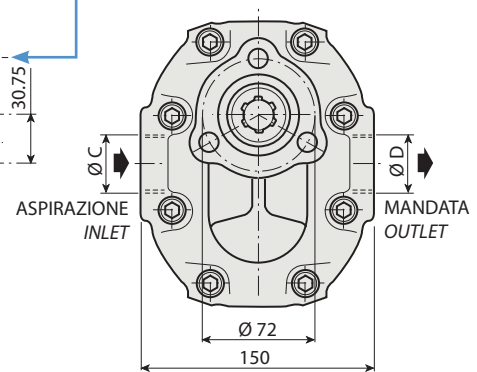


1

### FZH 62 T



KIT ACCOPPIAMENTO POSTERIORE: per pompa ad ingranaggi tipo	<b>FZO</b>	<b>198KPP09000</b>
REAR MOUNTING KIT: for gear pump type	<b>BPS</b>	<b>198KPP10000</b>



### CARATTERISTICHE E DATI TECNICI / SPECIFICATIONS AND TECHNICAL DATA

TIPO TYPE	CODICE / CODE		CILINDRATA DISPLACEMENT cm <sup>3</sup> /rev.	A mm	B mm	C ASPIRAZIONE INLET	D MANDATA OUTLET	PESO WEIGHT kg
	ROTAZIONE DESTRA CLOCKWISE ROT.	ROTAZIONE SINISTRA ANTICLOCKWISE ROT.						
<b>FZH 62 T</b>	<b>200FZH062DT</b>	<b>200FZH062ST</b>	<b>62</b>	<b>125</b>	<b>197</b>	<b>1" G</b>	<b>¾" G</b>	<b>16</b>

KIT RASAMENTI / THRUST PLATES KIT CODICE / CODE 2H451075000

KIT GUARNIZIONI COMPLETO / COMPLETE SEALS KIT CODICE / CODE 21903500000

Per la scelta dei raccordi orientabili vedi pag. 212-213 / For the selection of adjustable fittings see page 212-213

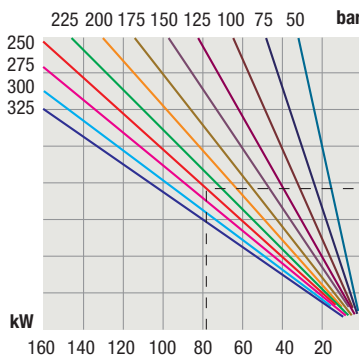
- A richiesta possono essere fornite le pompe ad ingranaggi con le guarnizioni HNBR per climi freddi (-40 °C).
- On request our gear pumps may be supplied with HNBR seals for cold climates (-40 °C).

# TANDEM 21 UNI 222

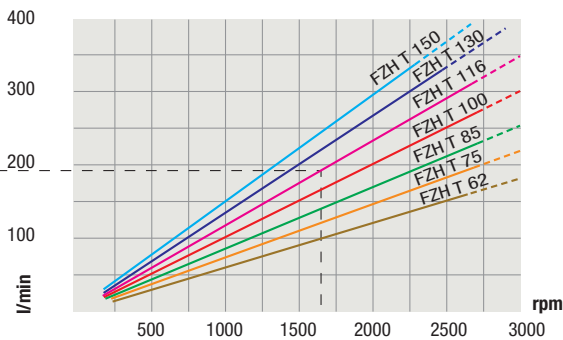
TIPO / TYPE		FZH 62 T	
Cilindrata <i>Displacement</i>	Vg	cm <sup>3</sup> /n cm <sup>3</sup> /rev.	62
Pressione massima continua <i>Max continuous operating pressure</i>	P1		300
Pressione massima intermittente <i>Max intermittent operating pressure</i>	(max 30 s) P2	bar	350
Pressione massima di picco <i>Max peak pressure</i>	(≤ 0.1 s) P3		450
Velocità massima intermittente <i>Max intermittent speed</i>	(P ≤ 20 bar) n3		3800
Velocità massima continua <i>Max continuous speed</i>	(≤ P1) n1	n/min r.p.m.	2000
Velocità minima intermittente <i>Min intermittent speed</i>	(≤ P2 x 0.5) (max 30 s) n4		400

## DIAGRAMMI / DIAGRAMS

POTENZA ASSORBITA  
POWER INPUT

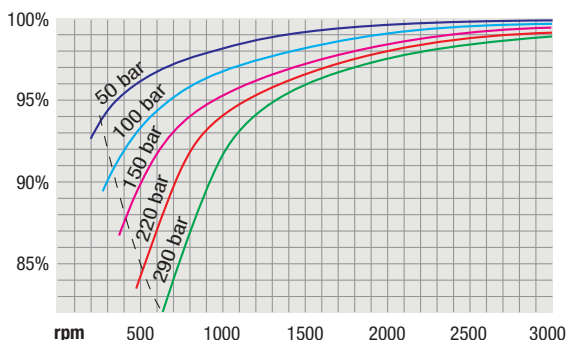


PORTATA  
CAPACITY

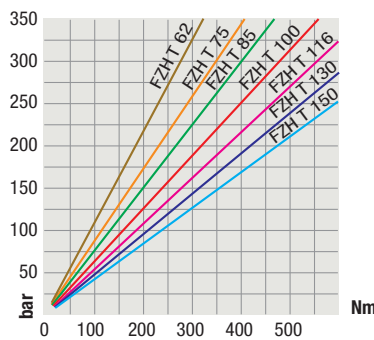


RILIEVI ESEGUITI CON OLIO ISO VG 46  
A 50° C ( $\nu = 30$  cSt)  
THE ABOVE SPECIFICATIONS REFER TO OIL  
TYPE ISO VG 46 AT 50° C ( $\nu = 30$  cSt)

RENDIMENTO VOLUMETRICO  
VOLUMETRIC EFFICIENCY



COPPIA ASSORBITA  
DRIVE TORQUE



Verificare, nel caso vi sia l'utilizzo  
contemporaneo delle due pompe, che la  
coppia sull'albero in uscita non superi  
i 270 Nm.

*In case of simultaneous use of both pumps,  
make sure that the torque on output shaft  
does not exceed 270 Nm.*