

## TANDEM DIN 5462 SE

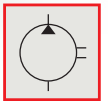
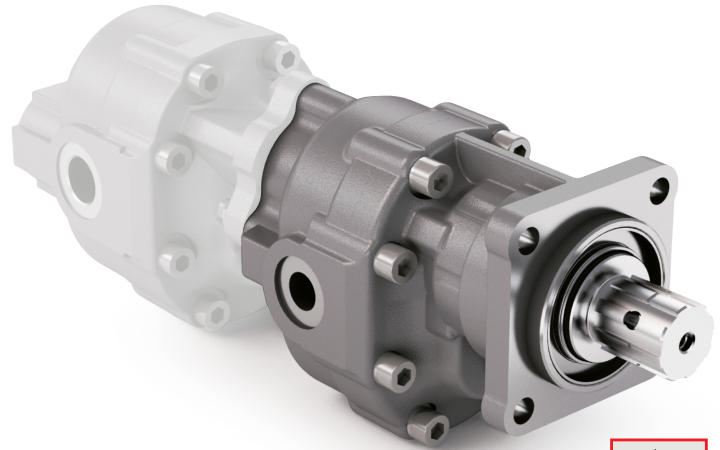
CODICE DI ORDINAZIONE / ORDERING CODE

### 200 FZO XXX X V

TIPO / TYPE  
POMPA AD INGRANAGGI / GEAR PUMP

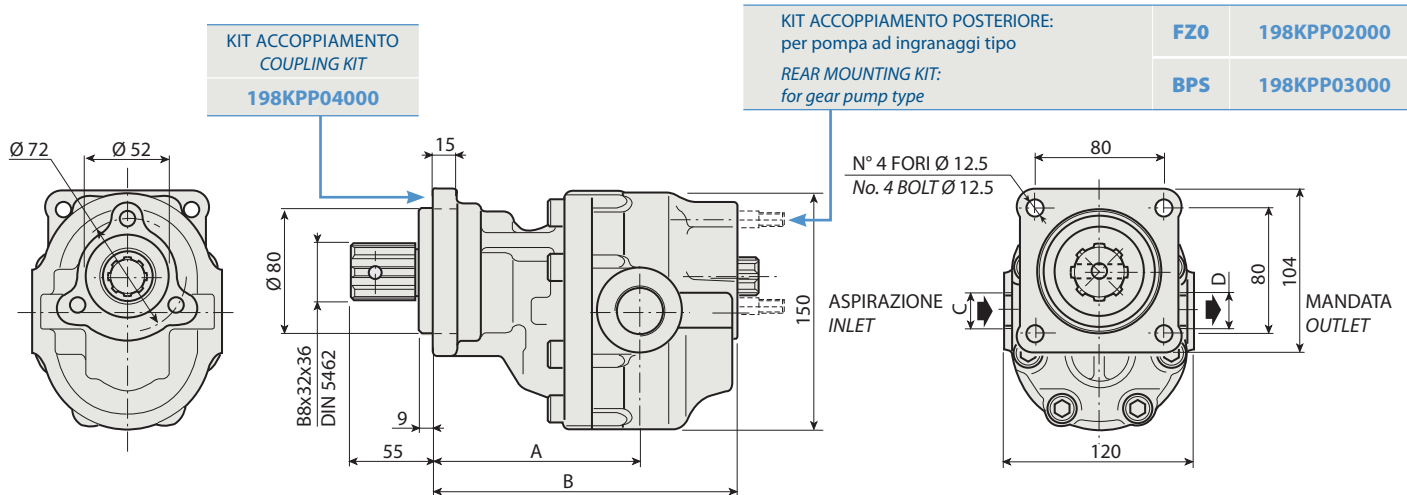
CILINDRATA / DISPLACEMENT

DIN 5462 SE  
ROTAZIONE / ROTATION  
D = DESTRO / CLOCKWISE  
S = SINISTRO / ANTICLOCKWISE



1

### FZO 43 V



### CARATTERISTICHE E DATI TECNICI / SPECIFICATIONS AND TECHNICAL DATA

TIPO TYPE	CODICE / CODE		CILINDRATA DISPLACEMENT cm <sup>3</sup> /rev.	A mm	B mm	C ASPIRAZIONE INLET	D MANDATA OUTLET	PESO WEIGHT kg
	ROTAZIONE DESTRA CLOCKWISE ROT.	ROTAZIONE SINISTRA ANTICLOCKWISE ROT.						

<b>FZO 43 V</b>	<b>200FZ0043DV</b>	<b>200FZ0043SV</b>	<b>43</b>	<b>131</b>	<b>191.5</b>	<b>1" G</b>	<b>3/4" G</b>	<b>12.6</b>
-----------------	--------------------	--------------------	-----------	------------	--------------	-------------	---------------	-------------

KIT RASAMENTI / THRUST PLATES KIT CODICE / CODE 20601800000

KIT GUARNIZIONI COMPLETO / COMPLETE SEALS KIT CODICE / CODE 21902200000

Per la scelta dei raccordi orientabili vedi pag. 212-213 / For the selection of adjustable fittings see page 212-213

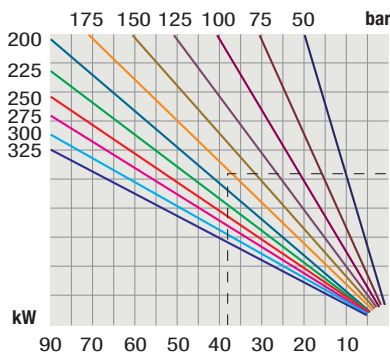
- A richiesta possono essere fornite le pompe ad ingranaggi con le guarnizioni HNBR per climi freddi (-40 °C).
- On request our gear pumps may be supplied with HNBR seals for cold climates (-40 °C).

## TANDEM DIN 5462 SE

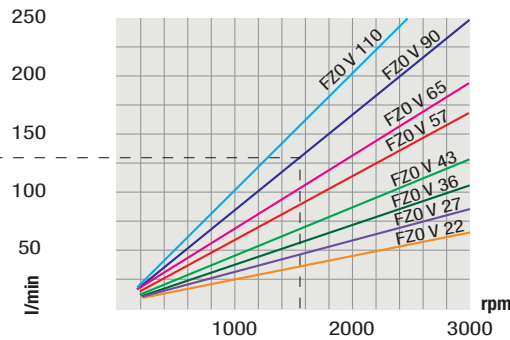
TIPO / TYPE			FZO 43 V
Cilindrata <i>Displacement</i>	Vg	cm <sup>3</sup> /n cm <sup>3</sup> /rev.	43
Pressione massima continua <i>Max continuous operating pressure</i>	P1	bar	280
Pressione massima intermittente (max 30 s) <i>Max intermittent operating pressure</i>	P2		305
Pressione massima di picco (≤ 0.1 s) <i>Max peak pressure</i>	P3		400
Velocità massima intermittente <i>Max intermittent speed</i>	(P ≤ 20 bar)	n3	3500
Velocità massima continua <i>Max continuous speed</i>	(≤ P1)	n1	2200
Velocità minima intermittente <i>Min intermittent speed</i>	(≤ P2 x 0.5) (max 30 s)	n4	350

### DIAGRAMMI / DIAGRAMS

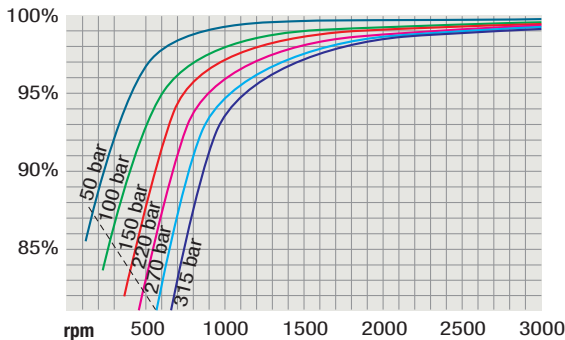
POTENZA ASSORBITA  
POWER INPUT



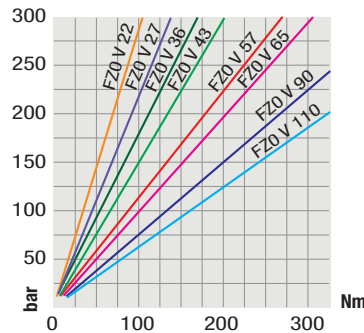
PORTATA  
CAPACITY



RENDIMENTO VOLUMETRICO  
VOLUMETRIC EFFICIENCY



COPPIA ASSORBITA  
DRIVE TORQUE



RILIEVI ESEGUITI CON OLIO ISO VG 46  
A 50° C ( $\nu = 30$  cSt)

THE ABOVE SPECIFICATIONS REFER TO OIL  
TYPE ISO VG 46 AT 50° C ( $\nu = 30$  cSt)



Verificare, nel caso vi sia l'utilizzo contemporaneo delle due pompe, che la coppia sull'albero in uscita non superi i 270 Nm.

In case of simultaneous use of both pumps, make sure that the torque on output shaft does not exceed 270 Nm.