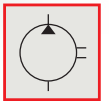
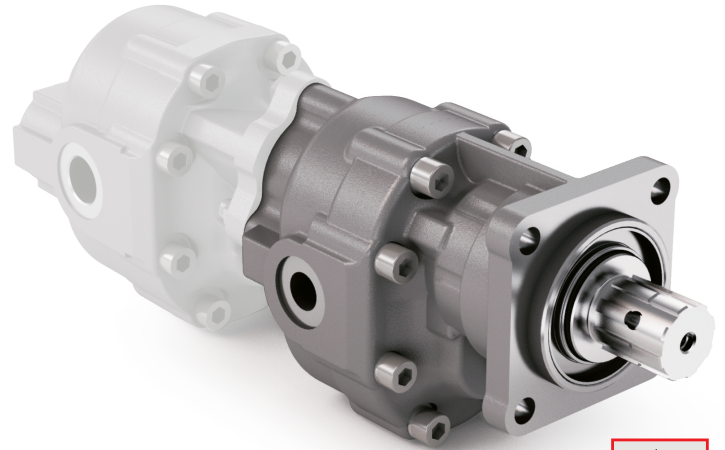


TANDEM DIN 5462 SE

CODICE DI ORDINAZIONE / ORDERING CODE

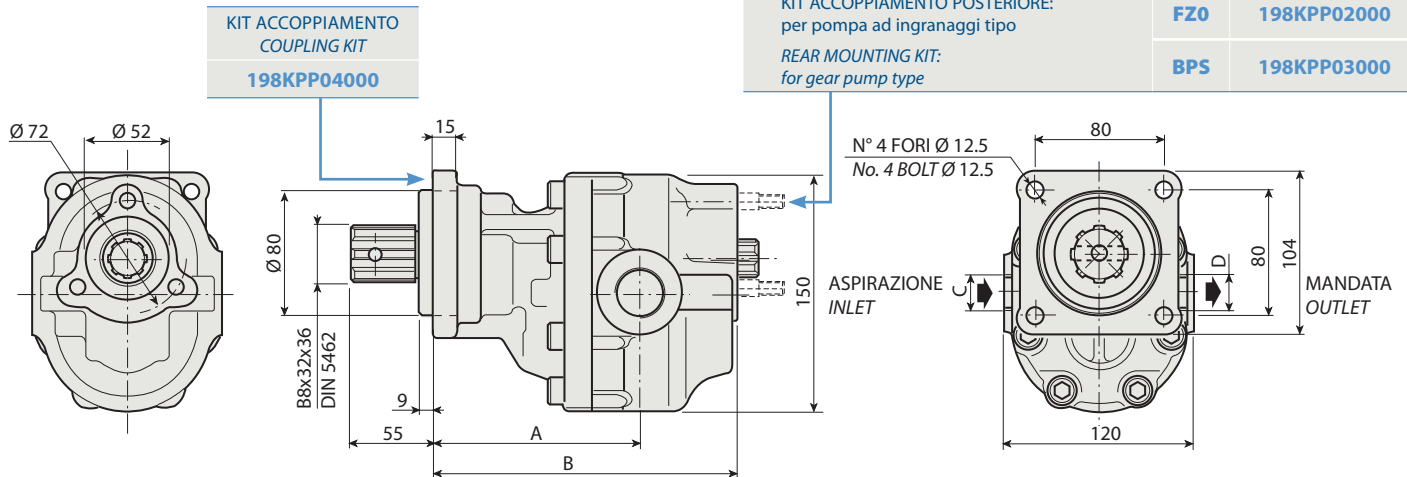
200 FZO XXX X V

DIN 5462 SE
 ROTAZIONE / ROTATION
D = DESTRO / CLOCKWISE
S = SINISTRO / ANTICLOCKWISE
 CILINDRATA / DISPLACEMENT
 TIPO / TYPE
 POMPA AD INGRANAGGI / GEAR PUMP



1

FZO 27 V



CARATTERISTICHE E DATI TECNICI / SPECIFICATIONS AND TECHNICAL DATA

| TIPO TYPE | CODICE / CODE | | CILINDRATA DISPLACEMENT cm ³ /rev. | A mm | B mm | C ASPIRAZIONE INLET | D MANDATA OUTLET | PESO WEIGHT kg |
|-----------------|------------------------------------|--|---|---------|---------|---------------------------|------------------------|----------------------|
| | ROTAZIONE DESTRA CLOCKWISE ROT. | ROTAZIONE SINISTRA ANTICLOCKWISE ROT. | | | | | | |
| FZO 27 V | 200FZ0027DV | 200FZ0027SV | 27 | 125 | 180 | 3/4" G | 1/2" G | 11.5 |
| | | | | | | | | |
| | | | | | | | | |
| | | | | | | | | |
| | | | | | | | | |

KIT RASAMENTI / THRUST PLATES KIT CODICE / CODE 20601800000

KIT GUARNIZIONI COMPLETO / COMPLETE SEALS KIT CODICE / CODE 21902200000

Per la scelta dei raccordi orientabili vedi pag. 212-213 / For the selection of adjustable fittings see page 212-213

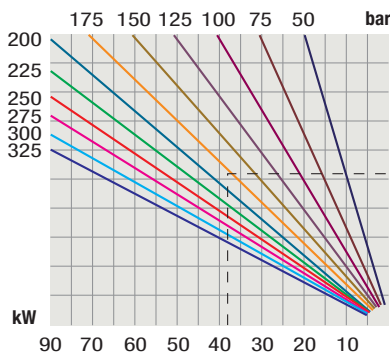
- A richiesta possono essere fornite le pompe ad ingranaggi con le guarnizioni HNBR per climi freddi (-40 °C).
- On request our gear pumps may be supplied with HNBR seals for cold climates (-40 °C).

TANDEM DIN 5462 SE

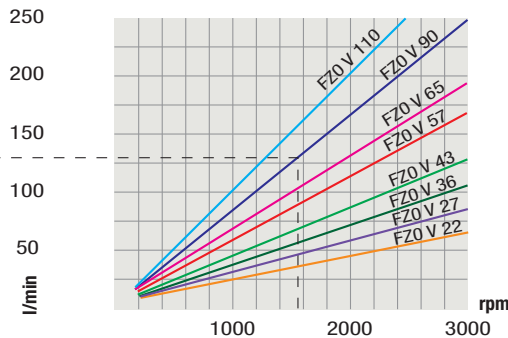
| TIPO / TYPE | | FZO 27 V | |
|--|--|----------|-----------------|
| Cilindrata <i>Displacement</i> | Vg cm ³ /n cm ³ /rev. | 27 | |
| Pressione massima continua <i>Max continuous operating pressure</i> | P1 | 300 | |
| Pressione massima intermittente (max 30 s) <i>Max intermittent operating pressure</i> | P2 | 325 | |
| Pressione massima di picco (≤ 0.1 s) <i>Max peak pressure</i> | P3 | 450 | |
| Velocità massima intermittente (P ≤ 20 bar) <i>Max intermittent speed</i> | n3 | 3500 | |
| Velocità massima continua (≤ P1) <i>Max continuous speed</i> | n1 | 2200 | n/min r.p.m. |
| Velocità minima intermittente (≤ P2 x 0.5) (max 30 s) <i>Min intermittent speed</i> | n4 | 350 | |

DIAGRAMMI / DIAGRAMS

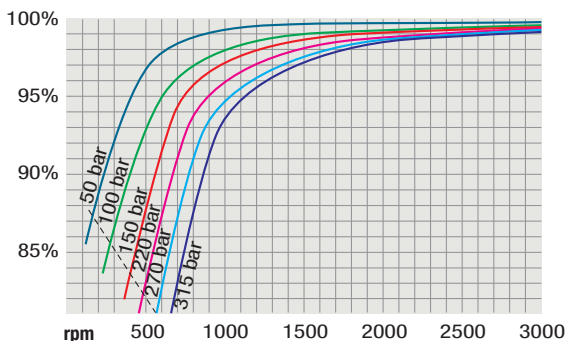
POTENZA ASSORBITA
POWER INPUT



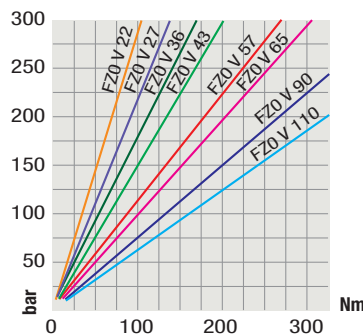
PORTATA
CAPACITY



RENDIMENTO VOLUMETRICO
VOLUMETRIC EFFICIENCY



COPPIA ASSORBITA
DRIVE TORQUE



RILIEVI ESEGUITI CON OLIO ISO VG 46
A 50° C ($\nu = 30$ cSt)
THE ABOVE SPECIFICATIONS REFER TO OIL
TYPE ISO VG 46 AT 50° C ($\nu = 30$ cSt)



Verificare, nel caso vi sia l'utilizzo contemporaneo delle due pompe, che la coppia sull'albero in uscita non superi i 270 Nm.
In case of simultaneous use of both pumps, make sure that the torque on output shaft does not exceed 270 Nm.