

# SERIE XPA-H 3.1.2.5.

CODICE DI ORDINAZIONE / DECODING

3.1.2.5 . XXX . X . 0 . 0 . 0

**DIN** -  
XPA-H 15  
**5 4 8 2**

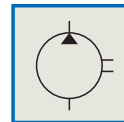
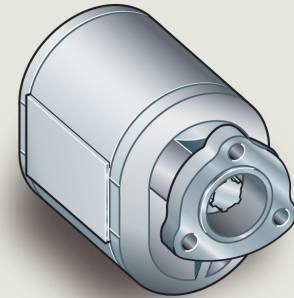
ALLESTIMENTI SPECIALI/SPECIAL OPTIONS  
0 = SENZA VALVOLA ELETTRICA/WITHOUT ELECTRIC VALVE

ROTAZIONE/ROTATION  
1 = SINISTRO/ANTICLOCKWISE  
2 = DESTRO/CLOCKWISE

CILINDRATA/DISPLACEMENT

CODICE BASE/BASIC CODE

## Pompa ad Ingranaggi Gear Pump

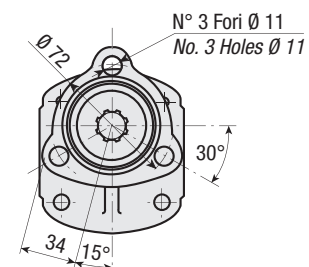
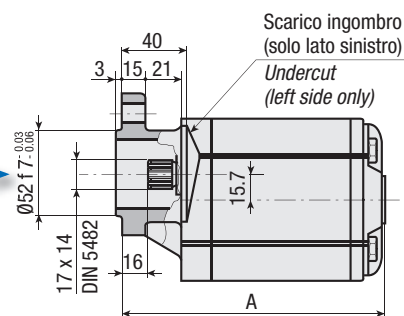
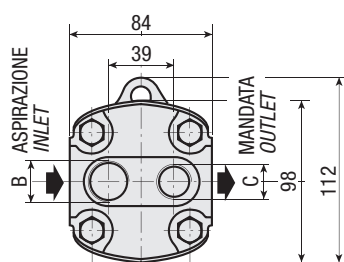


### CARATTERISTICHE E DATI TECNICI / SPECIFICATIONS AND TECHNICAL DATA

TIPO TYPE	CODICE CODE	CILINDRATA DISPLACEMENT cm <sup>3</sup> /rev.	A mm	B ASPIRAZIONE INLET	C MANDATA OUTLET	PESO WEIGHT kg
XPA-H 15	3.1.2.5.015.X.0.0.0	15	148	3/4" G	1/2" G	3.0

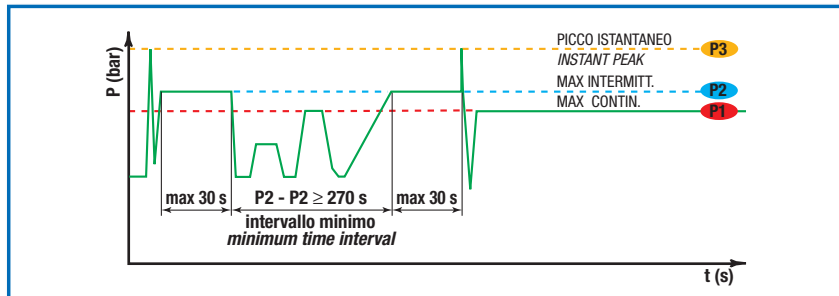
#### KIT DI MONTAGGIO MOUNTING KIT

2.05.P486.0000



**DATI TECNICI / TECHNICAL DATA**

**ESEMPIO CICLI LAVORO / EXAMPLE OF WORKING CYCLES**



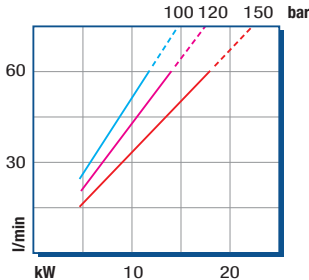
<b>Pressione d'aspirazione:</b> <i>Inlet pressure:</i>	0.7 ÷ 1.5 bar (assoluti/absolute)
<b>Campo viscosità lavoro:</b> <i>Operating viscosity range:</i>	12 ÷ 100 cSt
<b>Temperatura fluido °C (t):</b> <i>Fluid temperature °C (t):</i>	-10° + 80° C

Pressione Lavoro <i>Working Press.</i>	P2	Contaminazione / <i>Contamination</i>		Filtro / <i>Filter</i> βx = 75
		NAS 1638	ISO 4406	
≤ 200 bar		12	21/18	40 μm

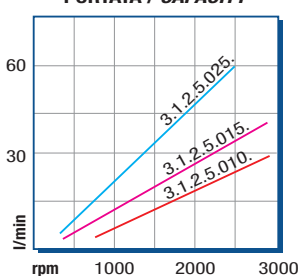
◀ **FILTRAZIONE CONSIGLIATA** (ritorno o mandata)  
**RECOMMENDED FILTERING** (return or outlet)

TIPO / <i>TYPE</i>				XPA-H 15	
	Cilindrata <i>Displacement</i>	Vg	cm <sup>3</sup> /n cm <sup>3</sup> /rev.		15
Pressione massima continua <i>Max continuous operating pressure</i>	P1	bar		150	
Pressione massima intermittente <i>Max intermitt. operating pressure</i>	(max 30 s) P2			170	
Pressione massima di picco <i>Max peak pressure</i>	(≤ 0.1 s) P3			210	
Velocità massima intermittente <i>Max intermittent speed</i>	(P ≤ 20 bar) n3	n/min r.p.m.		3000	
Velocità massima continua <i>Max continuous speed</i>	(≤ P1) n1			1500	
Velocità minima intermittente <i>Min intermittent speed</i>	(≤ P2 x 0.5) (max 30 s) n4			650	

POTENZA ASSORBITA / *ABSORBED POWER*



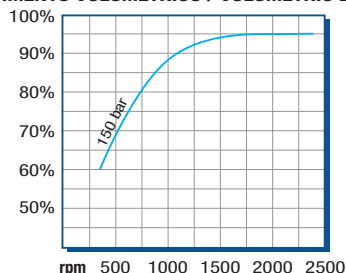
PORTATA / *CAPACITY*



RILIEVI ESEGUITI CON OLIO  
ISO VG 46 A 50° C (ν=30 cSt)  
THE ABOVE SPECIFICATIONS  
REFER TO OIL TYPE ISO  
VG 46 AT 50° C (ν=30 cSt)

**DIAGRAMMI / *DIAGRAMS***

RENDIMENTO VOLUMETRICO / *VOLUMETRIC EFFICIENCY*



COPPIA ASSORBITA / *INPUT TORQUE*

