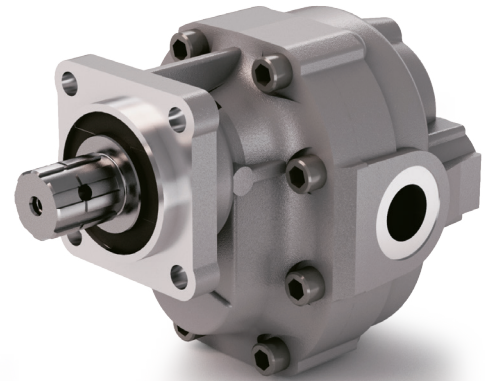


# DIN 5462 SE

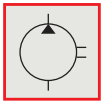
CODICE DI ORDINAZIONE / ORDERING CODE

## 200 FZP XXX X S

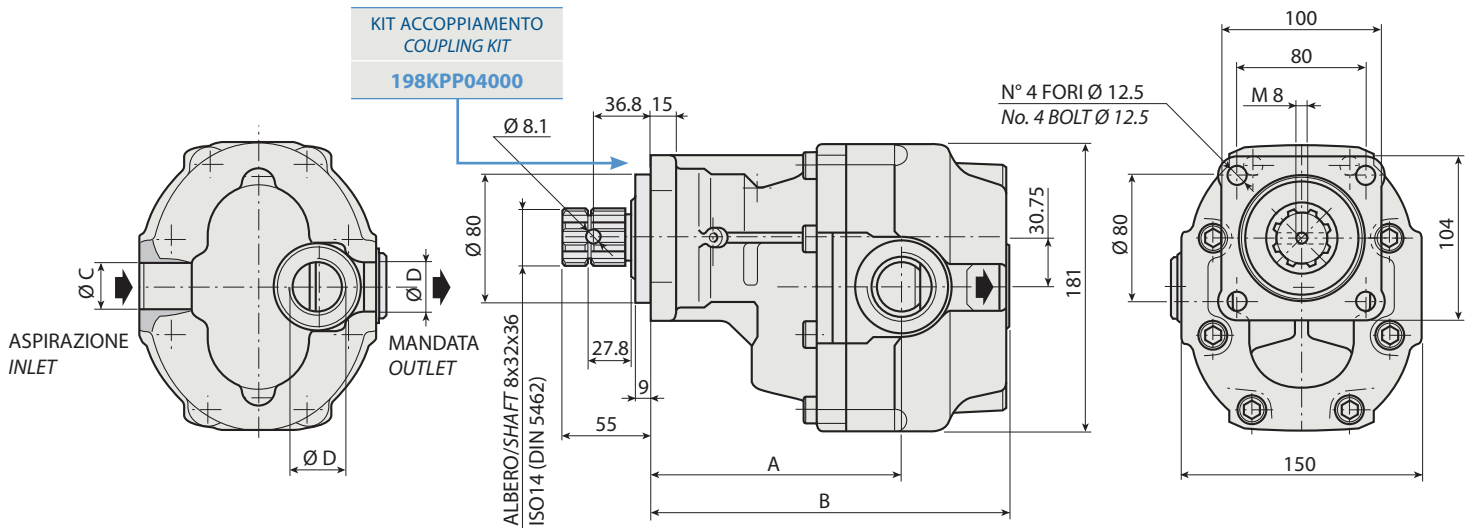
**DIN 5462 SE**  
 ROTAZIONE / ROTATION  
**D** = DESTRO / CLOCKWISE  
**S** = SINISTRO / ANTICLOCKWISE  
 CILINDRATA / DISPLACEMENT  
 TIPO / TYPE  
 POMPA AD INGRANAGGI / GEAR PUMP



ALBERO USCITA NON SUPPORTATO  
OUTPUT SHAFT NOT SUPPORTED



**FZP 116**



### CARATTERISTICHE E DATI TECNICI / SPECIFICATIONS AND TECHNICAL DATA

TIPO TYPE	CODICE / CODE		CILINDRATA DISPLACEMENT	A	B	C	D	PESO WEIGHT
	ROTAZIONE DESTRA CLOCKWISE ROT.	ROTAZIONE SINISTRA ANTICLOCKWISE ROT.	cm <sup>3</sup> /rev.	mm	mm	ASPIRAZIONE INLET	MANDATA OUTLET	kg

<b>FZP 116</b>	<b>200FZP116DS</b>	<b>200FZP116SS</b>	<b>116</b>	<b>139.5</b>	<b>210.5</b>	<b>1" 1/4 G</b>	<b>1" G</b>	<b>20.7</b>
----------------	--------------------	--------------------	------------	--------------	--------------	-----------------	-------------	-------------

KIT RASAMENTI / THRUST PLATES KIT CODICE / CODE 2H451075000

KIT GUARNIZIONI COMPLETO / COMPLETE SEALS KIT CODICE / CODE 21901500000

Per la scelta dei raccordi orientabili vedi pag. 212-213 / For the selection of adjustable fittings see page 212-213

- A richiesta possono essere fornite le pompe ad ingranaggi con le guarnizioni HNBR per climi freddi (-40 °C).
- On request our gear pumps may be supplied with HNBR seals for cold climates (-40 °C).

# DIN 5462 SE

TIPO / TYPE			
Cilindrata <i>Displacement</i>	Vg	cm <sup>3</sup> /n cm <sup>3</sup> /rev.	
Pressione massima continua <i>Max continuous operating pressure</i>	P1		
Pressione massima intermittente <i>Max intermittent operating pressure</i>	(max 30 s) P2	bar	
Pressione massima di picco <i>Max peak pressure</i>	(≤ 0.1 s) P3		
Velocità massima intermittente <i>Max intermittent speed</i>	(P ≤ 20 bar) n3		
Velocità massima continua <i>Max continuous speed</i>	(≤ P1) n1	n/min r.p.m.	
Velocità minima intermittente <i>Min intermittent speed</i>	(≤ P2 x 0.5) (max 30 s) n4		

**FZP 116**

116

250

280

340

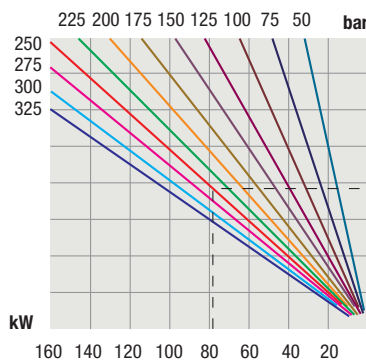
3000

1500

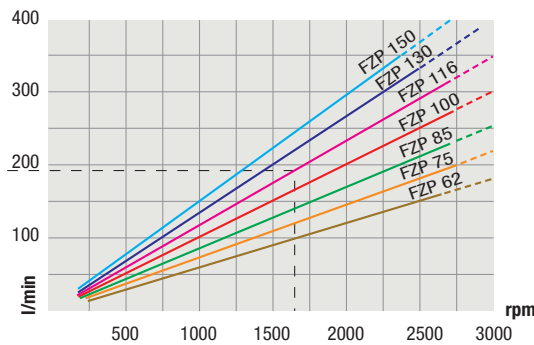
250

## DIAGRAMMI / DIAGRAMS

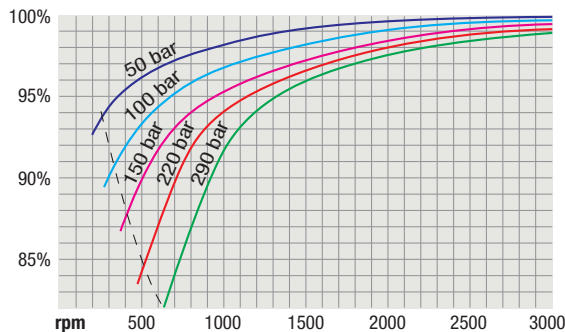
**POTENZA ASSORBITA  
POWER INPUT**



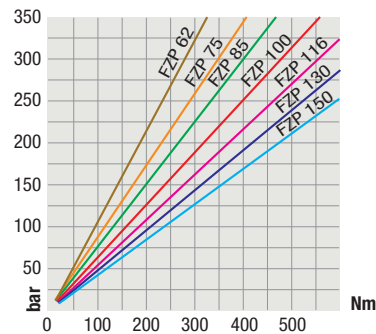
**PORTATA  
CAPACITY**



**RENDIMENTO VOLUMETRICO  
VOLUMETRIC EFFICIENCY**



**COPPIA ASSORBITA  
DRIVE TORQUE**



RILIEVI ESEGUITI CON OLIO ISO VG 46 A 50° C ( $\nu = 30$  cSt)

THE ABOVE SPECIFICATIONS REFER TO OIL TYPE ISO VG 46 AT 50° C ( $\nu = 30$  cSt)