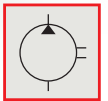
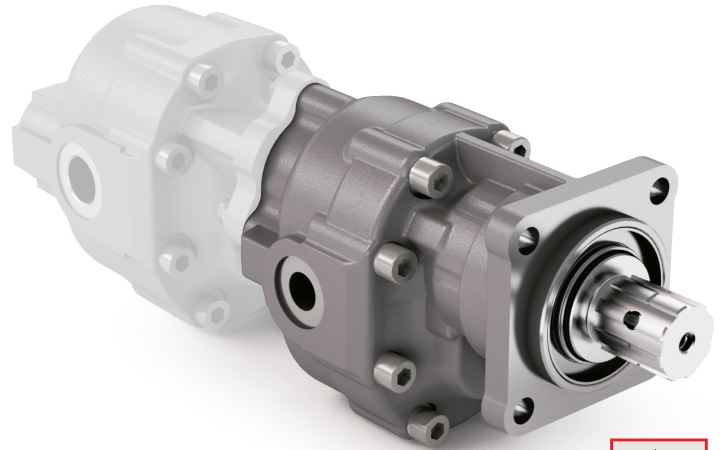


TANDEM DIN 5462 SE

CODICE DI ORDINAZIONE / ORDERING CODE

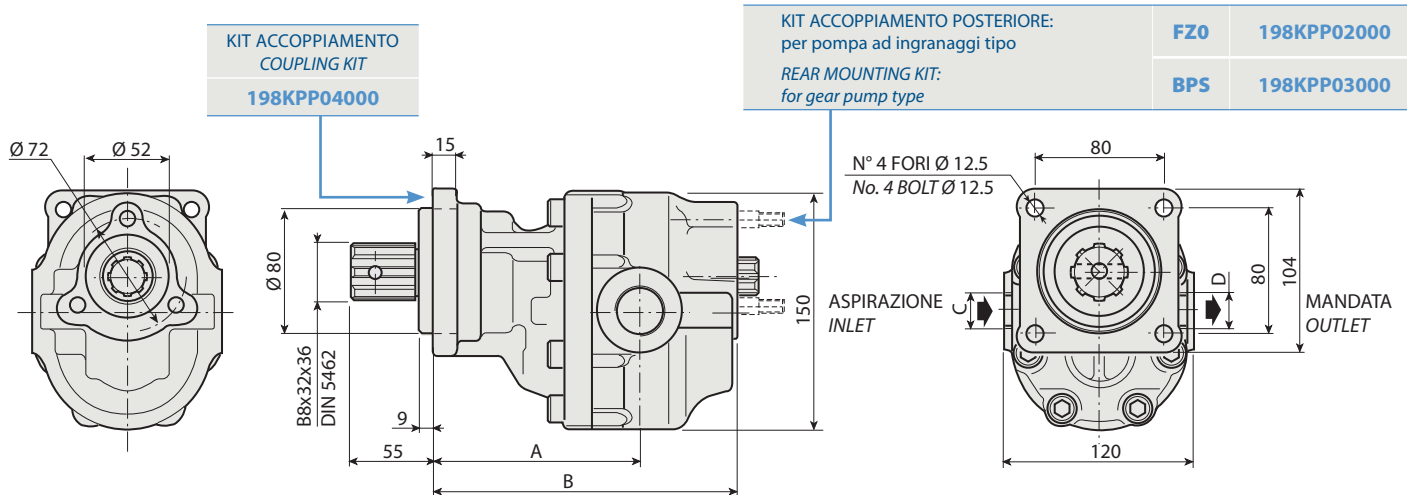
200 FZO XXX X V

DIN 5462 SE
 ROTAZIONE / ROTATION
D = DESTRO / CLOCKWISE
S = SINISTRO / ANTICLOCKWISE
 CILINDRATA / DISPLACEMENT
 TIPO / TYPE
 POMPA AD INGRANAGGI / GEAR PUMP



1

FZO 110 V



CARATTERISTICHE E DATI TECNICI / SPECIFICATIONS AND TECHNICAL DATA

TIPO TYPE	CODICE / CODE		CILINDRATA DISPLACEMENT	A mm	B mm	C ASPIRAZIONE INLET	D MANDATA OUTLET	PESO WEIGHT
	ROTAZIONE DESTRA CLOCKWISE ROT.	ROTAZIONE SINISTRA ANTICLOCKWISE ROT.	cm ³ /rev.					kg

FZO 110 V	200FZO110DV	200FZO110SV	105	164.5	233.5	1" ¼ G	1" G	16.4
------------------	--------------------	--------------------	------------	--------------	--------------	---------------	-------------	-------------

KIT RASAMENTI / THRUST PLATES KIT CODICE / CODE 20601800000

KIT GUARNIZIONI COMPLETO / COMPLETE SEALS KIT CODICE / CODE 21902200000

Per la scelta dei raccordi orientabili vedi pag. 212-213 / For the selection of adjustable fittings see page 212-213

- A richiesta possono essere fornite le pompe ad ingranaggi con le guarnizioni HNBR per climi freddi (-40 °C).
- On request our gear pumps may be supplied with HNBR seals for cold climates (-40 °C).

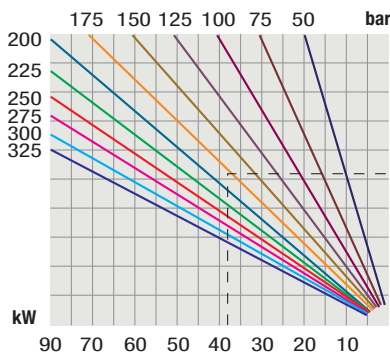
TANDEM DIN 5462 SE

TIPO / TYPE			
Cilindrata <i>Displacement</i>	Vg	cm ³ /n cm ³ /rev.	
Pressione massima continua <i>Max continuous operating pressure</i>	P1		
Pressione massima intermittente (max 30 s) <i>Max intermittent operating pressure</i>	P2	bar	
Pressione massima di picco (≤ 0.1 s) <i>Max peak pressure</i>	P3		
Velocità massima intermittente (P ≤ 20 bar) <i>Max intermittent speed</i>	n3		
Velocità massima continua (≤ P1) <i>Max continuous speed</i>	n1	n/min r.p.m.	
Velocità minima intermittente (≤ P2 x 0.5) (max 30 s) <i>Min intermittent speed</i>	n4		

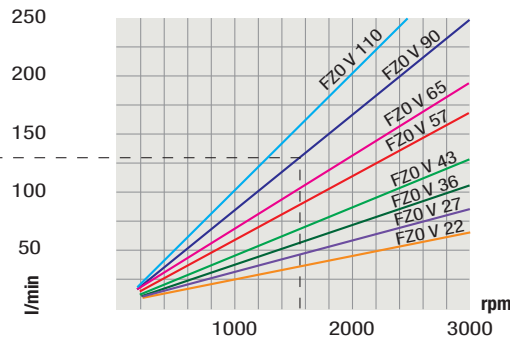
FZO 110 V
105
180
200
250
3000
1500
300

DIAGRAMMI / DIAGRAMS

POTENZA ASSORBITA
POWER INPUT



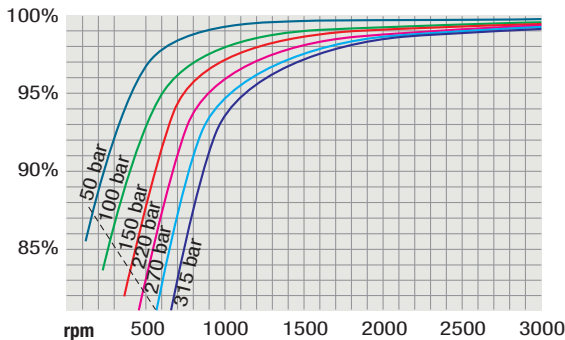
PORTATA
CAPACITY



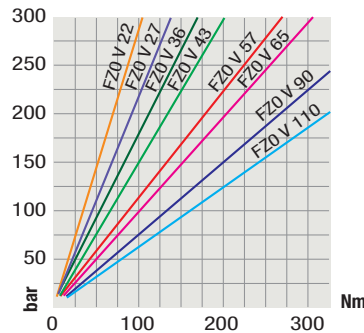
RILIEVI ESEGUITI CON OLIO ISO VG 46
A 50° C ($\nu = 30$ cSt)

THE ABOVE SPECIFICATIONS REFER TO OIL
TYPE ISO VG 46 AT 50° C ($\nu = 30$ cSt)

RENDIMENTO VOLUMETRICO
VOLUMETRIC EFFICIENCY



COPPIA ASSORBITA
DRIVE TORQUE



Verificare, nel caso vi sia l'utilizzo contemporaneo delle due pompe, che la coppia sull'albero in uscita non superi i 270 Nm.

In case of simultaneous use of both pumps, make sure that the torque on output shaft does not exceed 270 Nm.