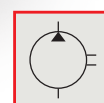
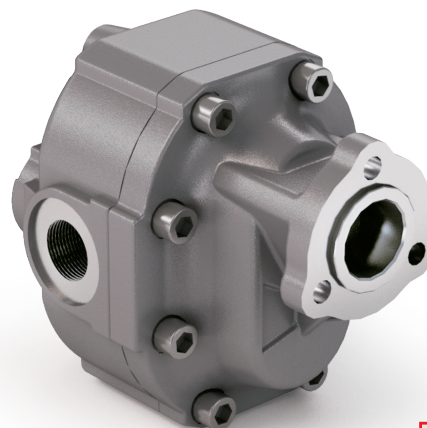


21 UNI 222

CODICE DI ORDINAZIONE / ORDERING CODE

200 FZH XXX X 0

TIPO / TYPE
 POMPA AD INGRANAGGI / GEAR PUMP
 CILINDRATA / DISPLACEMENT
 21 UNI 222
 ROTAZIONE / ROTATION
D = DESTRO / CLOCKWISE
S = SINISTRO / ANTICLOCKWISE

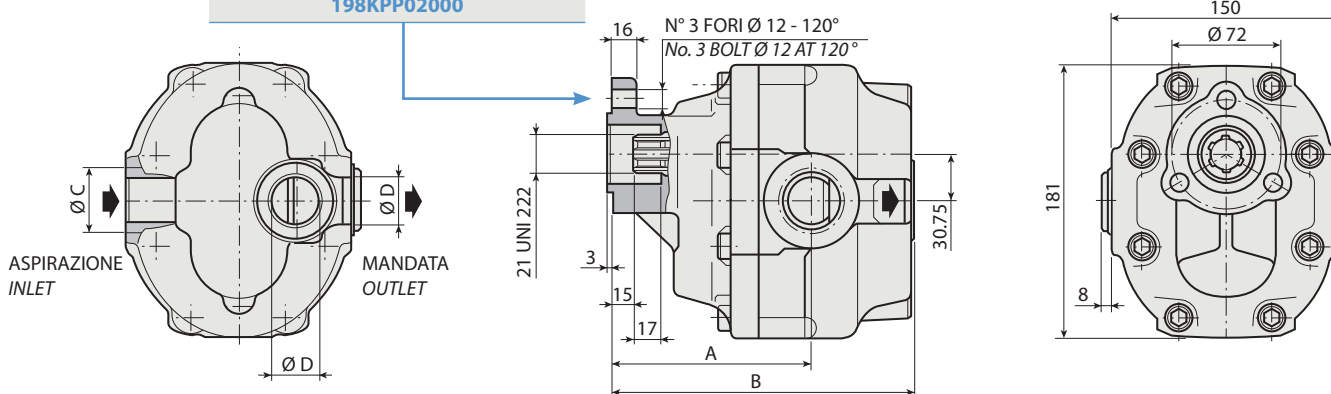


1

FZH 100

KIT ACCOPPIAMENTO POMPA UNI/PTO UNI
COUPLING KIT UNI PUMP/UNI PTO

198KPP02000



CARATTERISTICHE E DATI TECNICI / SPECIFICATIONS AND TECHNICAL DATA

TIPO TYPE	CODICE / CODE		CILINDRATA DISPLACEMENT cm ³ /rev.	A mm	B mm	C ASPIRAZIONE INLET	D MANDATA OUTLET	PESO WEIGHT kg
	ROTAZIONE DESTRA CLOCKWISE ROT.	ROTAZIONE SINISTRA ANTICLOCKWISE ROT.						

FZH 100	200FZH100D0	200FZH100S0	100	139	204	1" 1/4 G	1" G	18.1
----------------	--------------------	--------------------	------------	------------	------------	-----------------	-------------	-------------

KIT RASAMENTI / THRUST PLATES KIT CODICE / CODE 2H451075000

KIT GUARNIZIONI COMPLETO / COMPLETE SEALS KIT CODICE / CODE 21901400000

Per la scelta dei raccordi orientabili vedi pag. 212-213 / For the selection of adjustable fittings see page 212-213

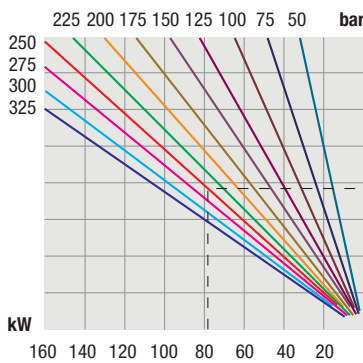
- A richiesta possono essere fornite le pompe ad ingranaggi con le guarnizioni HNBR per climi freddi (-40 °C).
- On request our gear pumps may be supplied with HNBR seals for cold climates (-40 °C).

TIPO / TYPE			FZH 100
Cilindrata <i>Displacement</i>	Vg	cm ³ /n cm ³ /rev.	100
Pressione massima continua <i>Max continuous operating pressure</i>	P1		250
Pressione massima intermittente <i>Max intermittent operating pressure</i>	(max 30 s) P2	bar	270
Pressione massima di picco <i>Max peak pressure</i>	(≤ 0.1 s) P3		375
Velocità massima intermittente <i>Max intermittent speed</i>	(P ≤ 20 bar) n3		3500
Velocità massima continua <i>Max continuous speed</i>	(≤ P1) n1	n/min r.p.m.	1500
Velocità minima intermittente <i>Min intermittent speed</i>	(≤ P2 x 0.5) (max 30 s) n4		250

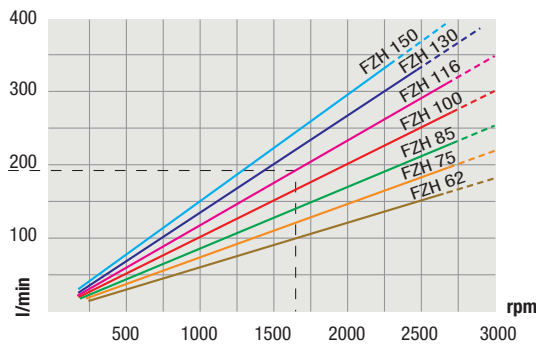
1

DIAGRAMMI / DIAGRAMS

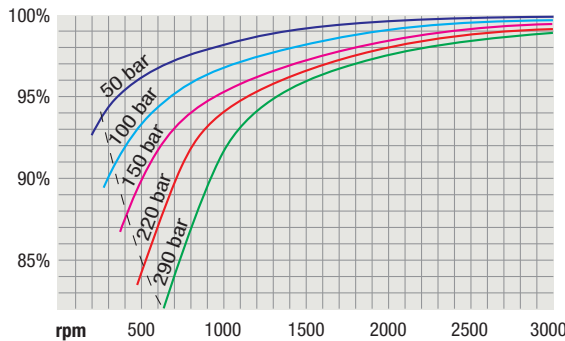
**POTENZA ASSORBITA
POWER INPUT**



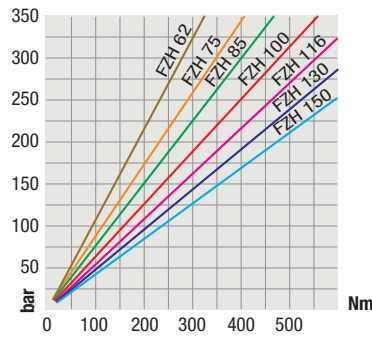
**PORTATA
CAPACITY**



**RENDIMENTO VOLUMETRICO
VOLUMETRIC EFFICIENCY**



**COPPIA ASSORBITA
DRIVE TORQUE**



RILIEVI ESEGUITI CON OLIO ISO VG 46 A 50° C ($\nu = 30 \text{ cSt}$)
THE ABOVE SPECIFICATIONS REFER TO OIL TYPE ISO VG 46 AT 50° C ($\nu = 30 \text{ cSt}$)