

SERIE XBM

3.1.53.

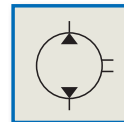
CODICE DI ORDINAZIONE / DECODING

3.1.53 . XXX . 0 . 0 . 0 . 0

DIN
5 4 6 2
SE

XBM 100

Pompa ad Ingranaggi
Gear Pump



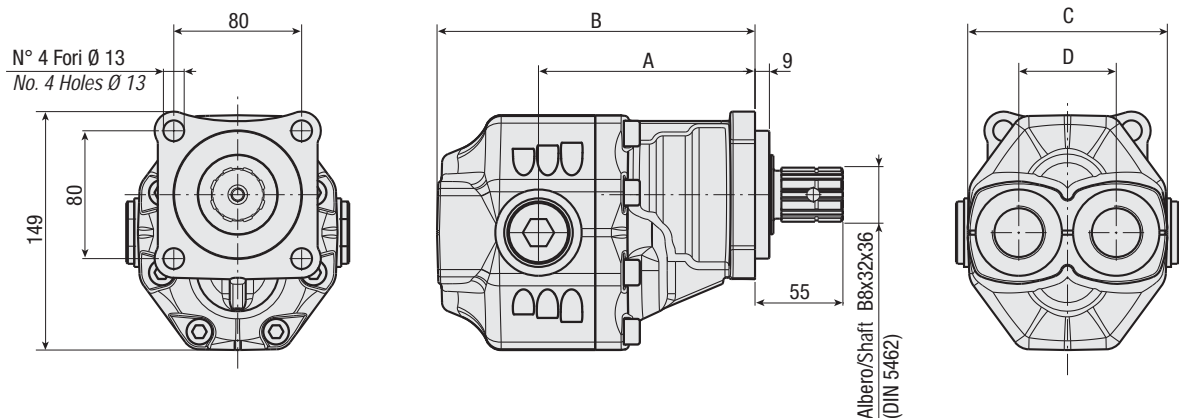
CILINDRATA/DISPLACEMENT

CODICE BASE/BASIC CODE

CARATTERISTICHE E DATI TECNICI / SPECIFICATIONS AND TECHNICAL DATA

TIPO TYPE	CODICE CODE	CILINDRATA DISPLACEMENT cm ³ /rev.	A mm	B mm	C mm	D mm	ASPIRAZIONE INLET	MANDATA OUTLET	PESO WEIGHT kg
--------------	----------------	---	---------	---------	---------	---------	----------------------	-------------------	----------------------

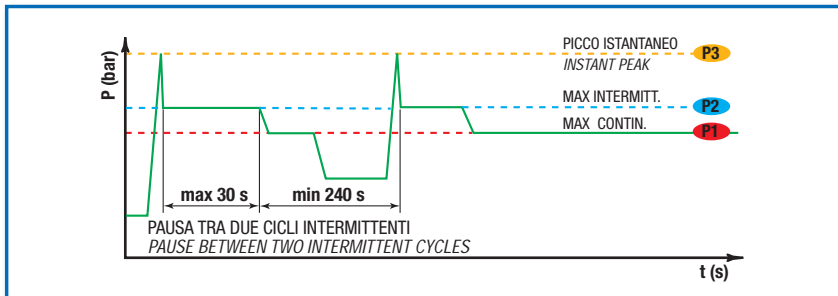
XBM 100	3.1.53.100.0.0.0.0	100	147	222	140	70	1" 1/4 G	1" 1/4 G	16,2
---------	--------------------	-----	-----	-----	-----	----	----------	----------	------



KIT RASAMENTI/THRUST PLATES KIT COD. 2.06.043.00000 KIT GUARNIZIONI COMPLETO/COMPLETE SEALS KIT COD. 2.19.042.00000

DATI TECNICI / TECHNICAL DATA

ESEMPIO CICLI LAVORO / EXAMPLE OF WORKING CYCLES



Pressione d'aspirazione: Inlet pressure:	0.7 ÷ 1.5 bar (assoluti/absolute)
Campo viscosità lavoro: Operating viscosity range:	12 ÷ 100 cSt
Temperatura fluido °C (t): Fluid temperature °C (t):	-10° + 80° C

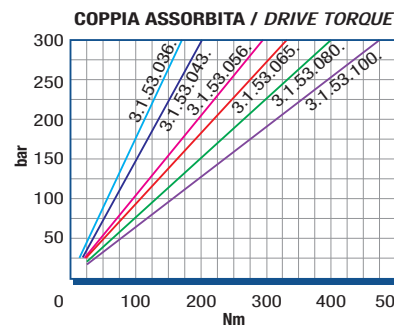
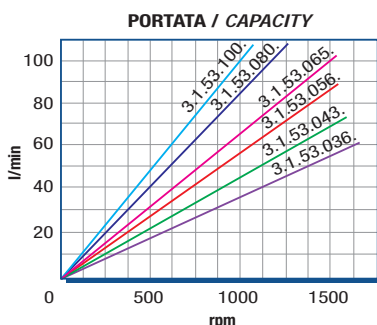
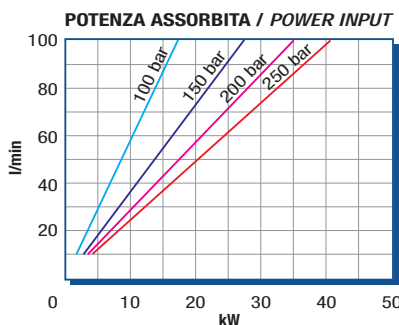
Pressione Lavoro Working Press. P2	Contaminazione / Contamination		Filtro / Filter βx = 75
	NAS 1638	ISO 4406	
≤ 200 bar	12	21/18	40 μm
≥ 200 bar	11	20/17	25 μm

◀ **FILTRAZIONE CONSIGLIATA (ritorno o mandata)**
RECOMMENDED FILTERING (return or outlet)

TIPO / TYPE									XBM100
Cilindrata Displacement	Vg	cm ³ /n cm ³ /rev.							100
Pressione massima continua Max continuous operating pressure	P1	bar							160
Pressione massima intermittente Max intermitt. operat. press.	(max 30 s) P2								180
Pressione massima di picco Max peak pressure	(≤ 0.1 s) P3								190
Velocità massima intermittente Max intermittent speed	(P ≤ 20 bar) n3	n/min r.p.m.							1700
Velocità massima continua Max continuous speed	(≤ P1) n1								1400
Velocità minima intermittente Min intermittent speed	(≤ P2 x 0.5) (max 30 s) n4								300

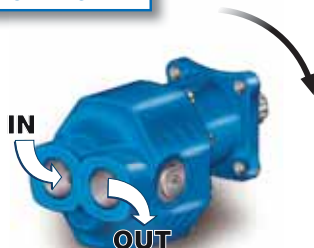
DIAGRAMMI / DIAGRAMS

RILIEVI ESEGUITI CON OLIO ISO VG 46 A 50° C (ν² = 30 cSt)
THE ABOVE SPECIFICATIONS REFER TO OIL TYPE ISO VG 46 AT 50° C (ν² = 30 cSt)



ROTAZIONE POMPA / PUMP ROTATION

**SINISTRA
ANTI-CLOCKWISE**



**DESTRA
CLOCKWISE**

