

# SERIE ISO

# 3.1.2.6.

CODICE DI ORDINAZIONE / DECODING

3.1.2.6 . XXX . X . 0 . X . 0

**DIN**  
5 4 6 2  
**SE**

ISO 100

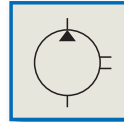
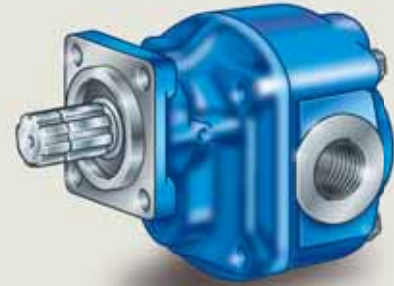
ALLESTIMENTI SPECIALI/SPECIAL OPTIONS  
 0 = NON RICHiesto/STANDARD OPTION  
 2 = ALBERO SUPPORTATO/BEARING GEAR  
 4 = ALBERO SUPPORTATO - MANDATA IN TESTA  
 BEARING GEAR - REAR OUTLET  
 7 = MANDATA IN TESTA/REAR OUTLET

ROTAZIONE/ROTATION  
 1 = SINISTRO/ANTICLOCKWISE  
 2 = DESTRO/CLOCKWISE

CILINDRATA/DISPLACEMENT

CODICE BASE/BASIC CODE

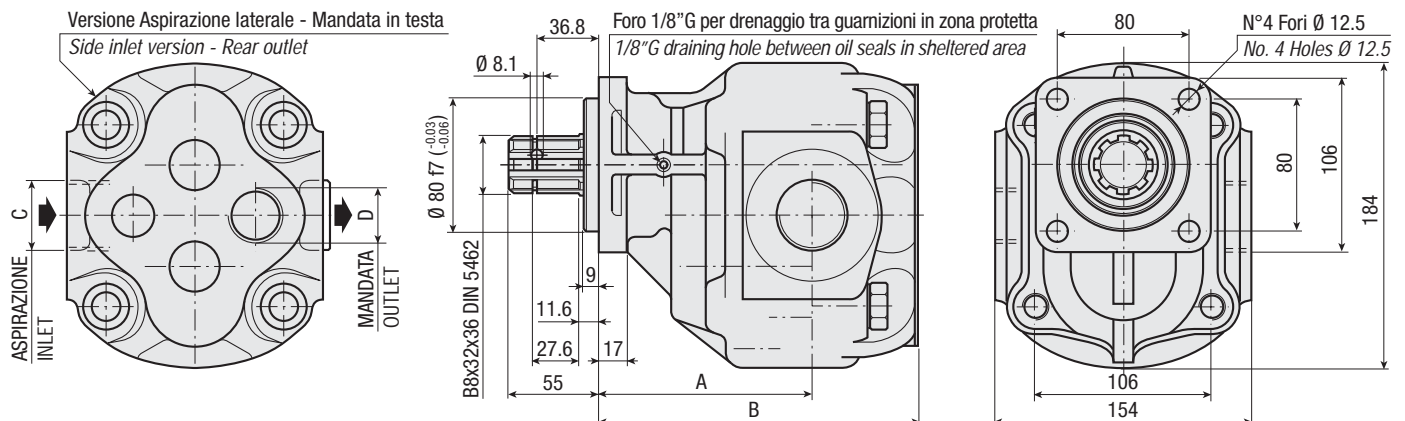
## Pompa ad Ingranaggi Gear Pump



### CARATTERISTICHE E DATI TECNICI / SPECIFICATIONS AND TECHNICAL DATA

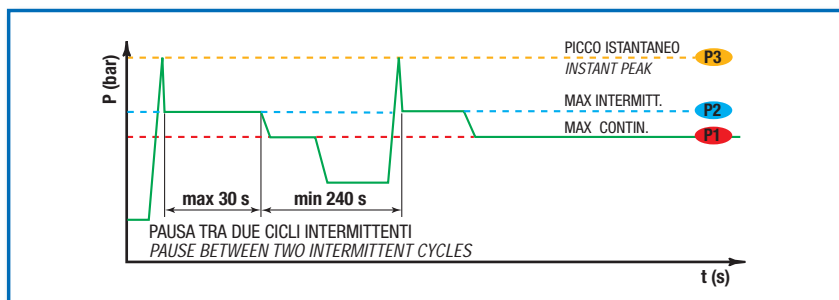
TIPO TYPE	CODICE CODE	CILINDRATA DISPLACEMENT cm <sup>3</sup> /rev.	A mm	B mm	C ASPIRAZIONE INLET	D MANDATA OUTLET	PESO WEIGHT kg
--------------	----------------	---	---------	---------	---------------------------	------------------------	----------------------

ISO 100	3.1.2.6.100.X.0.X.0	100	130	200	1" 1/4 G	1" G	22.8
---------	---------------------	-----	-----	-----	----------	------	------



**DATI TECNICI / TECHNICAL DATA**

**ESEMPIO CICLI LAVORO / EXAMPLE OF WORKING CYCLES**



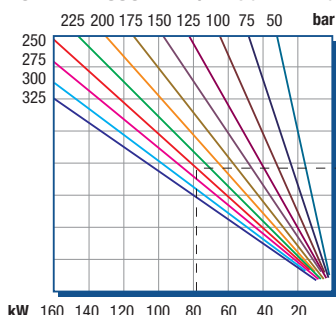
Pressione d'aspirazione: Inlet pressure:	0.7 ÷ 1.5 bar (assoluti/absolute)
Campo viscosità lavoro: Operating viscosity range:	12 ÷ 100 cSt
Temperatura fluido °C (t): Fluid temperature °C (t):	-10° + 80° C

Pressione Lavoro Working Press. P2	Contaminazione / Contamination		Filtro / Filter βx = 75
	NAS 1638	ISO 4406	
≤ 200 bar	12	21/18	40 μm
≥ 200 bar	11	20/17	25 μm

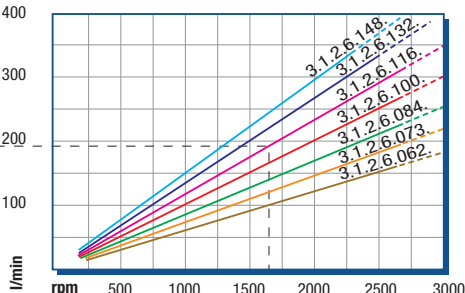
◀ **FILTRAZIONE CONSIGLIATA (ritorno o mandata)**  
**RECOMMENDED FILTERING (return or outlet)**

TIPO / TYPE	ISO 100			
	Vg	cm <sup>3</sup> /n cm <sup>3</sup> /rev.		
Cilindrata Displacement	Vg	cm <sup>3</sup> /n cm <sup>3</sup> /rev.		100
Pressione massima continua Max continuous operating pressure	P1			260
Pressione massima intermittente Max intermitt. operating pressure (max 30 s)	P2	bar		290
Pressione massima di picco Max peak pressure (≤ 0.1 s)	P3			375
Velocità massima intermittente Max intermittent speed (P ≤ 20 bar)	n3			3500
Velocità massima continua Max continuous speed (≤ P1)	n1	n/min r.p.m.		1500
Velocità minima intermittente Min intermittent speed (≤ P2 x 0.5) (max 30 s)	n4			250

**POTENZA ASSORBITA / ABSORBED POWER**



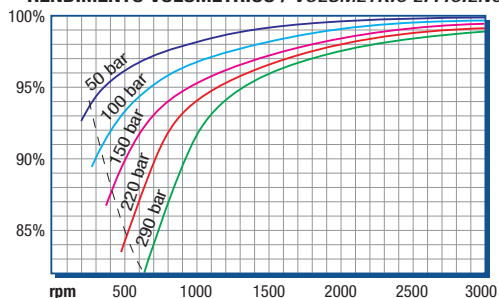
**PORTATA / CAPACITY**



RILIEVI ESEGUITI CON OLIO  
ISO VG 46 A 50° C (ν=30 cSt)  
THE ABOVE SPECIFICATIONS  
REFER TO OIL TYPE ISO  
VG 46 AT 50° C (ν=30 cSt)

**DIAGRAMMI / DIAGRAMS**

**RENDIMENTO VOLUMETRICO / VOLUMETRIC EFFICIENCY**



**COPPIA ASSORBITA / INPUT TORQUE**

