

SERIE P1-3F 3.1.6.6.

CODICE DI ORDINAZIONE / DECODING

3.1.6.6 . XXX . 1 . 0 . 00

UNI

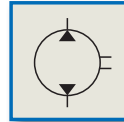
21-222 P1 90-3F

1 = UNI 3 FORI/3 HOLES UNI

CILINDRATA/DISPLACEMENT

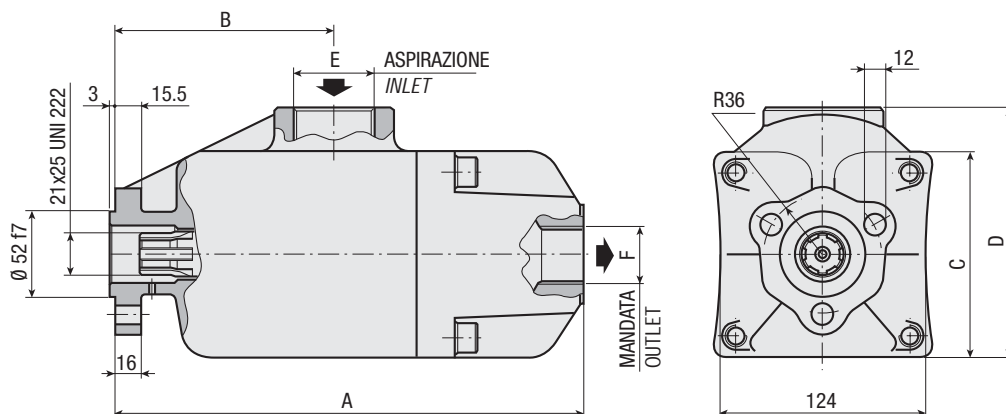
CODICE BASE/BASIC CODE

Pompa a Pistoni
Piston Pump



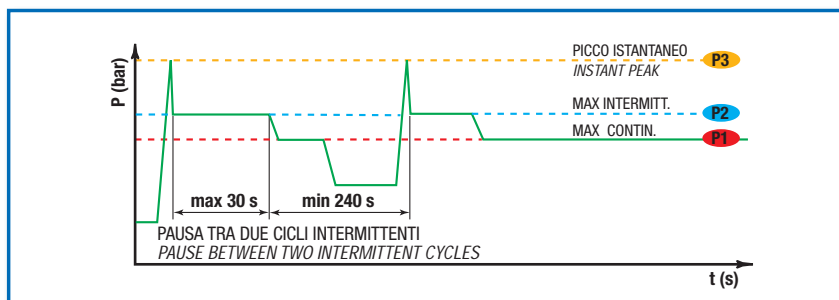
CARATTERISTICHE E DATI TECNICI / SPECIFICATIONS AND TECHNICAL DATA

TIPO TYPE	CODICE CODE	CILINDRATA DISPLACEMENT cm ³ /rev.	A mm	B mm	C mm	D mm	E ASPIRAZIONE INLET	F MANDATA OUTLET	PESO WEIGHT kg
P1 90-3F	3.1.6.6.090.1.0.00	90	282	132.5	124	150.5	1" 1/2 G	1" G	17.0



DATI TECNICI / TECHNICAL DATA

ESEMPIO CICLI LAVORO / EXAMPLE OF WORKING CYCLES



Pressione d'aspirazione: Inlet pressure:	0.7 ÷ 1.5 bar (assoluti/absolute)
Campo viscosità lavoro: Operating viscosity range:	12 ÷ 100 cSt
Temperatura fluido °C (t): Fluid temperature °C (t):	-10° + 80° C

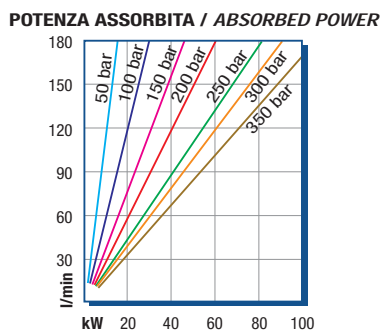
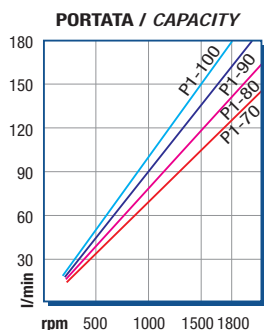
Pressione Lavoro Working Press. P2	Contaminazione / Contamination		Filtro / Filter βx = 75
	NAS 1638	ISO 4406	
≤ 200 bar	12	21/18	40 μm
≥ 200 bar	11	20/17	25 μm

◀ **FILTRAZIONE CONSIGLIATA (ritorno o mandata)**
RECOMMENDED FILTERING (return or outlet)

TIPO / TYPE			
Cilindrata Displacement		Vg	cm ³ /n cm ³ /rev.
Pressione massima continua Max continuous operating pressure		P1	bar
Pressione massima intermittente Max intermitt. operating pressure	(max 30 s)	P2	
Pressione massima di picco Max peak pressure	(≤ 0.1 s)	P3	
Velocità massima intermittente Max intermittent speed	(P ≤ 20 bar)	n3	n/min r.p.m.
Velocità massima continua Max continuous speed	(≤ P1)	n1	
Velocità minima intermittente Min intermittent speed	(≤ P2 x 0.5) (max 30 s)	n4	

P1 90-3F
90
300
350
400
2000
1600
400

DIAGRAMMI / DIAGRAMS



RILIEVI ESEGUITI CON OLIO
ISO VG 46 A 50° C (ν=30 cSt)
THE ABOVE SPECIFICATIONS
REFER TO OIL TYPE ISO
VG 46 AT 50° C (ν=30 cSt)