

SERIE P1-4D 3.1.6.6.

CODICE DI ORDINAZIONE / DECODING

3.1.6.6 . XXX . 2 . 0 . 00

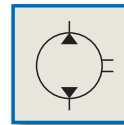
DIN P1 70-4D
5 4 6 2
SE

2 = DIN 4 FORI/4 HOLES DIN

CILINDRATA/DISPLACEMENT

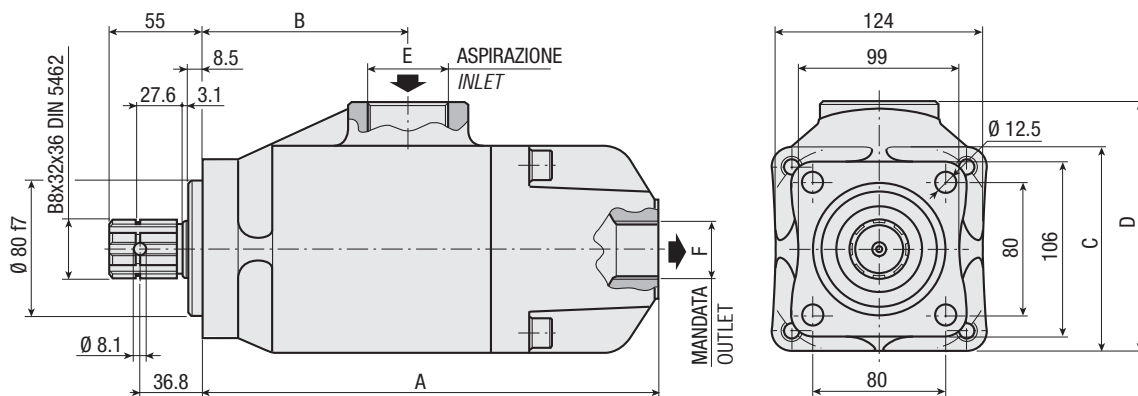
CODICE BASE/BASIC CODE

Pompa a Pistoni
Piston Pump



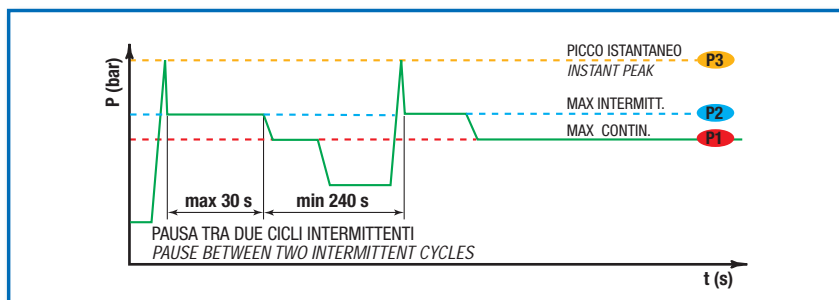
CARATTERISTICHE E DATI TECNICI / SPECIFICATIONS AND TECHNICAL DATA

| TIPO TYPE | CODICE CODE | CILINDRATA DISPLACEMENT cm ³ /rev. | A mm | B mm | C mm | D mm | E ASPIRAZIONE INLET | F MANDATA OUTLET | PESO WEIGHT kg |
|--------------|--------------------|---|---------|---------|---------|---------|---------------------------|------------------------|----------------------|
| P1 70-4D | 3.1.6.6.070.2.0.00 | 70 | 272 | 122.5 | 124 | 150.5 | 1" 1/2 G | 1" G | 17.5 |



DATI TECNICI / TECHNICAL DATA

ESEMPIO CICLI LAVORO / EXAMPLE OF WORKING CYCLES



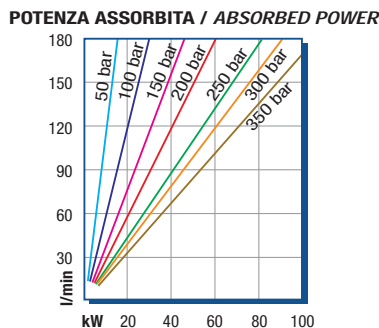
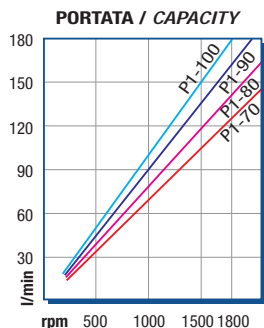
| | |
|---|--------------------------------------|
| Pressione d'aspirazione: Inlet pressure: | 0.7 ÷ 1.5 bar (assoluti/absolute) |
| Campo viscosità lavoro: Operating viscosity range: | 12 ÷ 100 cSt |
| Temperatura fluido °C (t): Fluid temperature °C (t): | -10° + 80° C |

| Pressione Lavoro Working Press. P2 | Contaminazione / Contamination | | Filtro / Filter βx = 75 |
|---------------------------------------|--------------------------------|----------|----------------------------|
| | NAS 1638 | ISO 4406 | |
| ≤ 200 bar | 12 | 21/18 | 40 μm |
| ≥ 200 bar | 11 | 20/17 | 25 μm |

◀ **FILTRAZIONE CONSIGLIATA (ritorno o mandata)**
RECOMMENDED FILTERING (return or outlet)

| TIPO / TYPE | | | P1 70-4D |
|--|----------------------------------|---|----------|
| Cilindrata Displacement | Vg | cm ³ /n cm ³ /rev. | 70 |
| Pressione massima continua Max continuous operating pressure | P1 | bar | 300 |
| Pressione massima intermittente Max intermitt. operating pressure | (max 30 s) P2 | | 350 |
| Pressione massima di picco Max peak pressure | (≤ 0.1 s) P3 | | 400 |
| Velocità massima intermittente Max intermittent speed | (P ≤ 20 bar) n3 | n/min r.p.m. | 2000 |
| Velocità massima continua Max continuous speed | (≤ P1) n1 | | 1600 |
| Velocità minima intermittente Min intermittent speed | (≤ P2 x 0.5) (max 30 s) n4 | | 400 |

DIAGRAMMI / DIAGRAMS



RILIEVI ESEGUITI CON OLIO
ISO VG 46 A 50° C (ν=30 cSt)
THE ABOVE SPECIFICATIONS
REFER TO OIL TYPE ISO
VG 46 AT 50° C (ν=30 cSt)

SERIE P1-4D 3.1.6.6.

POMPE A PISTONI PISTON PUMPS

