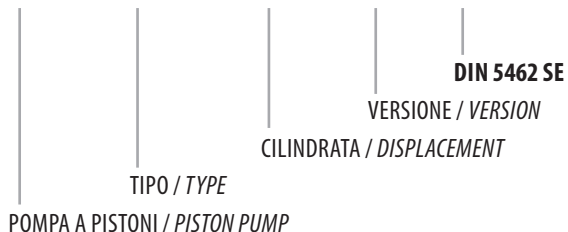


## DIN 5462 SE

CODICE DI ORDINAZIONE / ORDERING CODE

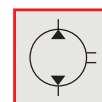
### 201 PE XXX Z SE



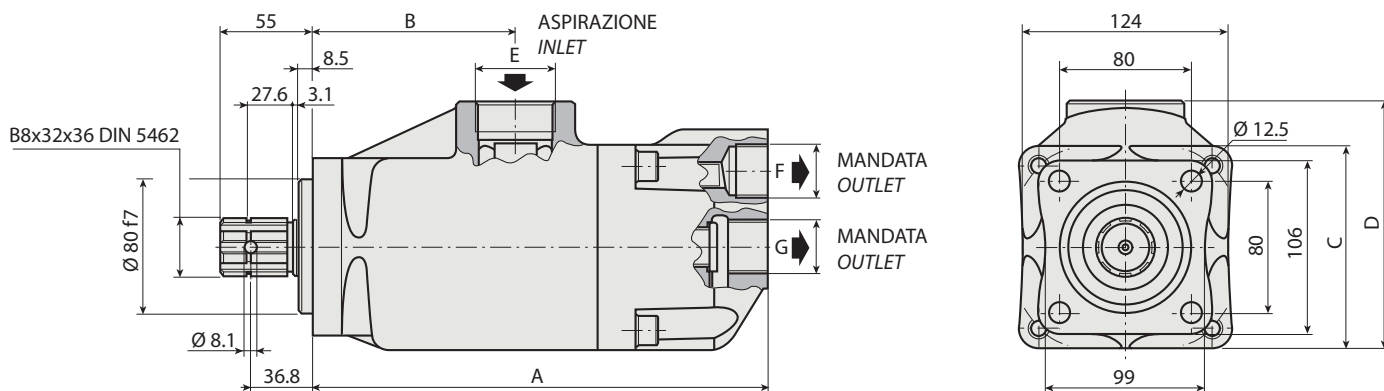
POMPA A PISTONI **DOPPIA PORTATA**  
**DUAL FLOW PISTON PUMP**

2

**BIDIREZIONALE**  
**BI-ROTATIONAL**



**PE 41+41**



### CARATTERISTICHE E DATI TECNICI / SPECIFICATIONS AND TECHNICAL DATA

TIPO TYPE	CODICE CODE	CILINDRATA DISPLACEMENT cm <sup>3</sup> /rev. G F	A mm	B mm	C mm	D mm	E ASPIRAZIONE INLET	F MANDATA OUTLET	G MANDATA OUTLET	PESO WEIGHT kg
<b>PE 41+41</b>	<b>201PE240ZSE</b>	<b>41 + 41</b>								
			276	122.5	124	150.5	1"½ G	1" G	1" G	17.7

Per la scelta dei raccordi orientabili vedi pag. 212-213 / For the selection of adjustable fittings see page 212-213

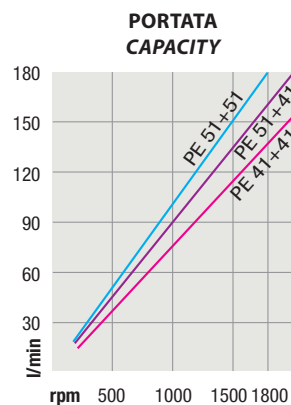
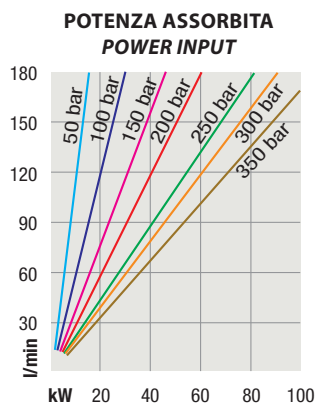
- A richiesta possono essere fornite le pompe a pistoni con le guarnizioni HNBR per climi freddi (-40 °C).
- On request our piston pumps may be supplied with HNBR seals for cold climates (-40 °C).

# DIN 5462 SE

2

TIPO / TYPE		PE 41+41	
Cilindrata <i>Displacement</i>	Vg	cm <sup>3</sup> /n cm <sup>3</sup> /rev.	41+41
Pressione massima continua <i>Max continuous operating pressure</i>	P1		300
Pressione massima intermittente <i>Max intermittent operating pressure</i>	(max 30 s) P2	bar	350
Pressione massima di picco <i>Max peak pressure</i>	(≤ 0.1 s) P3		400
Velocità massima intermittente <i>Max intermittent speed</i>	(P ≤ 20 bar) n3		2000
Velocità massima continua <i>Max continuous speed</i>	(≤ P1) n1	n/min r.p.m.	1600
Velocità minima intermittente <i>Min intermittent speed</i>	(≤ P2 x 0.5) (max 30 s) n4		400

## DIAGRAMMI / DIAGRAMS



RILIEVI ESEGUITI CON OLIO ISO VG 46 A 50° C ( $\nu = 30 \text{ cSt}$ )  
THE ABOVE SPECIFICATIONS REFER TO OIL TYPE ISO VG 46 AT 50° C ( $\nu = 30 \text{ cSt}$ )