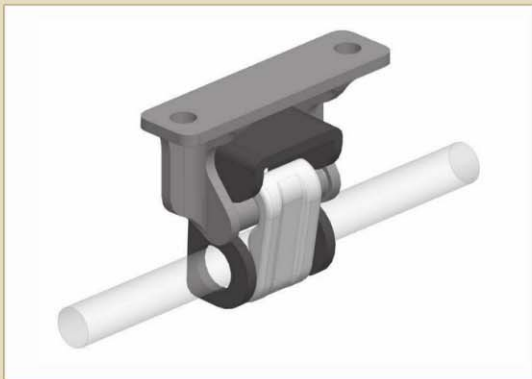


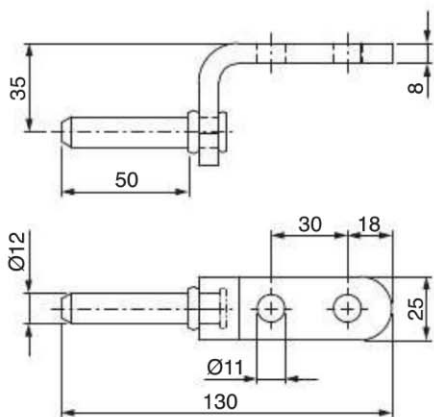
CERNIERE PERNI E ACCESSORI PER SPONDE IN ALLUMINIO • *HINGES PINS AND FITTINGS FOR ALUMINIUM SIDEBOARDS*



SCHEMA CERNIERA - HINGE LAYOUT



PERNO RIBATTUTO ZINCATO Ø12
ZINC PLATED PIN Ø12



COD.

Kg.

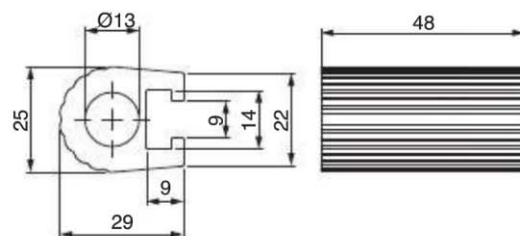
080507.01

0.200

080507.37 (Geomet)

0.200

CERNIERA IN ALLUMINIO ANODIZZATO
ANODISED ALUMINIUM HINGE



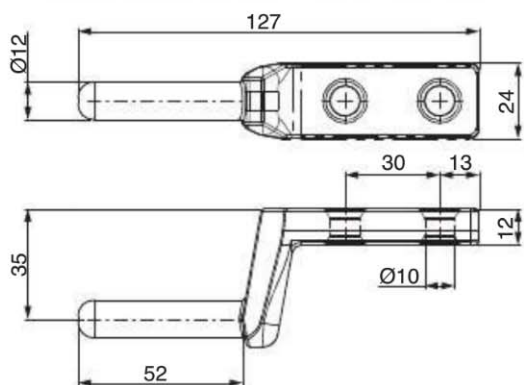
COD.

Kg.

080504.00

0.052

PERNO FORGIATO ZINCATO Ø12 - ZINC PLATED FORGED PIN Ø12



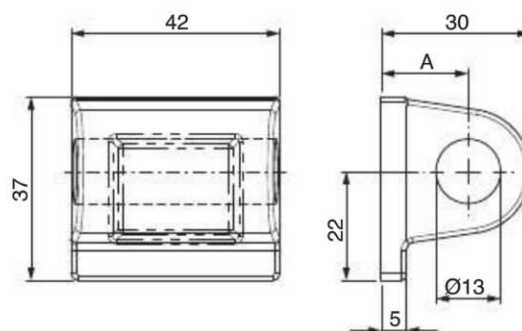
COD.

Kg.

080510.01

0.200

CERNIERA A SALDARE - HINGE



COD.

A

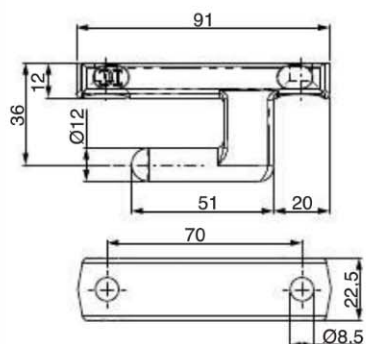
Kg.

F80511.00**15,5**

0.190

F80736.00**17.5**

0.200

PERNO TIR LEGGERO ZINCATO
ZINC PLATED LIGHT TIR PIN

COD.

Kg.

080865.01

0.250

080.055.00.00

0.250

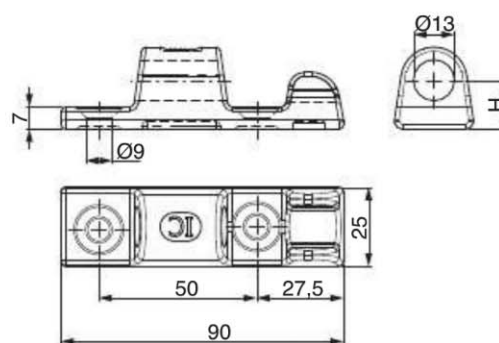
080.055.00.EC

0.250

142603.30**Inox Brill - Polished S.S.**

0.240

CERNIERA TIR LEGGERA - LIGHT TIR HINGE



COD.

ZINCATA
ZINC PLATEDCON LOGO
WITH LOGOFORATA
WITH HOLE

H

Kg.

080867.00

-

✓

-

15.5

0.180

080867.01

✓

✓

✓

15.5

0.170

080.316.00.EC

✓

-

✓

15.5

0.180

142604.30 Inox
Polished Stainless Steel

-

✓

✓

15.5

0.170

080801.01*

✓

-

✓

20.0

0.220

080.054.00.00

-

-

-

20.0

0.180

080.054.00.EC

-

-

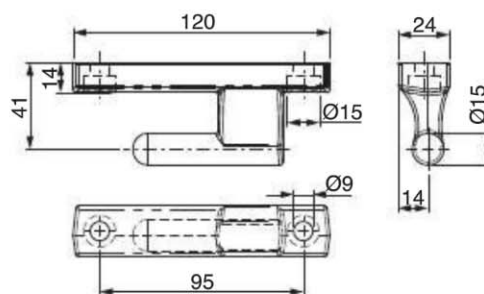
-

20.0

0.190

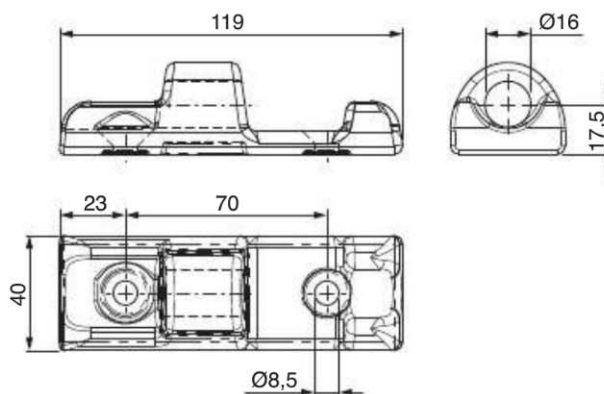
*Ad esaurimento - Until stock runs out

PERNO TIR PESANTE ZINCATO - ZINC PLATED HEAVY TIR PIN



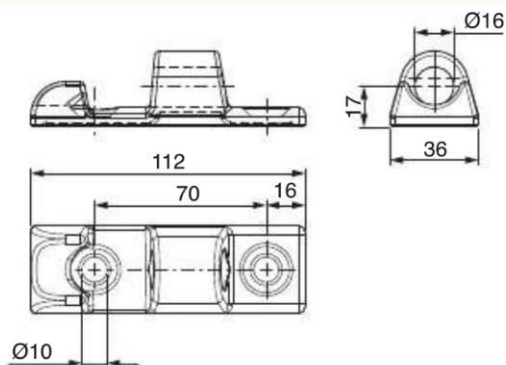
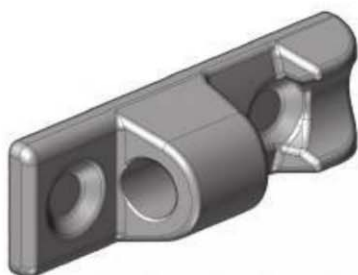
COD.	Kg.
081282.01	0.430
142601.30 INOX - Polished Stainless Steel	0.430

CERNIERA TIR PESANTE - HEAVY TIR HINGE



COD.	DESCRIZIONE - DESCRIPTION	Kg.
081283.00	GREZZA SENZA FORI Ø8.5- RAW WITHOUT HOLES Ø8.5	0.430
081283.01	ZINCATA 2 FORI Ø8.5 - ZINC PLATED 2 HOLES Ø8.5	0.420
142600.30	INOX BRILL 2 FORI Ø8.5 - POLISHED STAINLESS STEEL, 2 HOLES Ø8.5	0.350

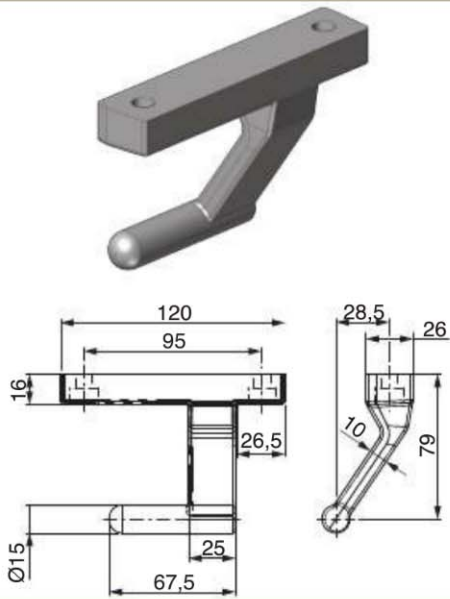
CERNIERA TIR MEDIA SENZA FORI - MEDIUM TIR HINGE NO HOLES



COD.	Kg.
080518.00	0.250

*Ad esaurimento - Until stock runs out

PERNO TIR ALTO ZINCATO - HIGH TIR ZINC PLATED PIN



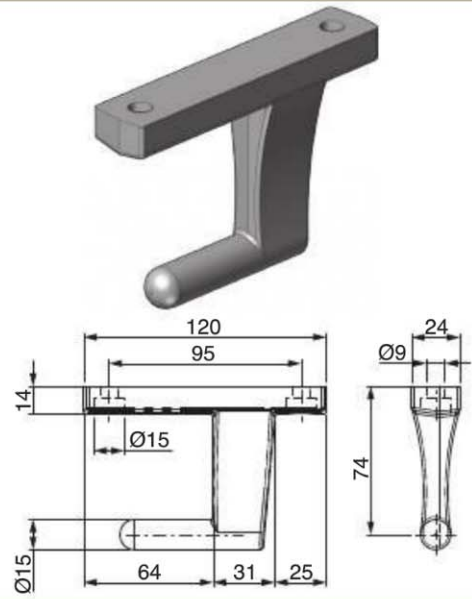
COD.

080733.01*

Kg.

0.566

PERNO TIR ALTO ZINCATO - HIGH TIR ZINC PLATED PIN



COD.

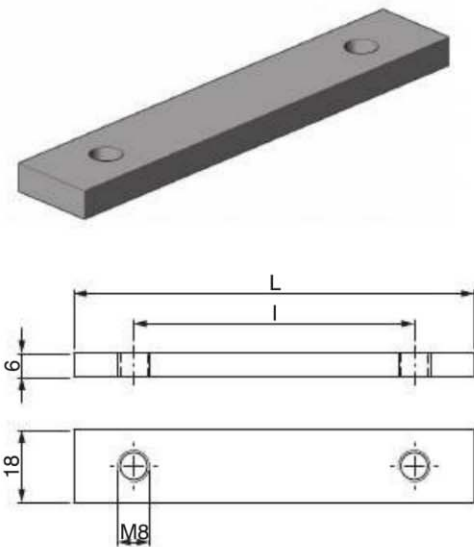
080662.01

Kg.

0.530

*Ad esaurimento - Until stock runs out

PIASTRINE ZINCATE - ZINC PLATED PLATES



COD.

080.015.00.00

L

I

Kg.

52

25

0.035

080512.01

55

30

0.042

081180.01

80

50

0.060

080769.01

85

62

0.067

080568.01

100

70

0.078

080604.01

100

75

0.078

080767.01

120

55

0.100

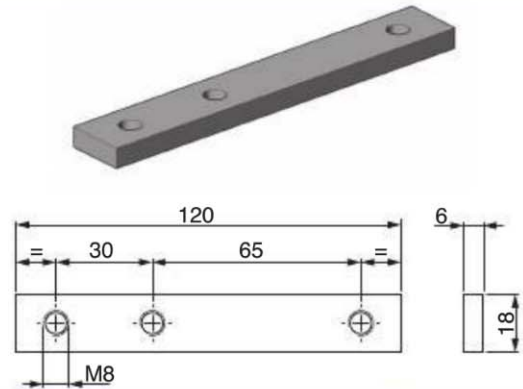
080515.01

120

95

0.094

PIASTRINA ZINCATA 3 FORI - ZINC PLATED 3 HOLES PLATE



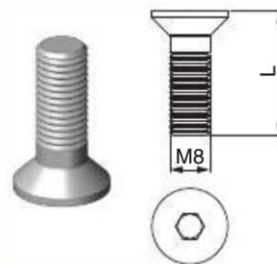
COD.

080.019.00.00

Kg.

0.095

VITE TCEI UNI 5933 ZINCATA M8
ZINC PLATED SCREW UNI 5933 M8



COD.

080.041.00.20

L

Kg.

20

0.008

080597.01

25

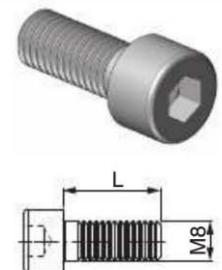
0.010

080598.01

30

0.012

VITE TSPEI UNI 5931 ZINCATA M8
ZINC PLATED SCREW UNI 5931 M8



COD.

080763.01

L

Kg.

16

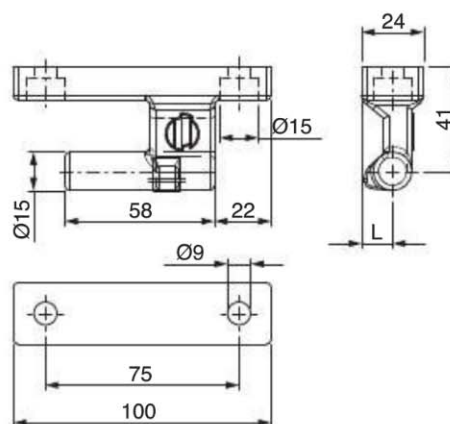
0.011

080566.01

20

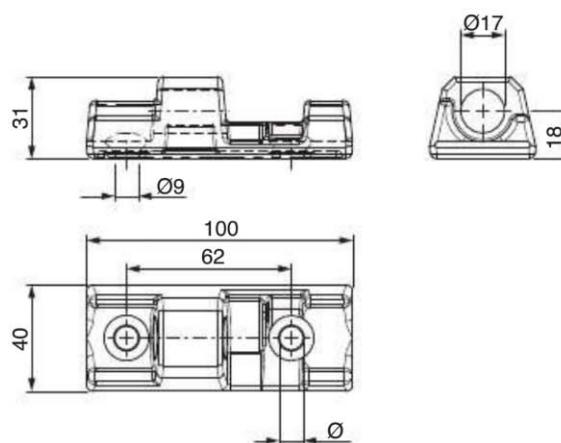
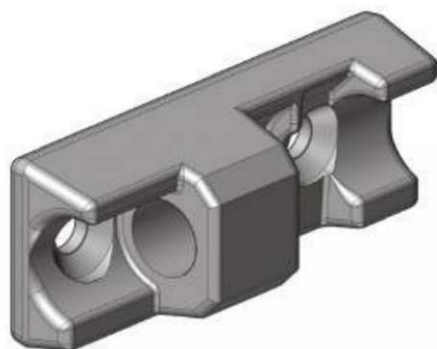
0.013

PERNO TIR 95 ANTICADUTA - TIR 95 PIN



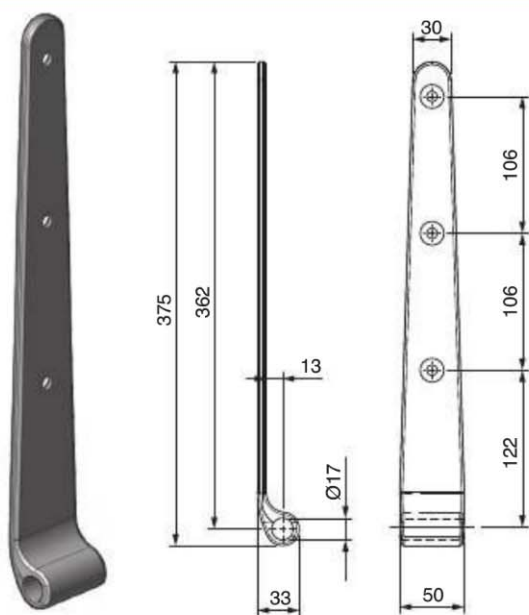
COD.	TRATTAMENTO SUPERFICIALE TREATMENT	DESCRIZIONE DESCRIPTION	L (mm)	Kg.
080774.01	ZINCATURA - ZINC PLATING	PER SPONDE CON GUARNIZIONE FOR SIDEBOARDS WITH SEAL	12	0.340
080774.37	GEOMET	PER SPONDE CON GUARNIZIONE FOR SIDEBOARDS WITH SEAL	12	0.340
142774.00 INOX - Stainless Steel	/	PER SPONDE CON GUARNIZIONE FOR SIDEBOARDS WITH SEAL	12	0.340
142774.30 INOX - Stainless Steel	BRILLANTATURA - POLISHING	PER SPONDE CON GUARNIZIONE FOR SIDEBOARDS WITH SEAL	12	0.340
080776.01	ZINCATURA - ZINC PLATING	PER SPONDE SENZA GUARNIZIONE FOR SIDEBOARDS WITHOUT SEAL	14	0.350
080776.37	GEOMET	PER SPONDE SENZA GUARNIZIONE FOR SIDEBOARDS WITHOUT SEAL	14	0.350

CERNIERA TIR 95 ANTICADUTA - TIR 95 HINGE

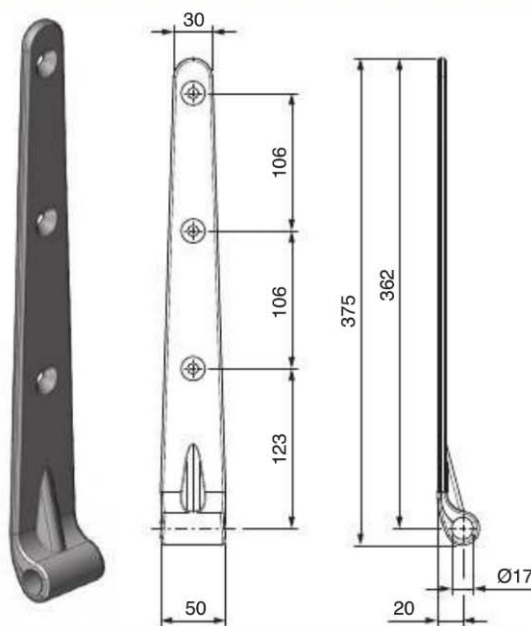


COD.	TRATTAMENTO SUPERFICIALE TREATMENT	Ø (mm)	Kg.
080775.00	/	/	0.300
080779.01	ZINCATURA - ZINC PLATING	8.5	0.350
080779.37	GEOMET	8.5	0.350
142775.00 INOX - Stainless Steel	/	8.5	0.350
142775.30 INOX - Stainless Steel	BRILLANTATURA - POLISHING	8.5	0.350

CERNIERA SPONDA POSTERIORE - REAR DOOR HINGE

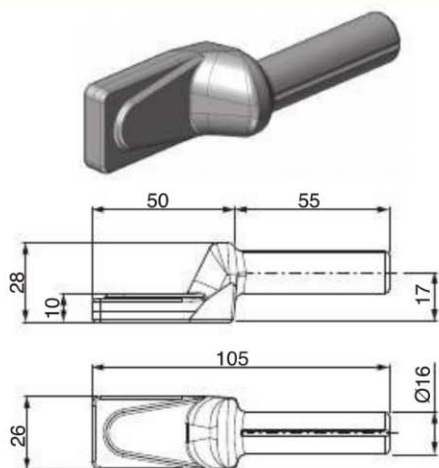


COD.	DESCRIZIONE - DESCRIPTION	Kg.
080700.11	GREZZA SENZA FORI RAW NO HOLES	0.880
080700.01	ZINCATA CON FORI ZINC PLATED WITH HOLES	0.830

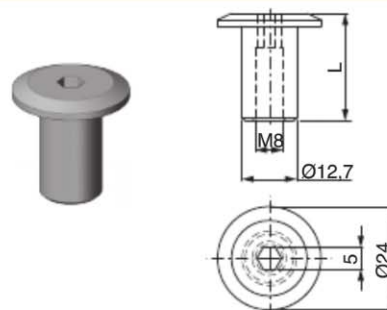
CERNIERA SPONDA POSTERIORE RINFORZATA
REINFORCED REAR DOOR HINGE

COD.	Kg.
080701.01*	0.860

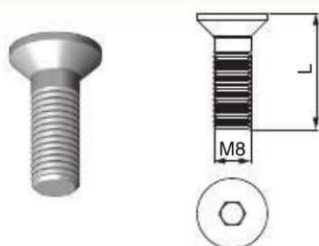
*Ad esaurimento - Until stock runs out

PERNO Ø16 PER CERNIERE POSTERIORI
Ø16 PIN FOR REAR DOOR HINGES

COD.	Kg.
010.099.00.00	0.200

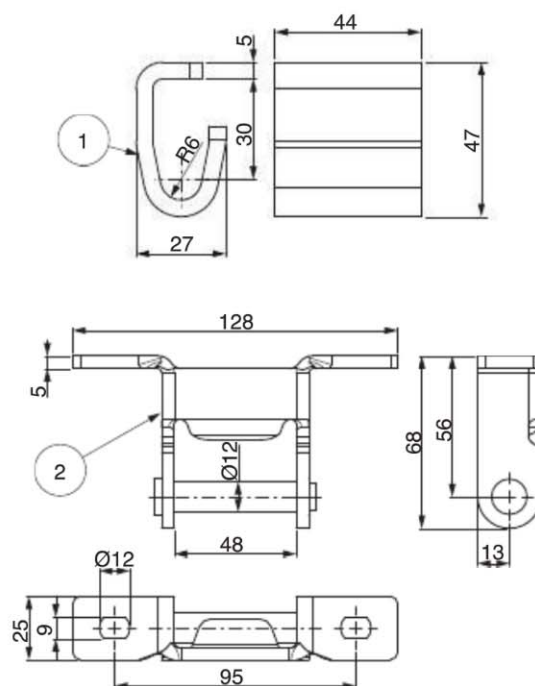
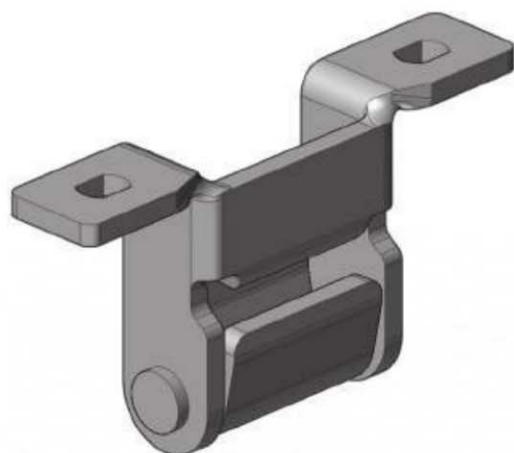
BUSSOLA PER FISSAGGIO CERNIERA DOPPIA APERTURA
FASTENERS FOR HINGE

COD.	DESCRIZIONE - DESCRIPTION	Kg.
080594.00	BUSSOLA IN ALLUMINIO L=25 L=25 ALU THREADED BUSH	0.010
080595.00	BUSSOLA IN ALLUMINIO L=30 L=30 ALU THREADED BUSH	0.015
080593.01	BUSSOLA IN ACCIAIO ZINCATO L=25 L=25 ZINC PLATED THREADED BUSH	0.030
080596.01	BUSSOLA IN ACCIAIO ZINCATO L=30 L=30 ZINC PLATED THREADED BUSH	0.035

VITE PER FISSAGGIO CERNIERA DOPPIA APERTURA
FASTENERS FOR HINGE

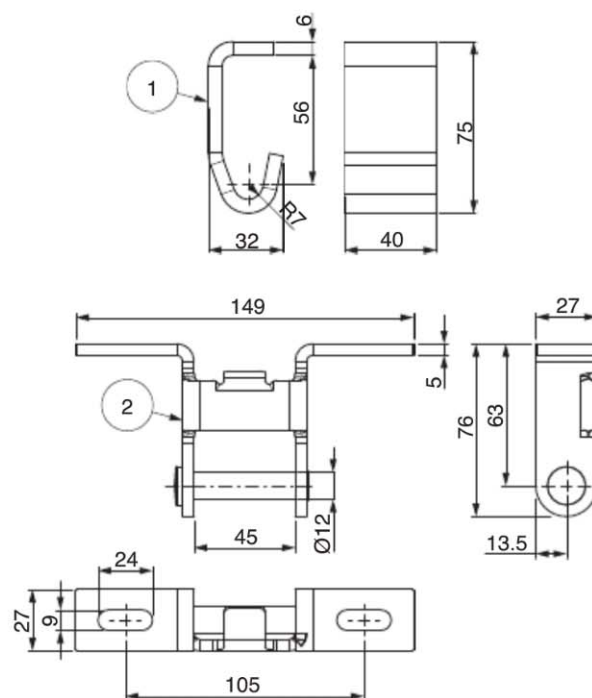
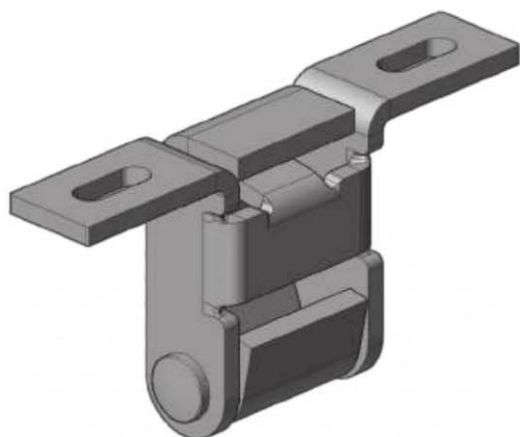
COD.	DESCRIZIONE - DESCRIPTION	Kg.
080597.01	VITE SPEI UNI 5933 M8X25 ZINCATA ZINC PLATED SCREW UNI 5933 M8X25	0.050
080598.01	VITE SPEI UNI 5933 M8X30 ZINCATA ZINC PLATED SCREW UNI 5933 M8X30	0.060

SUPPORTO E CERNIERA TIPO RAPID - RAPID HINGE AND SUPPORT



	COD.	Kg.
1	080563.00 (Grezzo - Raw)	0.148
2	080562.01 (Zincata - Zinc plated)	0.254

SUPPORTO E CERNIERA - HINGE AND SUPPORT

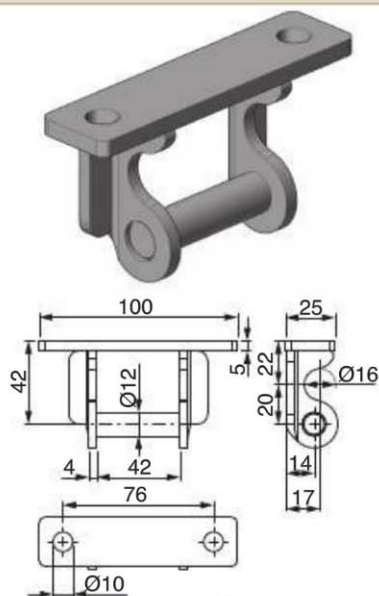


	COD.	Kg.
1	080795.00 (Grezzo - Raw)	0.224
2	080794.01 (Zincata - Zinc plated)	0.314

SCHEMA - LAYOUT



CERNIERA SPONDA ZINCATA - ZINC PLATED HINGE



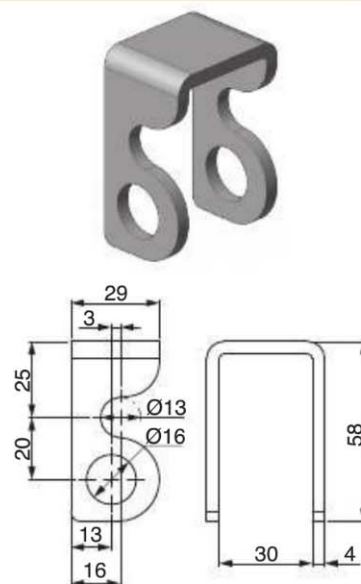
COD.

080601.01

Kg.

0.212

SUPPORTO BARRA - SUPPORT



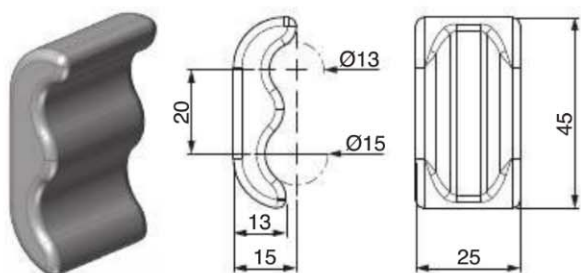
COD.

080602.00

Kg.

0.090

PALETTA - LOCKING PLATE



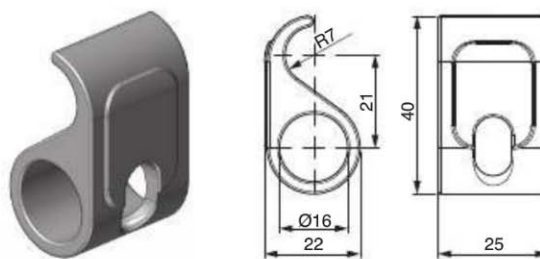
COD.

081236.00

Kg.

0.054

PALETTA IN FUSIONE - LOCKING PLATE



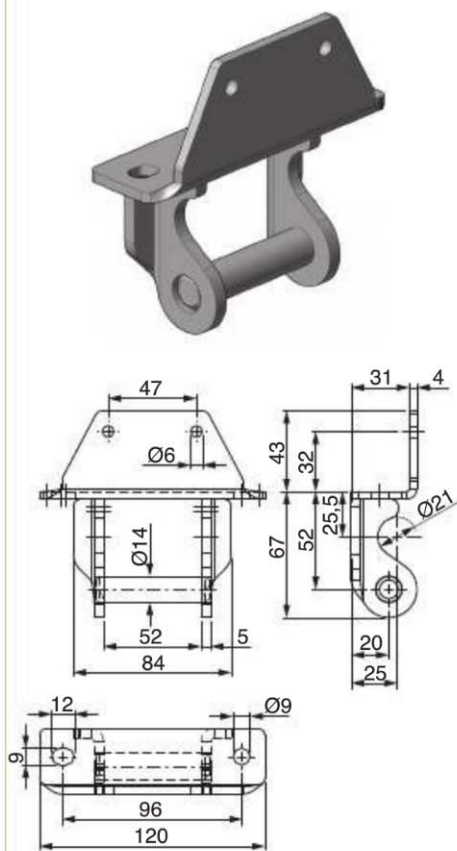
COD.

080.558.00.00

Kg.

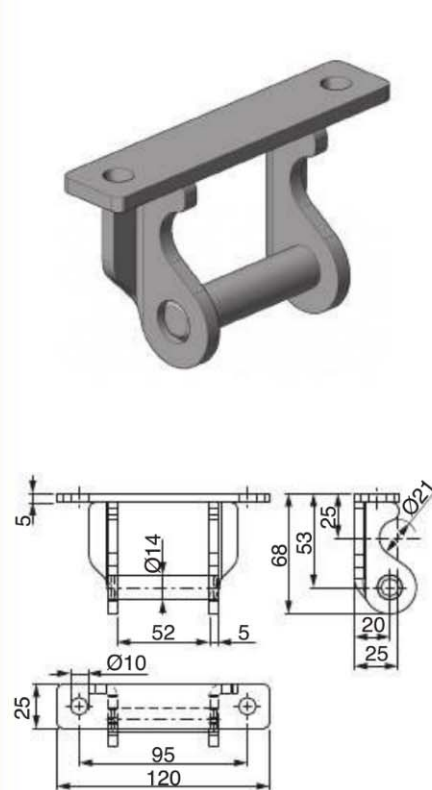
0.050

CERNIERA ZINCATA SPONDA 30mm
ZINC PLATED HINGE FOR 30MM SIDEBOARDS



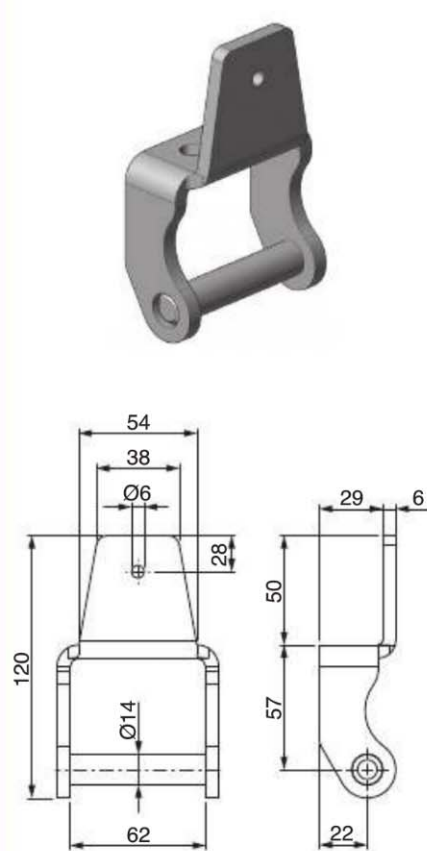
COD.	Kg.
080529.01	0.432

CERNIERA ZINCATA SPONDA 25mm
ZINC PLATED HINGE FOR 25MM SIDEBOARDS



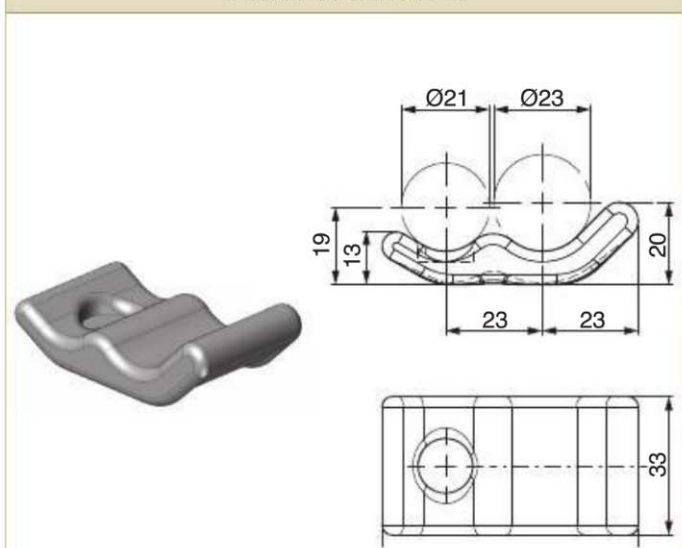
COD.	Kg.
080525.01	0.332

CERNIERA PER TR5 ZINCATA
ZINC PLATED TR5 HINGE



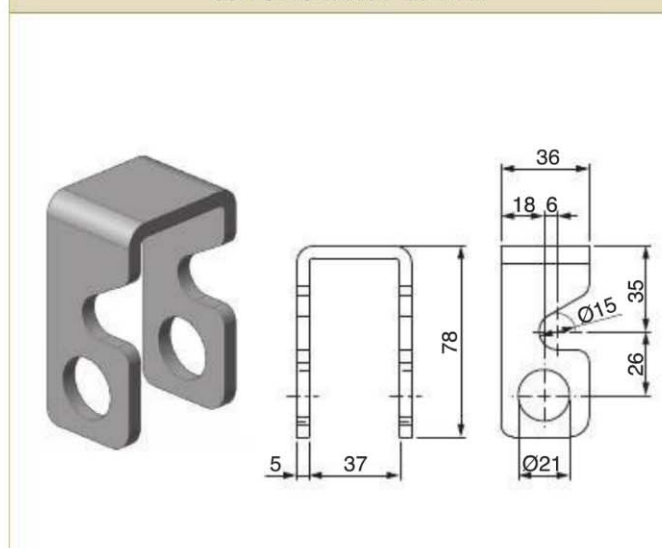
COD.	Kg.
080.013.00.00	0.300

PALETTA - LOCKING PLATE



COD.	Kg.
080534.00	0.120

SUPPORTO BARRA - SUPPORT



COD.	Kg.
080530.00	0.216

SUPPORTI BARRA
SUPPORT

COD.	Kg.
080.585.00.00	0.120

PALETTA A TIRARE
LOCKING PLATE

COD.	Kg.
080.587.00.EC	0.060

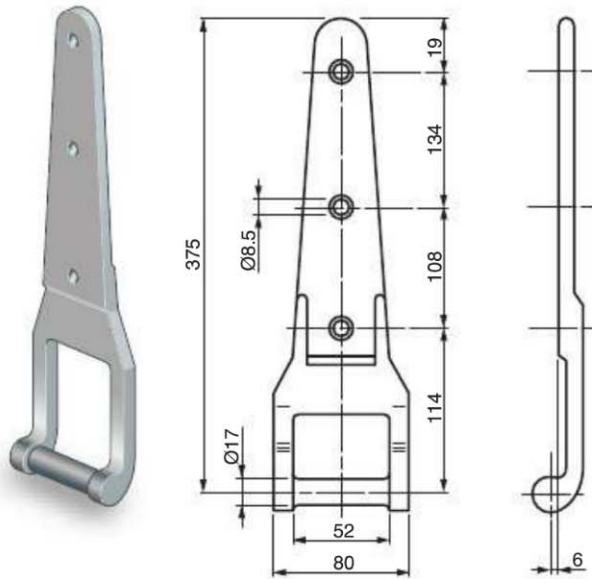
SUPPORTO SINGOLO
SINGLE SUPPORT

COD.	Kg.
080.586.00.00	0.090

CERNIERA E SUPPORTO ZINCATI - ZINC-PLATED SUPPORT AND HINGE

	COD.	Kg.
1	080.669.00.00	0.200
2	080.668.00.00	0.300

CERNIERA 3 FORI ZINCATA - 3 HOLES ZINC PLATED HINGE



COD.

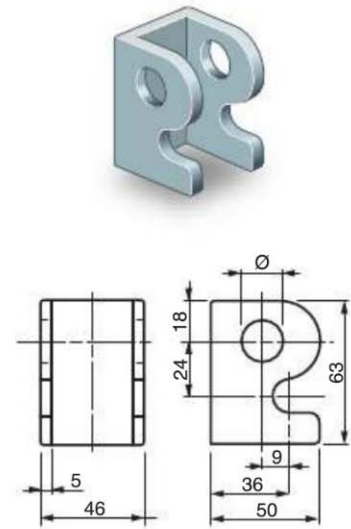
080.105.00.00*

Kg.

1.236

*Ad esaurimento - Until stock runs out

SUPPORTO ALTO Ø21 - Ø21 HINGE SUPPORT



COD.

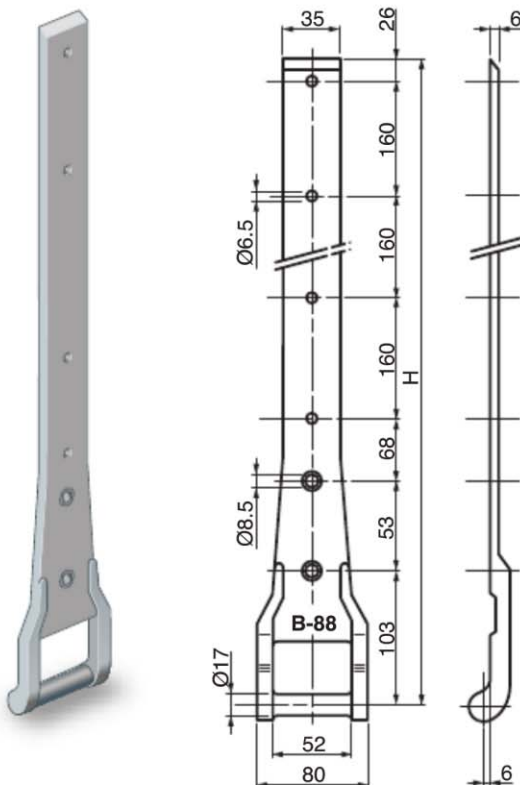
080.101.00.00*

Kg.

0.240

*Ad esaurimento - Until stock runs out

CERNIERA B 88 ZINCATA - B 88 ZINC PLATED HINGE



COD.

H = mm

SPONDA mm
FOR SIDEBOARDS
mm

Kg.

080.108.00.00*

600

600

1.325

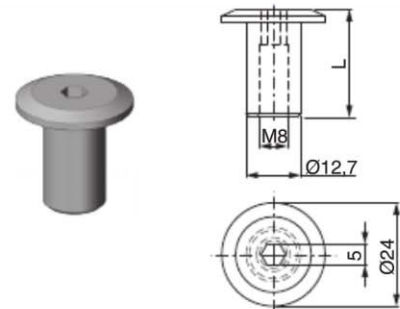
080.112.00.00*

1000

1000

1.980

*Ad esaurimento - Until stock runs out

BUSSOLA PER FISSAGGIO CERNIERA DOPPIA APERTURA
FASTENERS FOR HINGE

COD.

DESCRIZIONE - DESCRIPTION

Kg.

080594.00

BUSSOLA IN ALLUMINIO L=25
L=25 ALU THREADED BUSH

0.010

080595.00

BUSSOLA IN ALLUMINIO L=30
L=30 ALU THREADED BUSH

0.015

080593.01

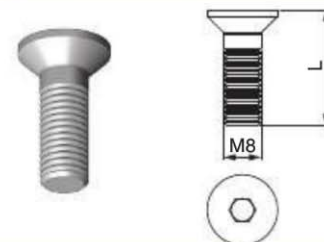
BUSSOLA IN ACCIAIO ZINCATO L=25
L=25 ZINC PLATED THREADED BUSH

0.030

080596.01

BUSSOLA IN ACCIAIO ZINCATO L=30
L=30 ZINC PLATED THREADED BUSH

0.035

VITE PER FISSAGGIO CERNIERA DOPPIA APERTURA
FASTENERS FOR HINGE

COD.

DESCRIZIONE - DESCRIPTION

Kg.

080597.01

VITE SPEI UNI 5933 M8X25 ZINCATA
ZINC PLATED SCREW UNI 5933 M8X25

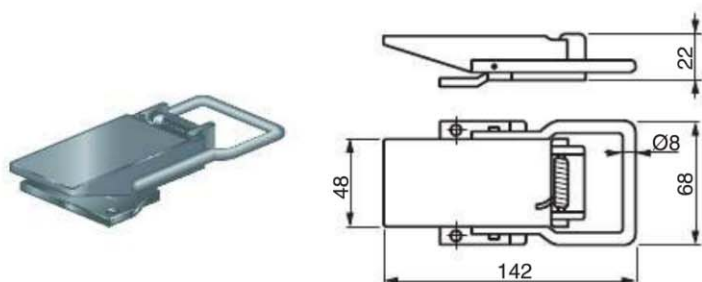
0.050

080598.01

VITE SPEI UNI 5933 M8X30 ZINCATA
ZINC PLATED SCREW UNI 5933 M8X30

0.060

CHIUSURA A LACCIO ZINCATA - ZINC PLATED NOOSE CATCH



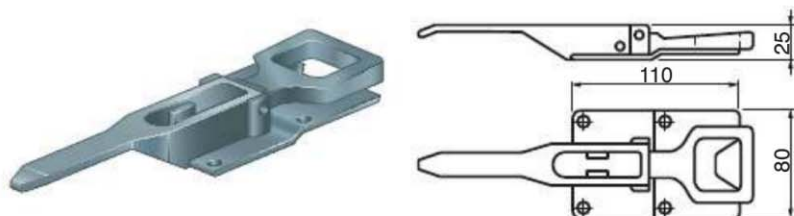
COD.

Kg.

080725.01

0.348

SERRATURA ZINCATA - ZINC PLATED CATCH



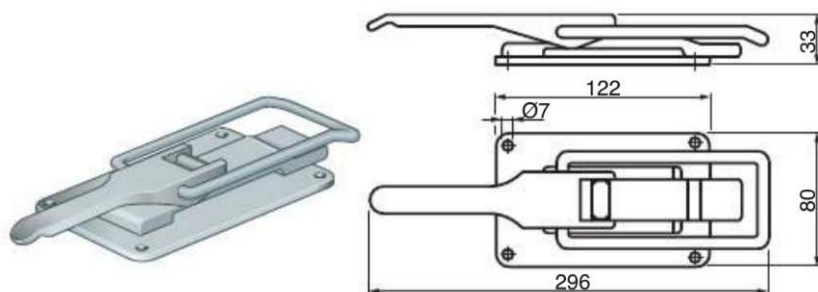
COD.

Kg.

080540.01

0.650

SERRATURA ZINCATA VIBERTI - ZINC PLATED CATCH



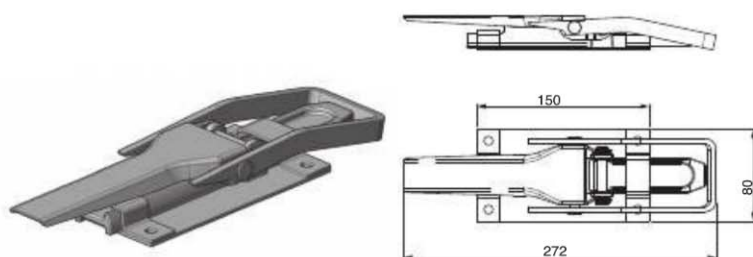
COD.

Kg.

080538.01

0.990

SERRATURA A TIRANTE - ZINC PLATED CATCH



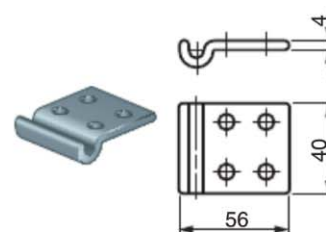
COD.

Kg.

080607.01

0.910

RISCONTRO ZINCATO - ZINC PLATED STRIKE



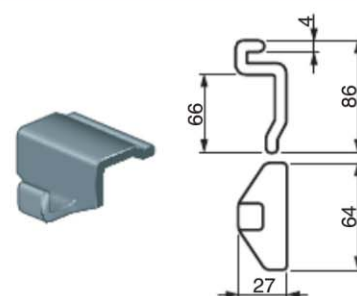
COD.

Kg.

080726.01

0.074

RISCONTRO ZINCATO - ZINC PLATED STRIKE



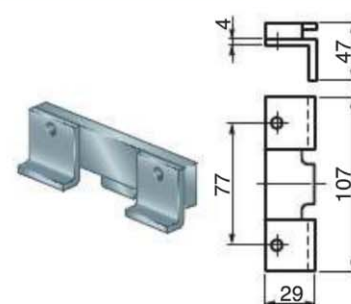
COD.

Kg.

080541.01

0.150

RISCONTRO ZINCATO - ZINC PLATED STRIKE



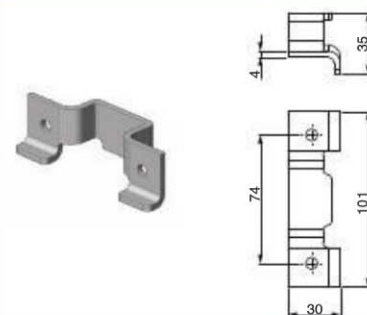
COD.

Kg.

080539.01

0.140

RISCONTRO ZINCATO - ZINC PLATED STRIKE



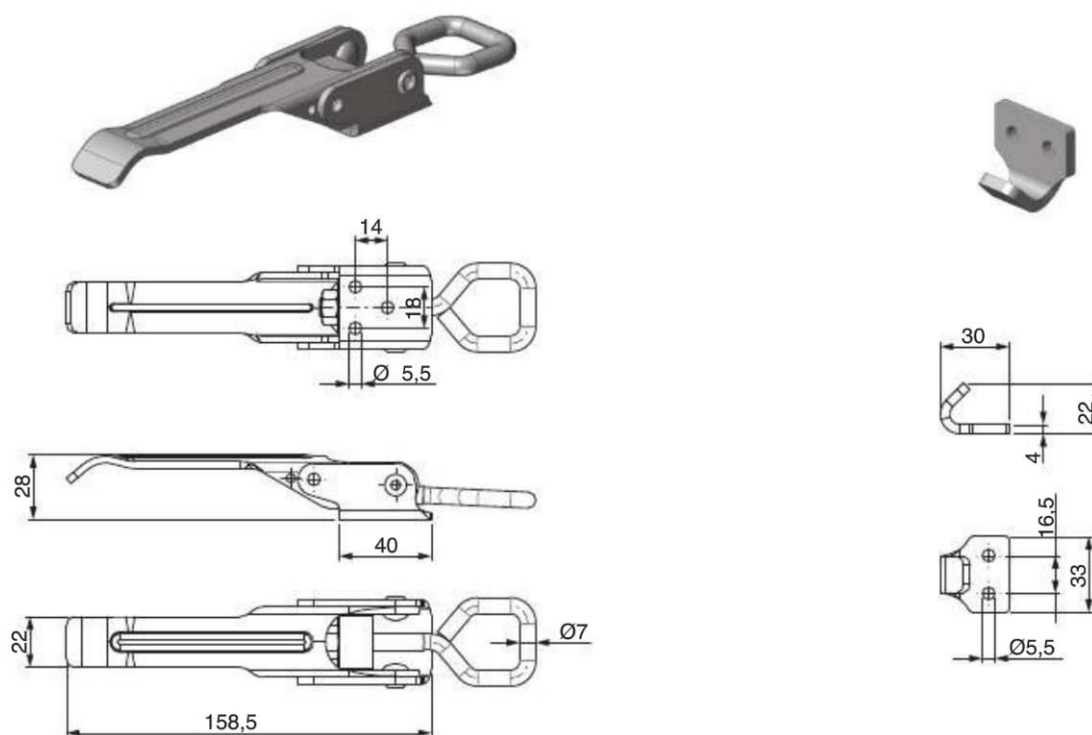
COD.

Kg.

080608.01

0.100

SERRATURA A TIRANTE ZINCATA COMPLETA DI RISCONTRO - ZINC PLATED CATCH WITH STRIKE



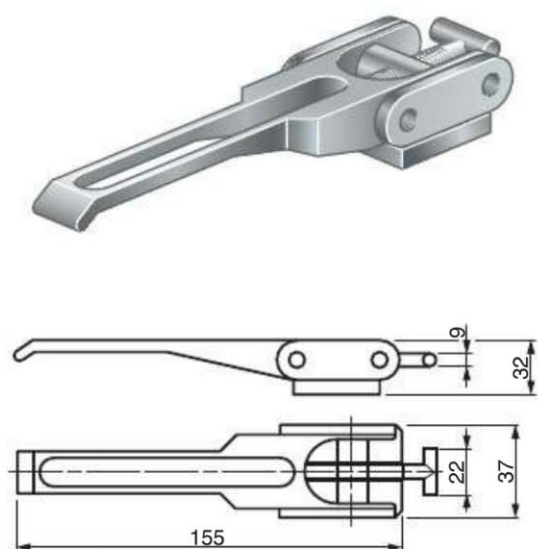
COD.

080798.01

Kg.

0.300

SERRATURA A TIRANTE ZINCATA - ZINC PLATED CATCH



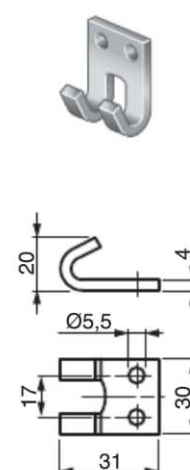
COD.

080.598.00.00

Kg.

0.250

RISCONTRO ZINCATO - ZINC PLATED STRIKE



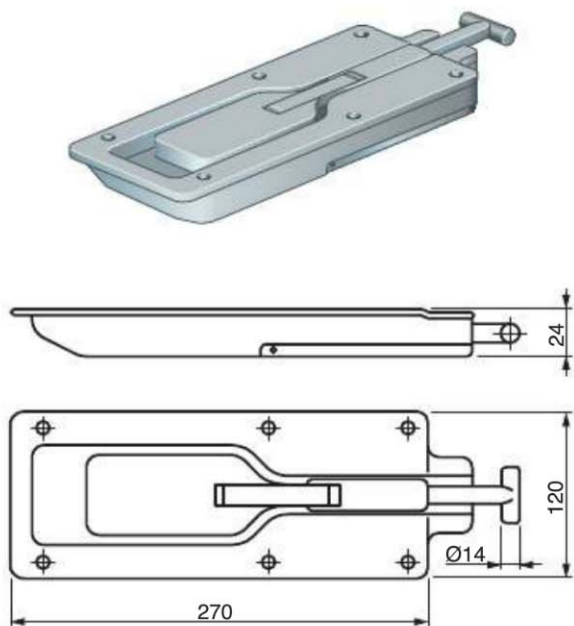
COD.

080.599.00.00

Kg.

0.036

SERRATURA INCASSATA A TIRANTE ZINCATA - RECESSED ZINC PLATED CATCH



COD.

Kg.

080578.01

1.340

RISCONTRO - STRIKE



COD.

Kg.

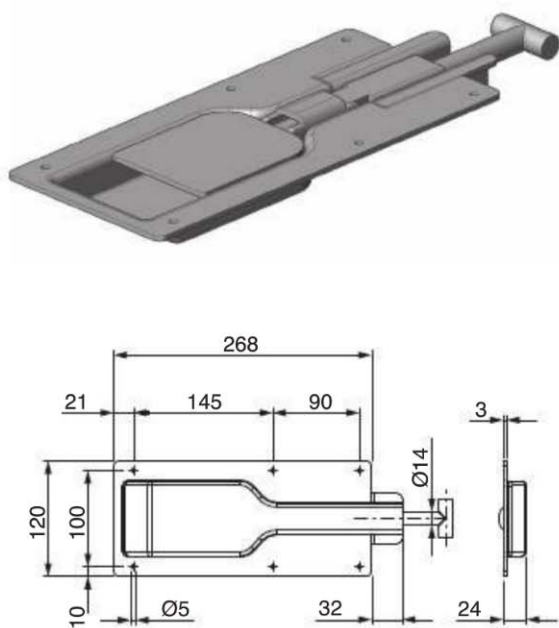
080580.00 Grezzo - Raw

0.200

080580.01 Zincato - Zinc Plated

0.200

SERRATURA INCASSATA A TIRANTE ZINCATA - RECESSED ZINC PLATED CATCH



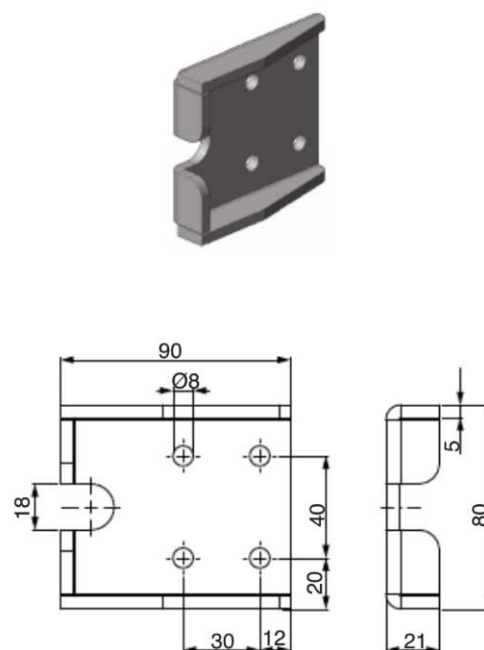
COD.

Kg.

080576.01

1.380

RISCONTRO ZINCATO - ZINC PLATED STRIKE



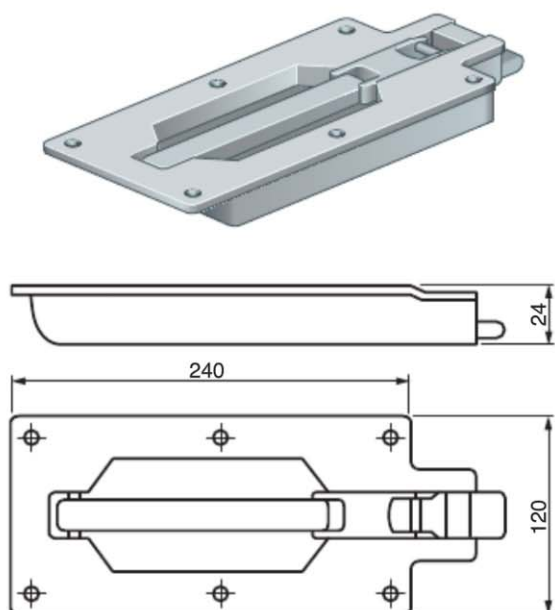
COD.

Kg.

080577.01

0.350

SERRATURA INCASSATA A CATENACCIO ZINCATA
RECESSED ZINC PLATED CATCH



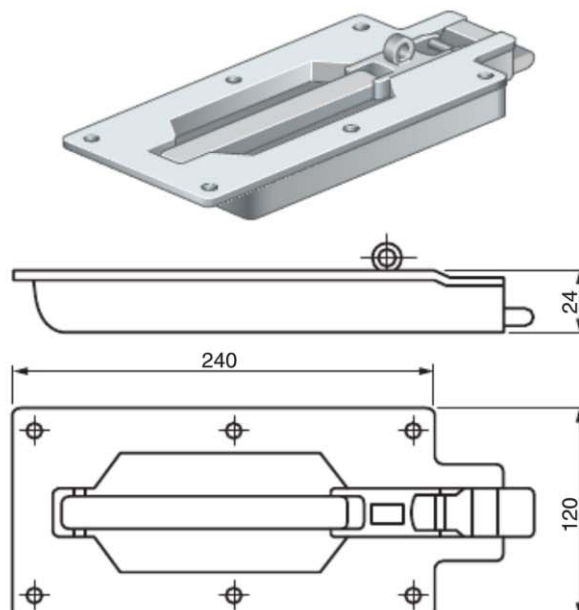
COD.

080537.01

Kg.

1.030

SERRATURA INCASSATA A CATENEACCIO CON ZINCATA LUCCHETTABILE
RECESSED ZINC PLATED CATCH LOCKABLE



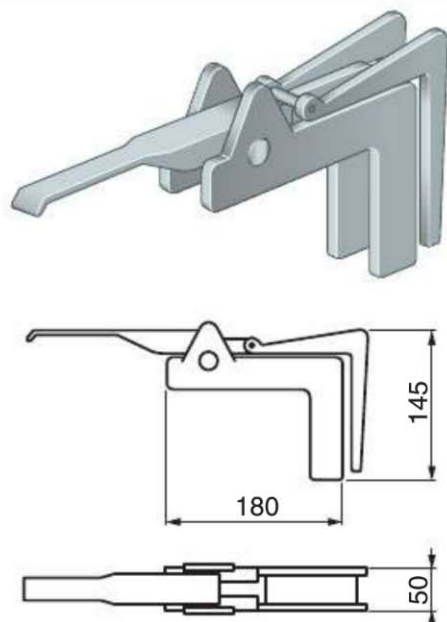
COD.

080.494.00.00

Kg.

1.010

PINZA FERMA CARICO ZINCATA
ZINC PLATED LOAD RETAINER LOCK



COD.

070702.01

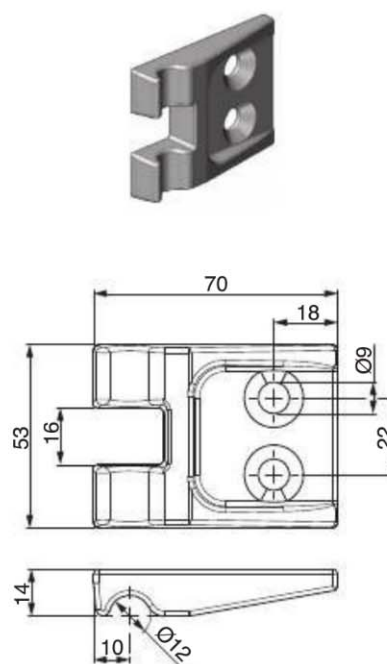
Kg.

2.850

070703.01 Sistema fermacarico completo
Load retainer lock full system

10.460

RISCONTRO ZINCATO - ZINC PLATED STRIKE



COD.

080599.01

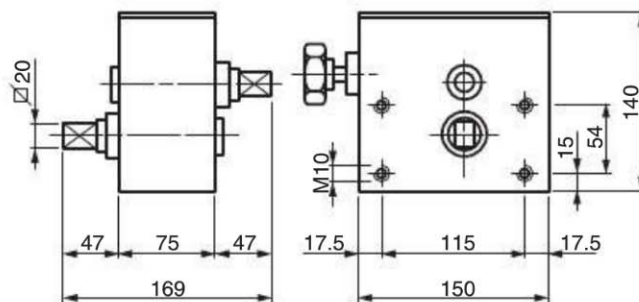
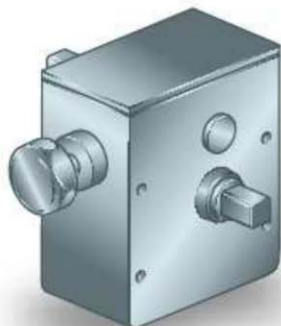
Kg.

0.230

COD. 090631.01

Kg. 4.590

RIDUTTORE ALZA CENTINA CESCHI 1:4
REDUCTION GEARBOX 1:4 RATIO

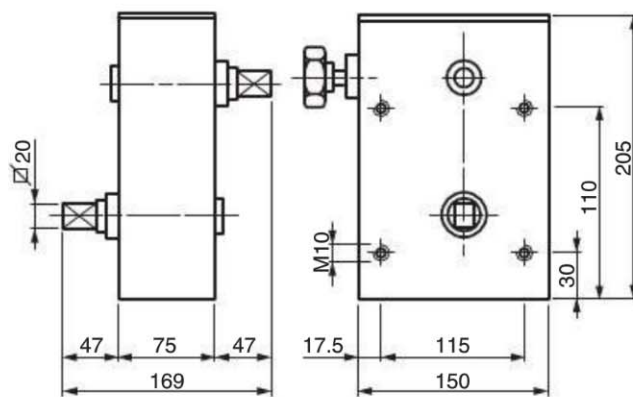


ZINCATO
ZINC PLATED

COD. 090632.01

Kg. 6.310

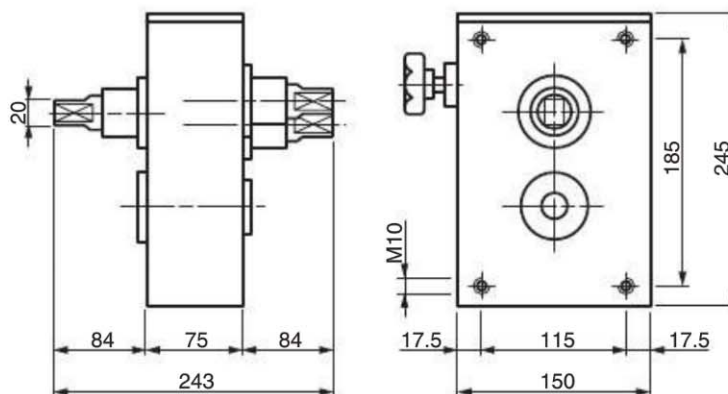
RIDUTTORE ALZA CENTINA CESCHI 1:8
REDUCTION GEARBOX 1:8 RATIO



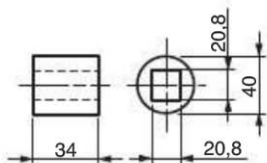
ZINCATO
ZINC PLATED

COD. 090630.01

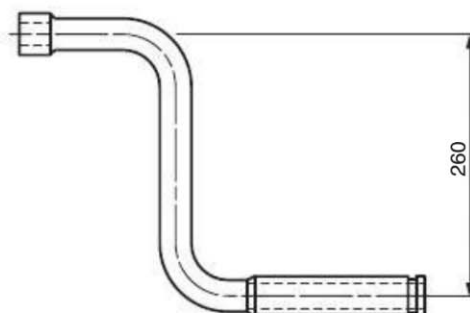
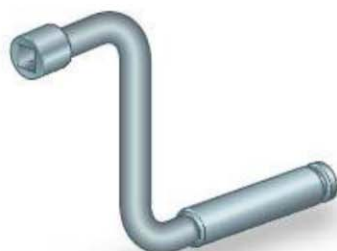
Kg. 10.280

RIDUTTORE ALZA CENTINA CESCHI 1:8 1:16
REDUCTION GEARBOX 1:8 1:16 RATIO**ZINCATO**
ZINC PLATED**COD. 090633.00**

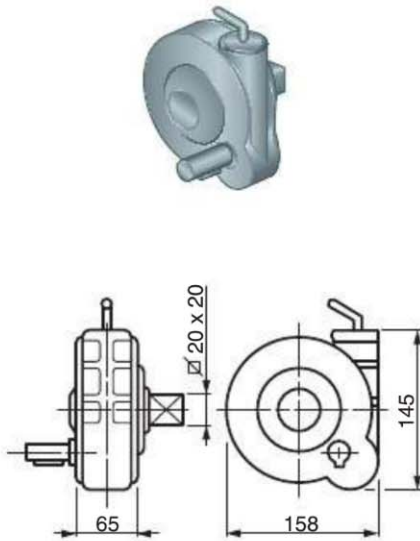
Kg. 0.210

BOCCOLA PER RIDUTTORE
BUSH FOR REDUCTION GEARBOX**COD. 090634.01**

Kg. 1.280

MANOVELLA PER RIDUTTORE
CRANK FOR REDUCTION GEARBOX**ZINCATA**
ZINC PLATED

RIDUTTORE ALZA CENTINA 1:4
REDUCTION GEARBOX 1:4 RATIO



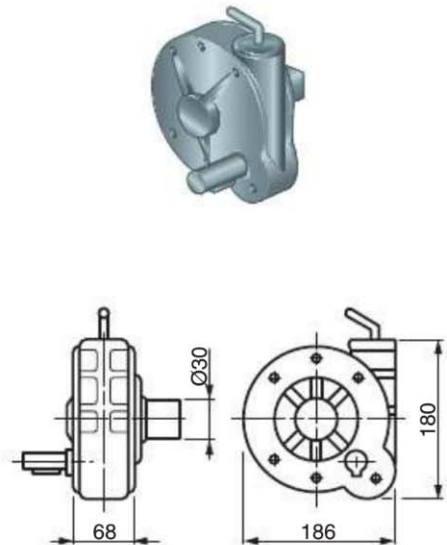
COD.

080.092.00.00

Kg.

6.450

RIDUTTORE ALZA CENTINA 1:7
REDUCTION GEARBOX 1:7 RATIO



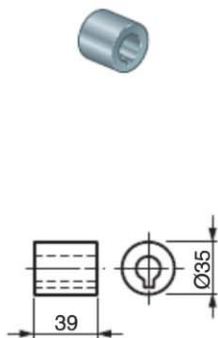
COD.

080.093.00.00

Kg.

9.250

BOCCOLA PER RIDUTTORE 1:4 1:7
BUSH



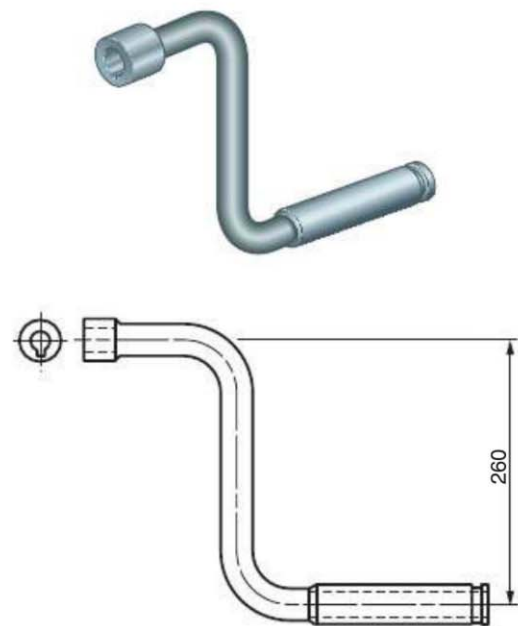
COD.

090548.00

Kg.

0.195

MANOVELLA PER RIDUTTORI 1:4 / 1:7
CRANK FOR REDUCTION GEARBOX 1:4 / 1:7 RATIO



COD.

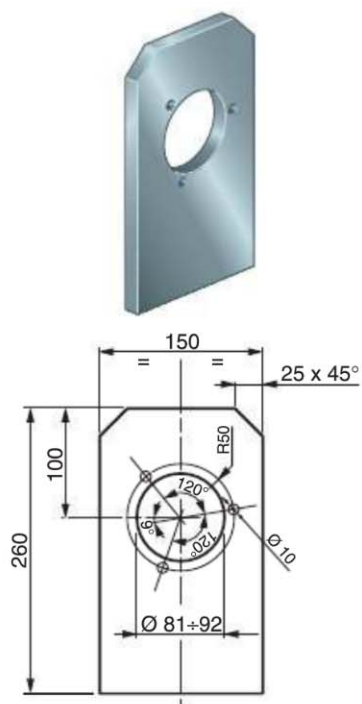
080.720.00.00

Kg.

1.200

RIDOTTORI ALZA CENTINE - REDUCTION GEARBOXES

PIASTRA PER RIDUTTORE COD. 080.092.00.00
 PLATE FOR REDUCTION GEARBOX CODE 080.092.00.00



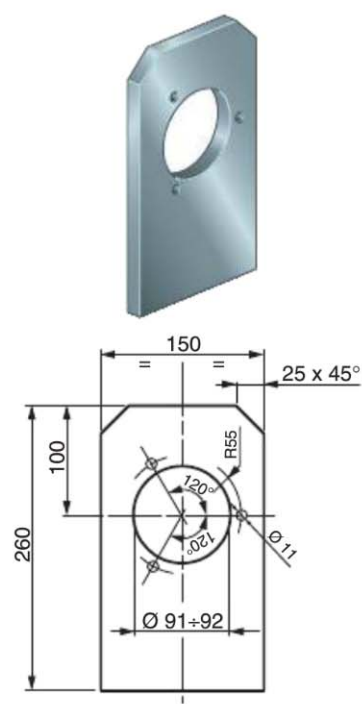
COD.

080.488.00.00

Kg.

1.570

PIASTRA PER RIDUTTORE COD. 080.093.00.00
 PLATE FOR REDUCTION GEARBOX CODE 080.093.00.00



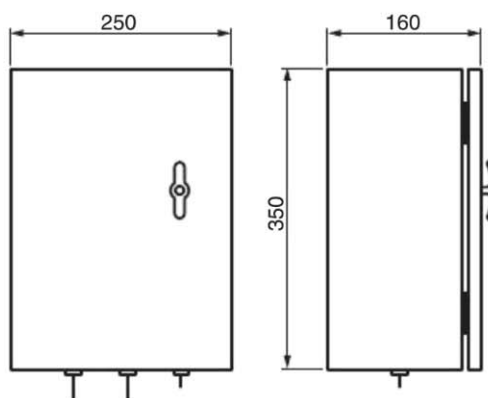
COD.

080.490.00.00

Kg.

1.480

QUADRO COMANDO CON CHIAVI PER MOTORIDUTTORI HM CON PULSANTIERA - 3 FILI
 CONTROL CONSOLE WITH KEYS FOR GEAR MOTOR HM WITH BUTTON STRIP - 3 WIRES



COD.

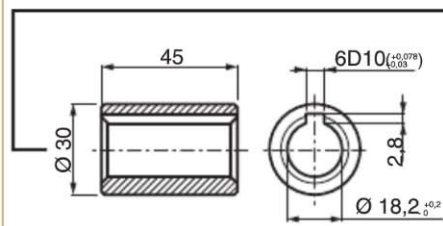
080.806.00.00

Kg.

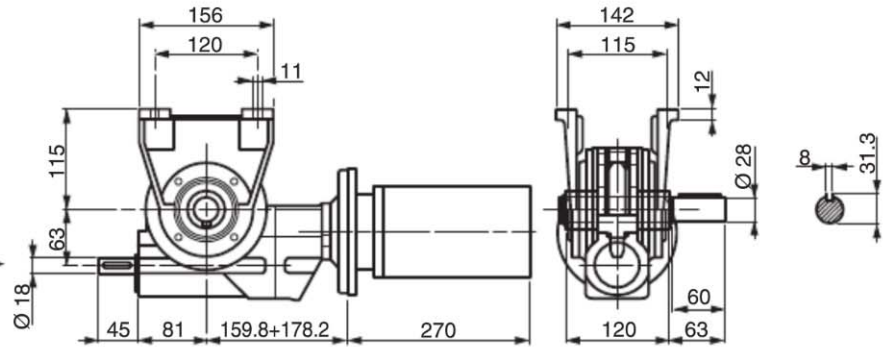
4.100

MOTORIDUTTORE ELETTRICO 1000W 24V 1800RPM
ELECTRIC GEAR MOTOR 1000W 24V 1800RPM

BOCCOLA DI EMERGENZA
EMERGENCY BUSH

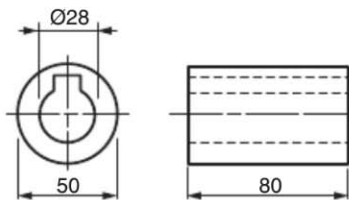


COD.	Kg.
080.092.00.00	6.450



COD.	VOLT	WATT	LUNGHEZZA MAX. DELLA CENTINA MAXIMUM LENGTH OF THE HOOP	Kg.
080.701.00.00	24	1000	13 Metri	16.300

BOCCOLA CON CHIAVE Ø 50 X 80 PER RIDUTTORE
BUSH FOR LARGE SHAFT



COD.	Kg.
080.692.01.00	0.800

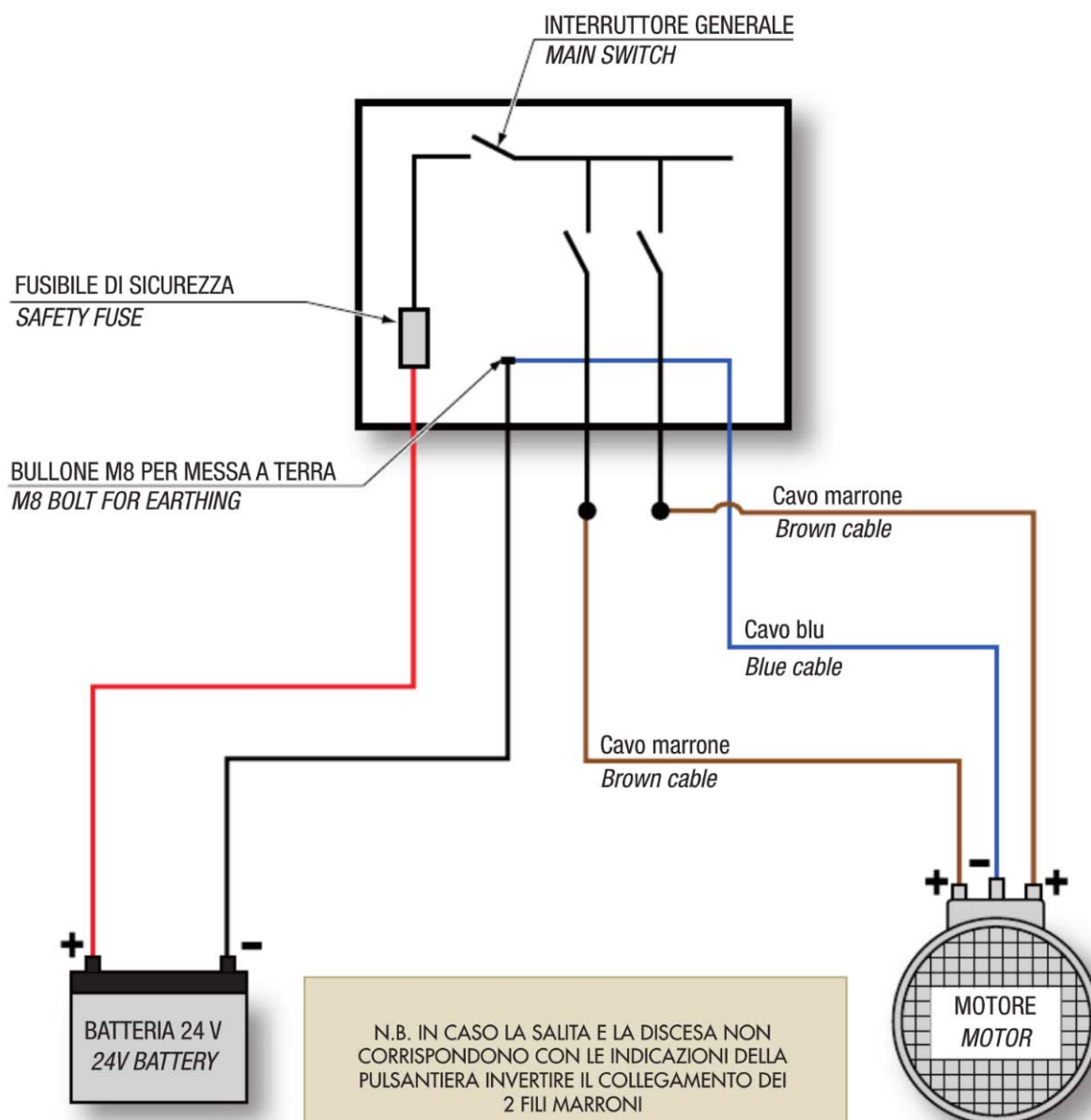
*= PER SCHEMA ELETTRICO
VEDERE A PAG. 188

*= FOR WIRING DIAGRAM
SEE ON PAGE 188

SCHEMA DI COLLEGAMENTO ELETTRICO CON QUADRO ELETTRICO TRA 80.701 E 80.806
 WIRING DIAGRAM FOR ELECTRICAL CONNECTION TO SWITCH BOARD BETWEEN 80.701 AND 80.806

ATTENZIONE TUTTI I FILI DEVONO
 AVERE UNA SEZIONE MINIMA DI 16 MM²

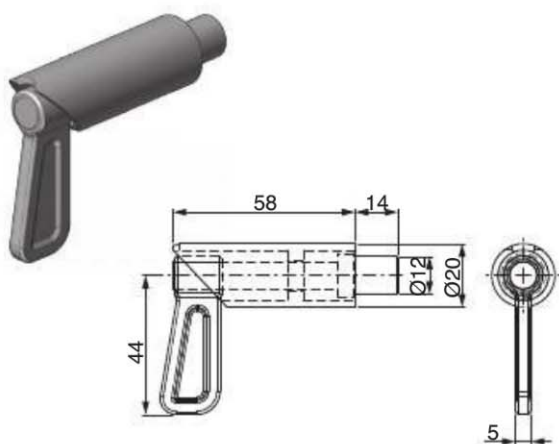
CAUTION! ALL THE WIRES MUST
 HAVE A MINIMUM SECTION OF 16 SQMM



N.B. IN CASO LA SALITA E LA DISCESA NON
 CORRISPONDONO CON LE INDICAZIONI DELLA
 PULSANTIERA INVERTIRE IL COLLEGAMENTO DEI
 2 FILI MARRONI

NOTE: IF RISE AND LOWERING DO NOT
 CORRESPOND TO THE BUTTON STRIP MARKS,
 INVERT THE BROWN CABLES CONNECTION

CATENACCIO A MOLLA ZINCATO - ZINC PLATED SPRING BOLT

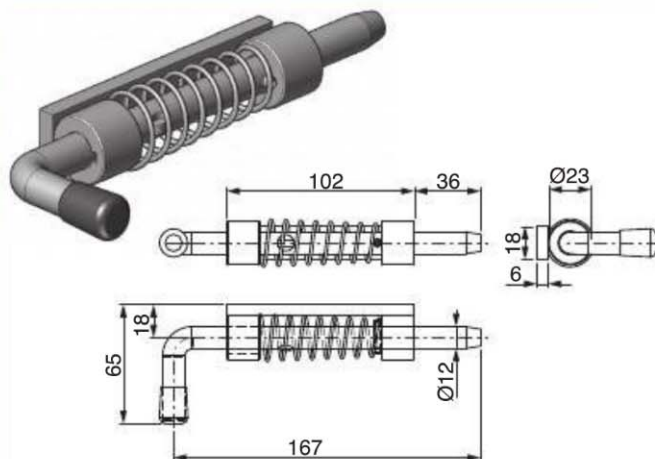


COD.

080758.01

Kg.

0.136

CATENACCIO A MOLLA CON BOCCOLA E SEDE CHIAVETTA ORIZZONTALE
SPRING BOLT WITH BUSH AND HORIZONTAL KEY SEAT

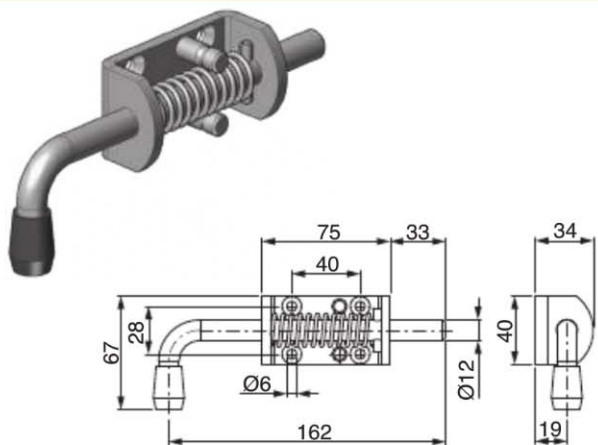
COD.

080.348.00.00

Kg.

0.370

CATENACCIO A MOLLA ZINCATO - ZINC PLATED SPRING BOLT



COD.

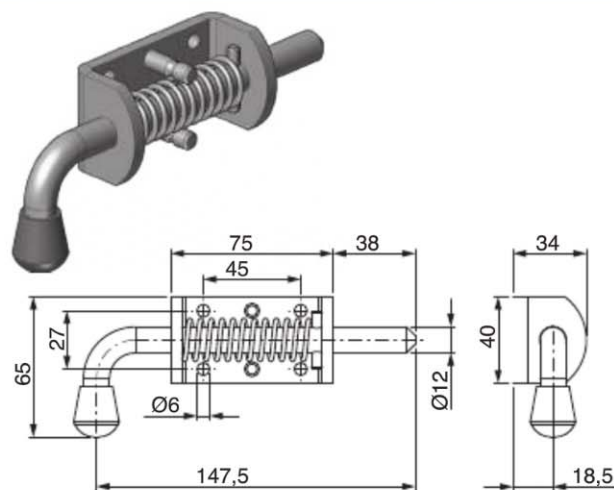
081234.01

Kg.

0.340

142307.00 Inox - Stainless Steel

CATENACCIO A MOLLA ZINCATO - ZINC PLATED SPRING BOLT



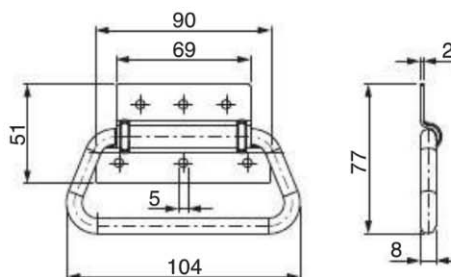
COD.

080658.01

Kg.

0.350

MANIGLIA APRISPONDA ZINCATA - ZINC PLATED SIDEBOARD LIFTING HANDLE



COD.

080509.01

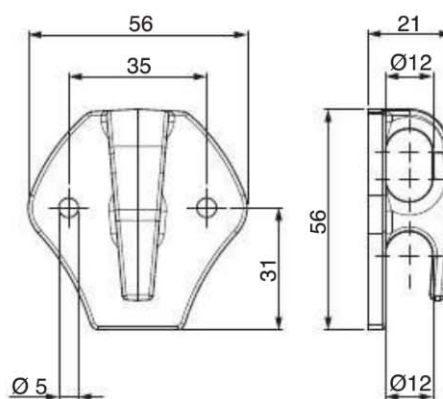
Kg.

0.142

142509.00 - 080.426.00.EC INOX - Stainless Steel

0.142

TENDIFUNE IN PVC BIANCO - WHITE PVC HOOK



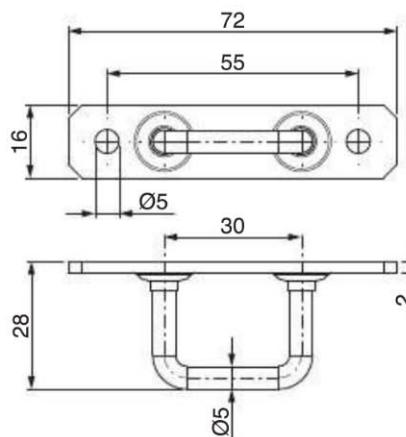
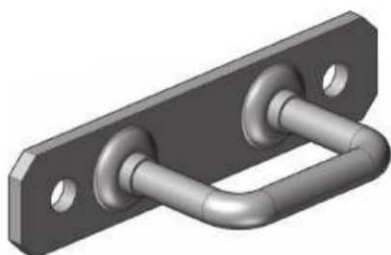
COD.

080571.00

Kg.

0.012

CAVALLOTTO TENDIFUNE ZINCATO - ZINC PLATED HOOK



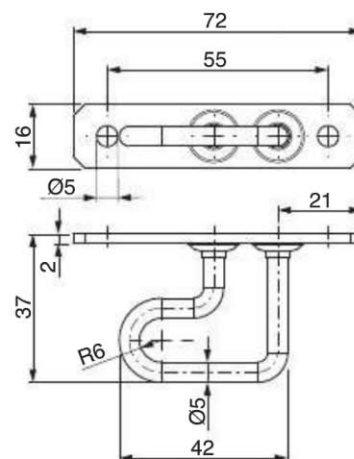
COD.

080659.01

Kg.

0.032

CAVALLOTTO TENDIFUNE ZINCATO - ZINC PLATED HOOK



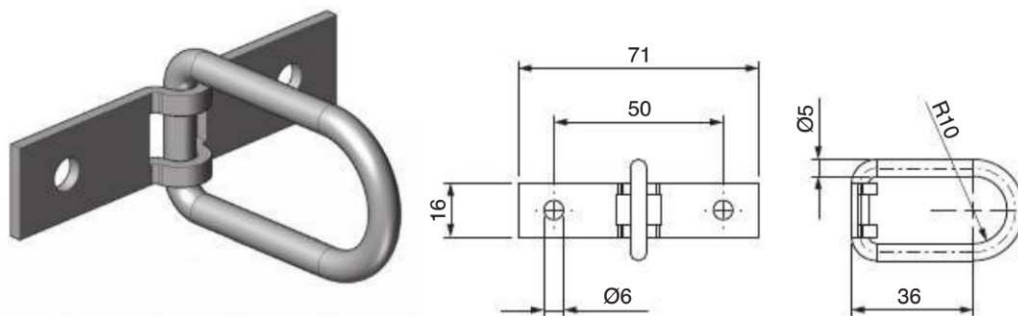
COD.

080660.01

Kg.

0.040

CAVALLOTTO TENDIFUNE ZINCATO - ZINC PLATED HOOK



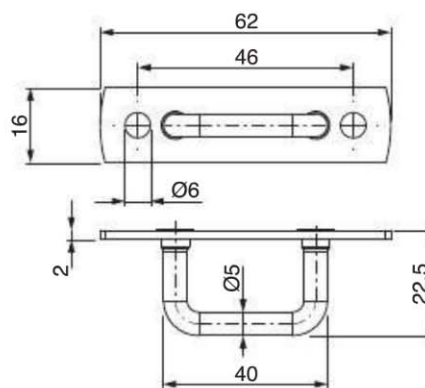
COD.

080661.01

Kg.

0.034

CAVALLOTTO TENDIFUNE ZINCATO - ZINC PLATED HOOK



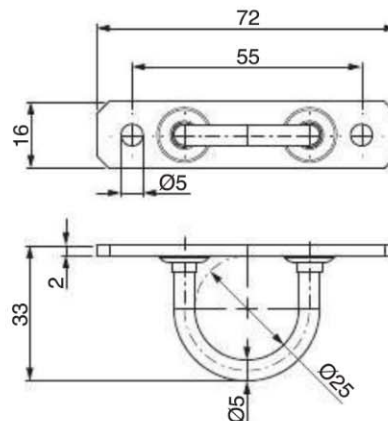
COD.

080673.01

Kg.

0.027

CAVALLOTTO TENDIFUNE ZINCATO - ZINC PLATED HOOK



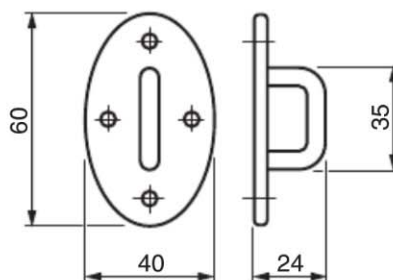
COD.

080674.01

Kg.

0.033

ANELLO TELONE BASSO - LOW SHEET RING



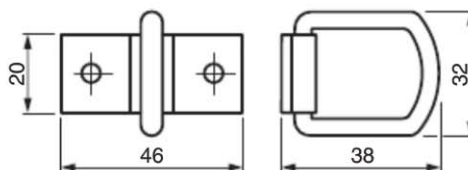
COD.

080.396.00.00

Kg.

0.033

ANELLO TELONE CORTO - SHORT SHEET RING



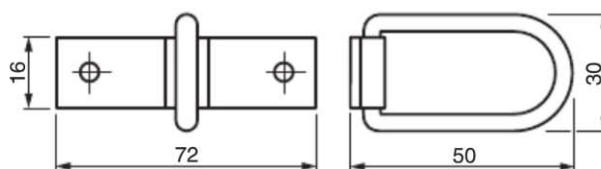
COD.

080.452.00.00

Kg.

0.300

ANELLO TELONE LUNGO - LONG SHEET RING

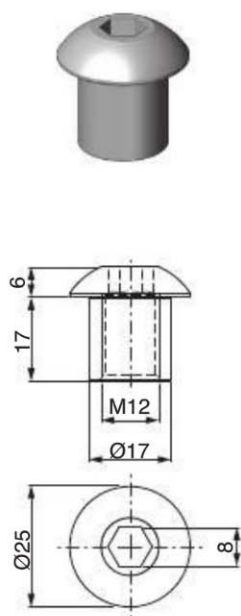


COD.

080.454.00.00

Kg.

0.350

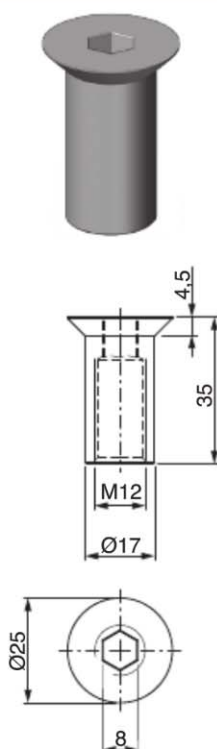
BUSSOLA TESTA BOMBATA
 ROUNDED HEAD BUSH


COD.

Kg.

080761.01

0.030

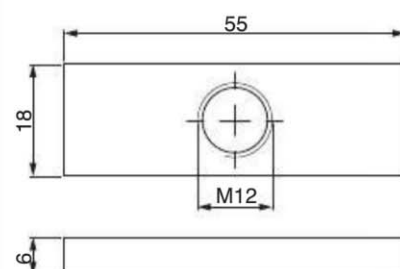
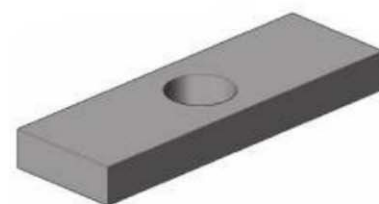
BUSSOLA TESTA SVASATA
 COUNTERSUNK HEAD BUSH


COD.

Kg.

080612.01 - 080.036.00.00

0.040

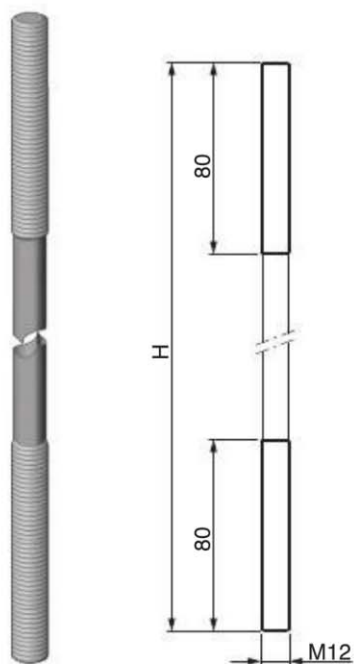
PIASTRINA ZINCATA PER TIRANTE
 ZINC PLATED PLATE


COD.

Kg.

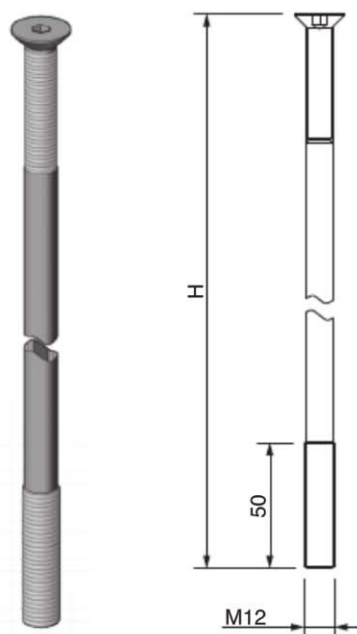
080648.01

0.040

TIRANTE ZINCATO PER SPONDE IN ALLUMINIO - ZINC PLATED TIE ROD FOR ALU SIDEBOARDS


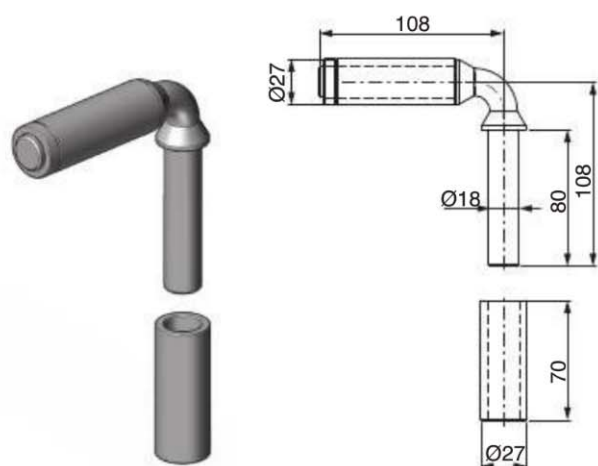
COD.	H = mm	SPONDA mm SIDEBOARD mm	Kg.
080614.01	590	600	0.410
080616.01	690	700	0.480
080618.01	790	800	0.540
080620.01	890	900	0.615
080622.01	990	1000	0.685
080623.01	1090	1100	0.760
080624.01	1190	1200	0.830

TIRANTE ZINCATO CON TESTA SVASATA - ZINC PLATED TIE ROD WITH COUNTERSUNK HEAD



COD.	H = mm	H1 = mm	Kg.
080.610.00.00	595	545	0.410
080.612.00.00	695	645	0.480
080.614.00.00	795	745	0.550
080.616.00.00	895	845	0.620
080.618.00.00	995	945	0.690
080.620.00.00	1095	1045	0.760
080.622.00.00	1195	1145	0.830
080.624.00.00	1395	1345	0.970

CERNIERA GIREVOLE A "L" - "L" HINGE



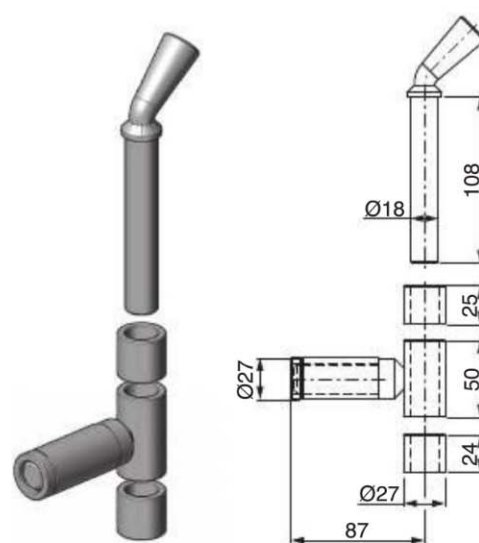
COD.

080.027.00.00

Kg.

0.760

CERNIERA GIREVOLE A "T" - "T" HINGE



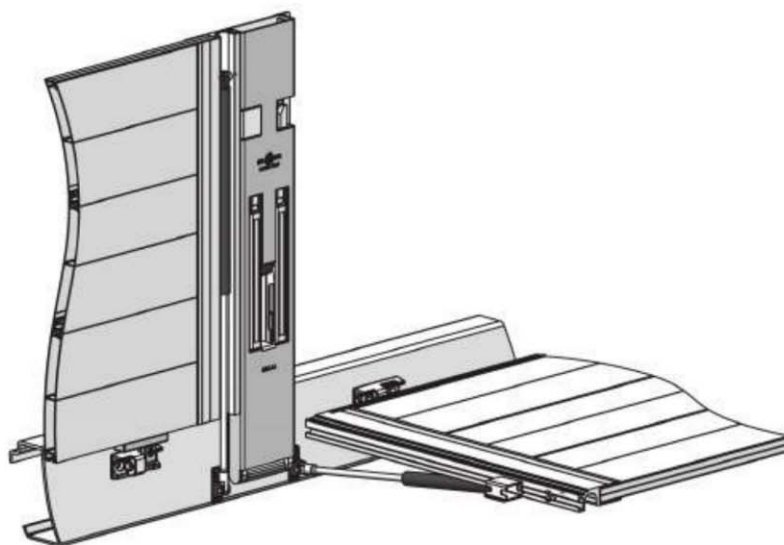
COD.

080.025.00.00

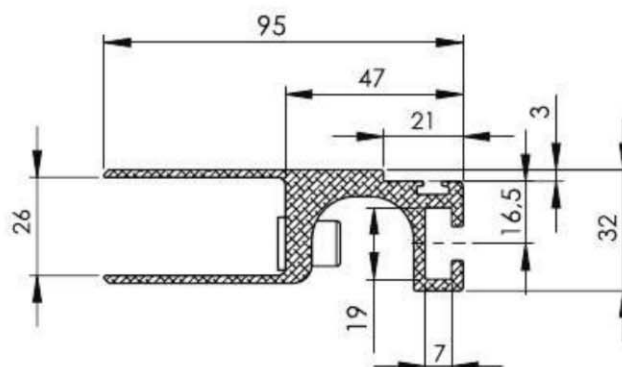
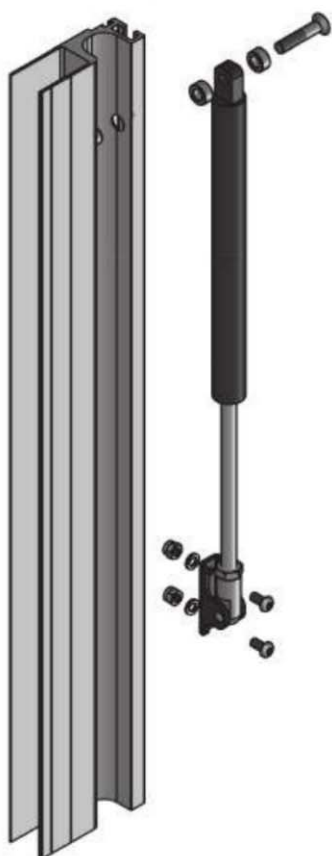
Kg.

0.680

KIT "SPONDA EASY" PER ALLESTIMENTI FISSI E SPONDE IN ALLUMINIO
 "EASY" PANEL KIT FOR FIX BODIES W/ALU SIDEBOARDS



Contenuto del kit
 (rappresentata versione DX)
 Kit contents
 (shown right version)

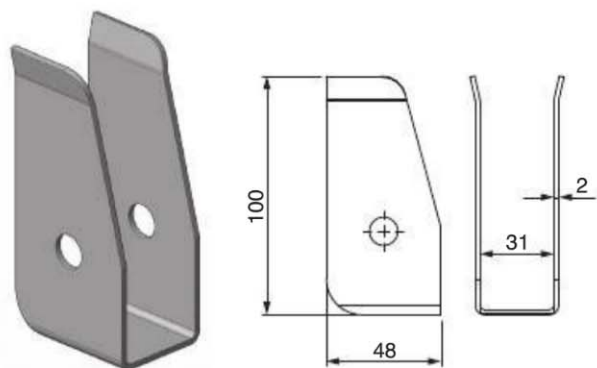


IN FASE D'ORDINE COMUNICARE PESO E LUNGHEZZA
 DELLA SPONDA

WEIGHT AND LENGTH OF SIDEBOARD TO BE SPECIFIED
 AT TIME OF ORDER

H Sponda Sideboard H (mm)	COD.
600	081130.00DX (RIGHT)
	081130.00SX (LEFT)
800	081131.00DX (RIGHT)
	081131.00SX (LEFT)
1000	081132.00DX (RIGHT)
	081132.00SX (LEFT)

Versione DX = Per il lato destro della sponda
 RIGHT version = For sideboard right side

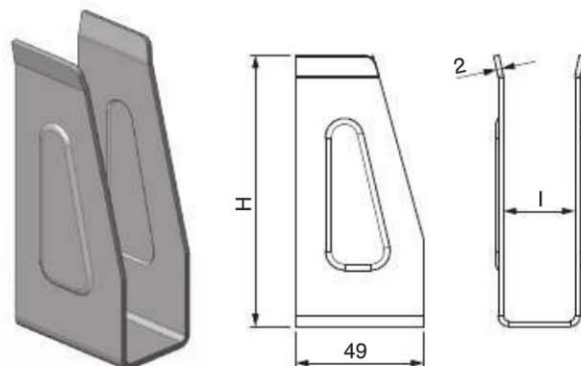
MENSOLA PORTA CENTINA
SUPPORT BRACKET

COD.

081240.00

Kg.

0.140

MENSOLA PORTA CENTINA
SUPPORT BRACKET

COD.

080569.00

H

100

I

26

Kg.

0.140

080.061.IX.00
INOX - Stainless Steel

100

26

0.140

080570.00

100

31

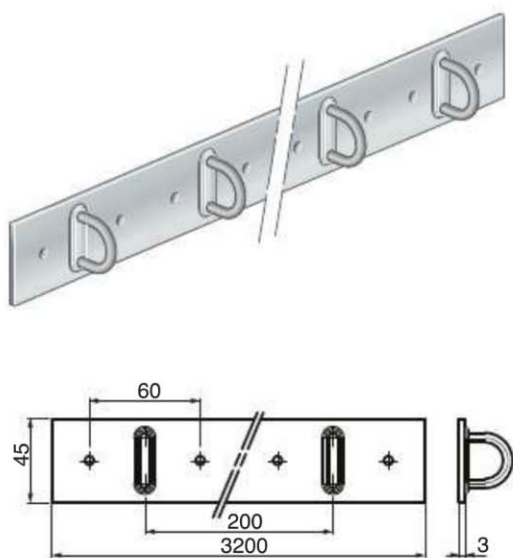
0,154

080920.00

120

31

0.170

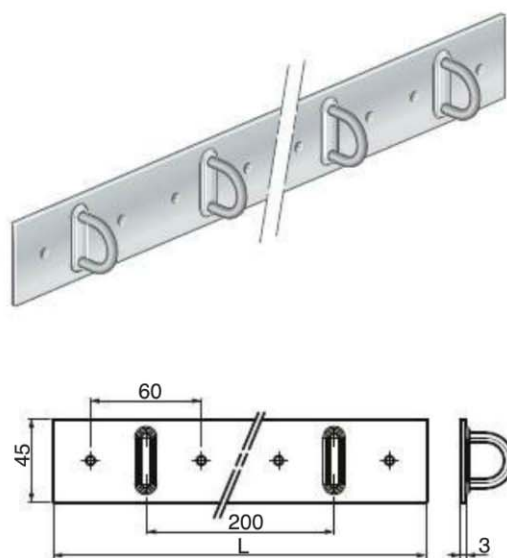
PIATTO TIR ALLUMINIO L=3200
L=3200 ALUMINIUM TIR STRIP

COD.

080.543.00.00

Kg.

1.210

PIATTO TIR TIPO S ZINCATO
ZINC PLATED TIR STRIP

COD.

080549.01

L = MM

2500

Kg.

2.000

080671.01

2900

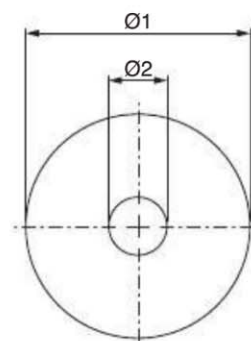
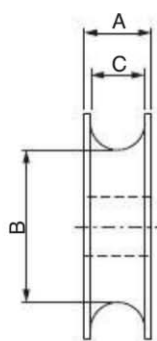
2.250

080676.01

3100

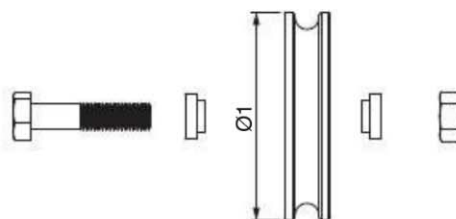
2.500

CARRUCOLE - PULLEYS



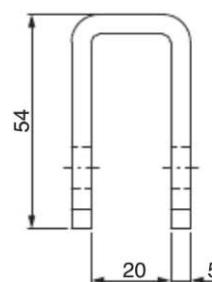
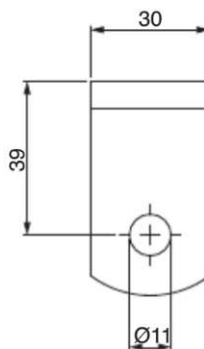
COD.	Ø1	Ø2	A	B	C	Kg.
070574.00	50	13	15	34	12	0.130
070575.00	60	16	18	46	12	0.270

CARRUCOLE ZINCATE CON CUSCINETTO - ZINC PLATED PULLEYS WITH BEARING



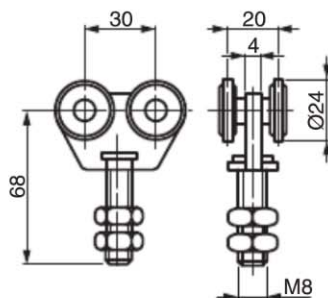
SENZA KIT DI MONTAGGIO - WITHOUT FASTENER KIT			CON KIT DI MONTAGGIO - WITH FASTENER KIT		
COD.	Ø1	Kg.	COD.	Ø1	Kg.
070620.02 - 080.043.00.00	50	0.160	070620.01A	50	0.250
070621.02	60	0.220	070621.01A	60	0.310
070622.02 - 070918.02	80	0.430			

CAVALLOTTO X CARRUCOLE Ø50/60 CON CUSCINETTO - SUPPORT FOR PULLEYS Ø50/60 WITH BEARING



COD.	Kg.
070667.00 - 080.133.00.00	0.085

CARRELLO SCORREVOLE ZINCATO CON 4 CARRUCOLE Ø24 - ZINC PLATED SLIDING CARRIAGE Ø24



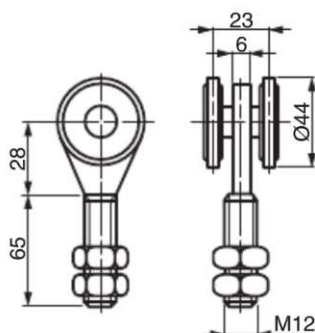
COD.

070655.02

Kg.

0.150

CARRELLO SCORREVOLE ZINCATO CON 2 CARRUCOLE Ø44 - ZINC PLATED SLIDING CARRIAGE Ø44



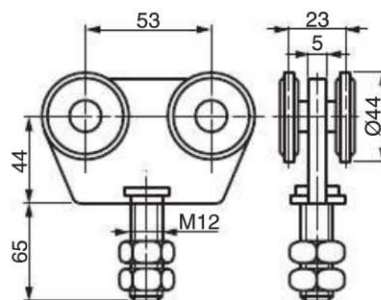
COD.

070651.02 - 080.484.00.00

Kg.

0.300

CARRELLO SCORREVOLE ZINCATO CON 4 CARRUCOLE Ø44 - ZINC PLATED SLIDING CARRIAGE Ø44



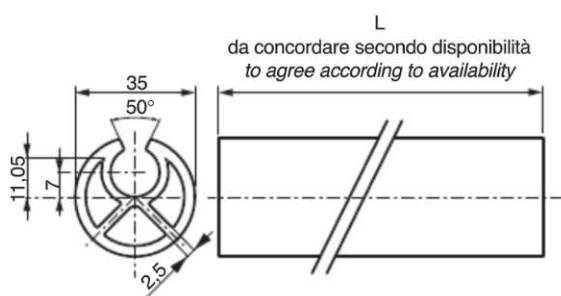
COD.

070656.02

Kg.

0.620

PROFILO Ø 35 AVVOLGIMENTO TELO LATERALE TIPO AD IN ALLUMINIO
ALUMINIUM PROFILE Ø 35 TO ROLL LATERAL CURTAIN



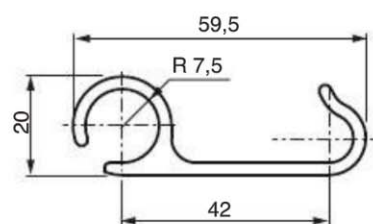
COD.

080.726.00.00

Kg./MT

1.140

PROFILO TENSIONAMENTO LATERALE TIPO
LATERAL TENSIONER PROFILE



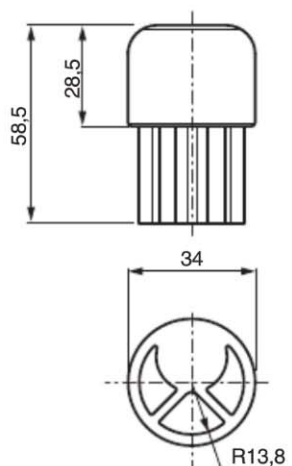
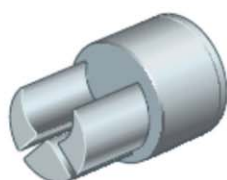
COD.

080.727.00.00

Kg./MT

0.960

PERNO SUPERIORE DI TRAZIONE PROFILO
UPPER PIN FOR PROFILE TRACTION



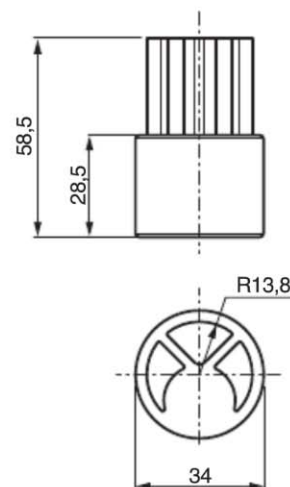
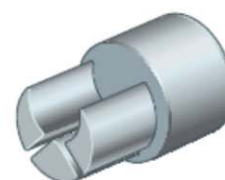
COD.

080.726.01.EC

Kg.

0.260

PERNO INFERIORE DI CHIUSURA PROFILO
LOWER PROFILE FOR PROFILE CLOSURE



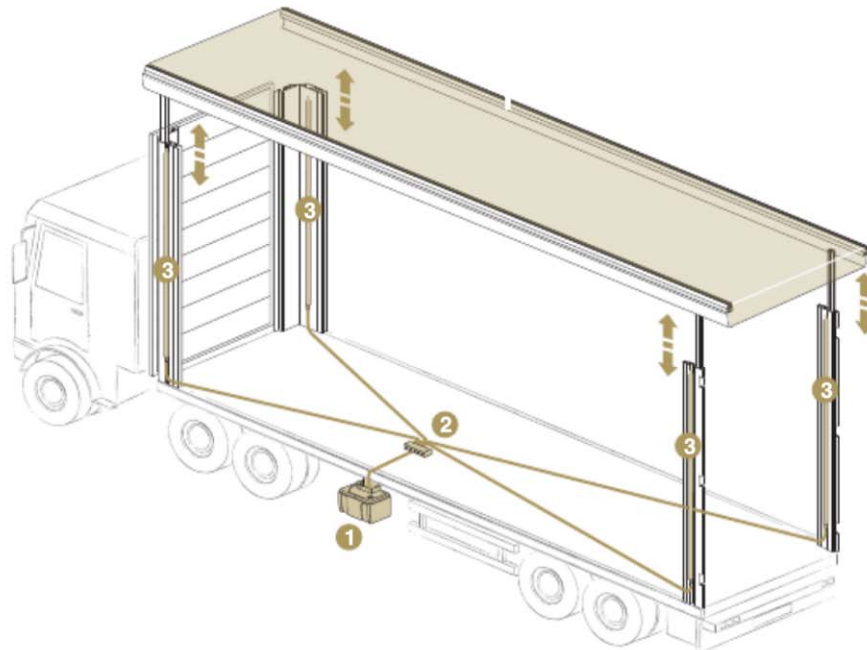
COD.

080.726.02.EC

Kg.

0.190

ESEMPIO DI FUNZIONAMENTO KIT CENTINA EXAMPLE OF TRAILER'S ROOF LIFTING FUNCTION



KIT CENTINA SEMPLICE EFFETTO

Consente di alzare il tetto di un veicolo centinato, tramite la potenza idraulica fornita dalla minicentralina. La discesa del tetto avviene per gravità.

Il kit è composto da:

- 1 > n° 1 Minicentralina "COMPACT" 24V S.E. con pulsantiera, commutatore e cicalino
- 2 > n° 1 divisore di flusso a 4 stadi
- 3 > n° 4 cilindri a semplice effetto.

SINGLE ACTING TRAILER'S ROOF LIFTING

It allows the trailer's roof lifting, by means of the hydraulic power supplied by a power pack.

The roof lowering takes place by force of gravity.

The Kit is composed as follows:

- 1 > no. 1 "COMPACT" 24V S.A. Power Pack with remote control, on-off switch and buzzer
- 2 > no. 1 4-stages flow divider
- 3 > no. 4 single acting cylinders.

KIT CENTINA DOPPIO EFFETTO

Consente di alzare il tetto di un veicolo centinato, tramite la potenza idraulica fornita dalla minicentralina. La discesa del tetto avviene invertendo la direzione del flusso d'olio. Permette di esercitare una pressione del tetto sul carico al fine di aumentarne la stabilità.

Il kit è composto da:

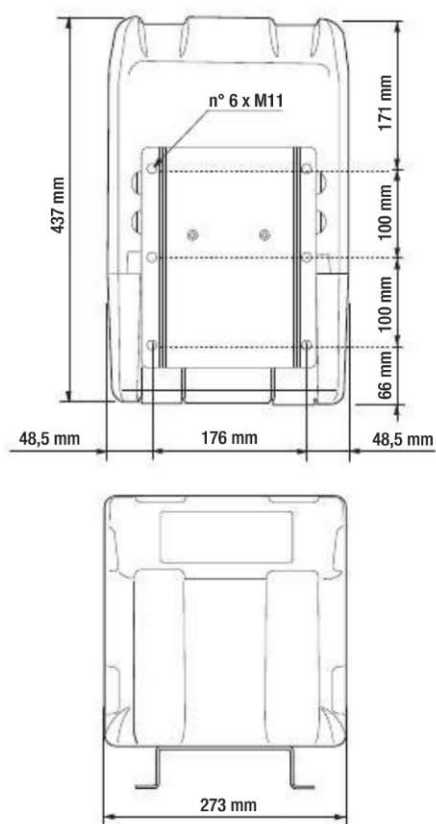
- 1 > n° 1 Minicentralina "COMPACT" 24V D.E. con pulsantiera, commutatore e cicalino
- 2 > n° 1 divisore di flusso a 4 stadi
- 3 > n° 4 cilindri a doppio effetto.

DOUBLE ACTING TRAILER'S ROOF LIFTING

It allows the trailer's roof lifting, by means of the hydraulic power supplied by a power pack. The roof lowering takes place by inverting the direction of the oil flow. It let to bring the roof pressure onto the load in order to increase the stability.

The Kit is composed as follows:

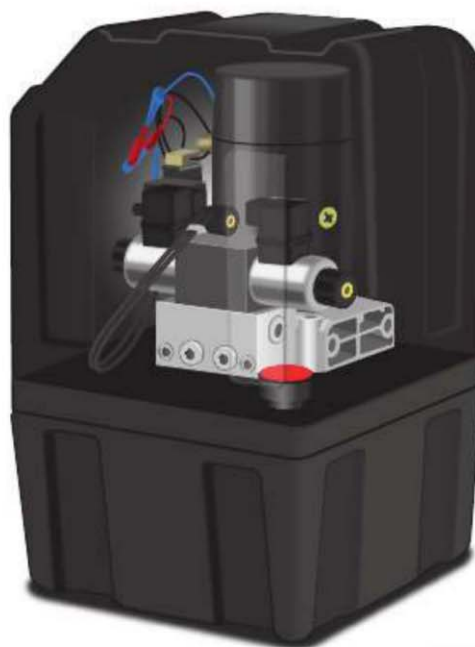
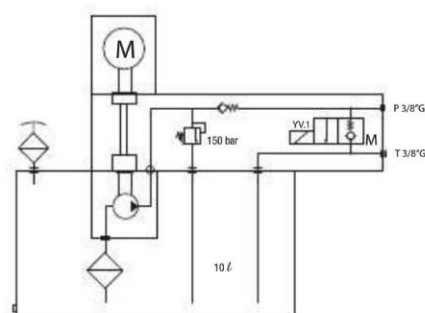
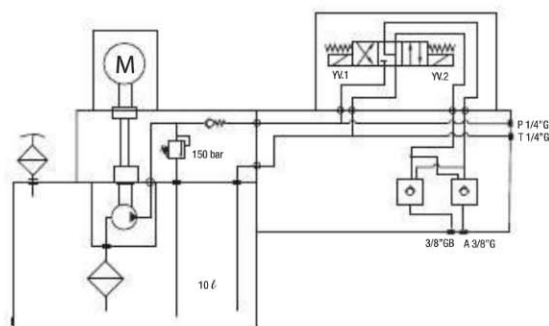
- 1 > no. 1 "COMPACT" 24V S.A. Power Pack with remote control, on-off switch and buzzer
- 2 > no. 1 4-stages flow divider
- 3 > no. 4 double acting cylinders.

COD. 87.242**MINICENTRALE 24V PER CENTINA A SEMPLICE EFFETTO**
24V SINGLE ACTING POWER PACK**COD.** 87.242.DE**MINICENTRALE 24V PER CENTINA A DOPPIO EFFETTO**
24V DOUBLE ACTING POWER PACK**COD.** 87.242.00.12**MINICENTRALE 12V PER CENTINA A SEMPLICE EFFETTO**
12V SINGLE ACTING POWER PACK**COD.** 87.242.DE.12**MINICENTRALE 12V PER CENTINA A DOPPIO EFFETTO**
12V DOUBLE ACTING POWER PACK**MINICENTRALE COMPACT HY10**
per CENTINA

Minicentrale con motore CC 12V/1800W e da 24V/2000W S3, completo di termocoppia e teleruttore da 200A. Serbatoio da 10 litri in Termoplast con cuffia e supporto di montaggio. La centrale eroga 5, 6, 7 litri/min rispettivamente a 190,150 e 60 bar. Fornibile con pulsantiera cablata.

HY10 MINI POWER PACK for
TRAILER'S ROOF LIFTING

Mini power pack with 12V /1800W and 24V /2000W S3 DC motor, completed of thermocouple and starting relay 200A. With 10 lt Termoplast plastic tank and mounting support. Mini power pack gives 5, 6, 7 lt/min at 190,150 and 60 bar. Available with remote control.

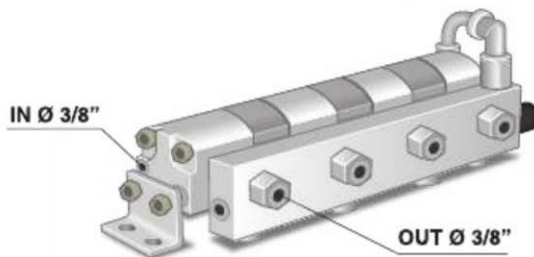
**SCHEMA IDRAULICO / HYDRAULIC SCHEMATIC****SEMPLICE EFFETTO / SINGLE ACTING****DOPPIO EFFETTO / DOUBLE ACTING**

COD. 87.260.DO.00

**DIVISORE DI FLUSSO CON RACCORDI A 90°
SCARICO E TUBO DI DRENAGGIO**
*FLOW DIVIDER WITH 90° FITTINGS
DRAINAGE AND DRAIN HOSE*

COD. 87.260.00.00

DIVISORE DI FLUSSO A 4 STADI STANDARD
STANDARD 4 STAGES FLOW DIVIDER

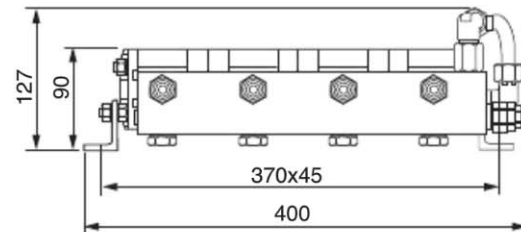


DIVISORE DI FLUSSO

Il divisore di flusso a 4 stadi, provvisto di valvole di azzeramento, consente l'adeguato apporto d'olio e la giusta sincronia ai cilindri centina.

FLOW DIVIDER

4 stages flow divider, with resetting valves, is the perfect solution for truck trailer's roof lifting applications.



COD.	Descrizione Description	A mm	B mm	C mm	D mm
A RICHIESTA UPON REQUEST	CILINDRO SEMPLICE EFFETTO SINGLE ACTING CYLINDER	600	674	-	-
		800	874	-	-
		1000	1074	-	-
87.300.30.02	CILINDRO DOPPIO EFFETTO DOUBLE ACTING CYLINDER	-	-	800	950
87.300.30.03	CILINDRO DOPPIO EFFETTO DOUBLE ACTING CYLINDER	-	-	1000	1150
87.300.30.04	CILINDRO DOPPIO EFFETTO DOUBLE ACTING CYLINDER	-	-	1200	1350
87.300.30.01	CILINDRO DOPPIO EFFETTO DOUBLE ACTING CYLINDER	-	-	1500	1650

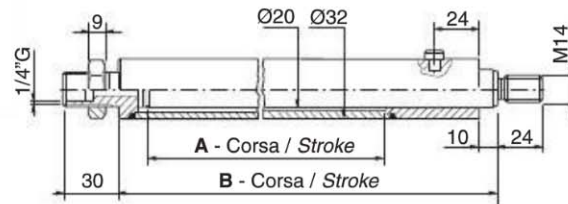
CILINDRI PER CENTINA

Cilindri tuffanti semplice effetto o a doppio effetto, progettati per veicoli centinati. A richiesta fornibili con clips di fissaggio DI 14.

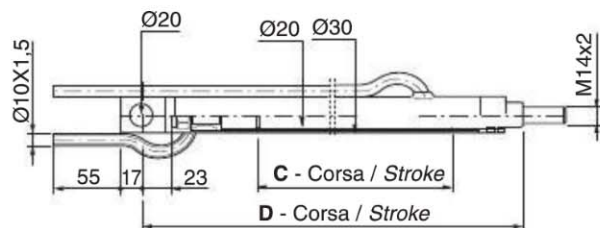
CYLINDERS FOR TRUCK TRAILER'S ROOF LIFTING

Single acting or double acting cylinders for truck trailer's roof lifting applications. Upon request available with fastening clips DI 14.

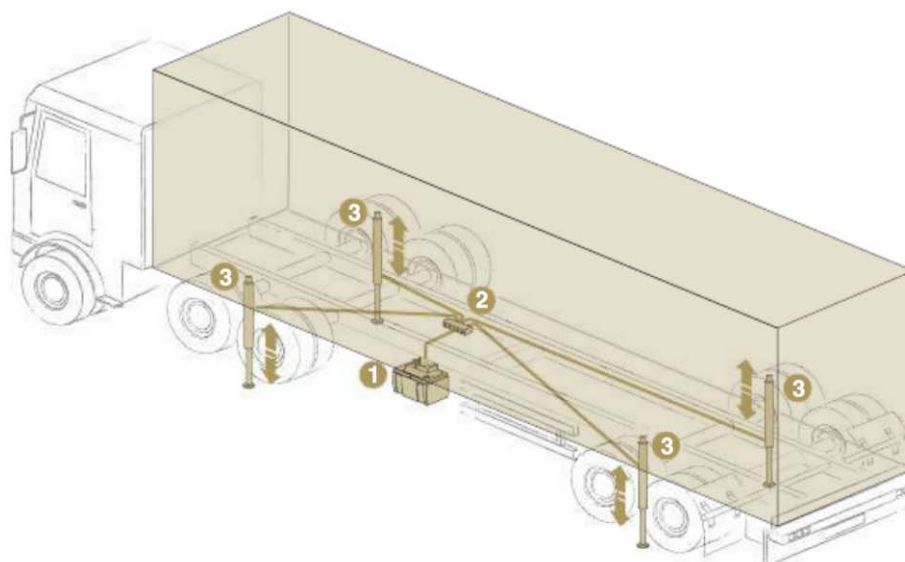
SEMPLICE EFFETTO / SINGLE ACTING



DOPPIO EFFETTO / DOUBLE ACTING



ESEMPIO DI FUNZIONAMENTO KIT SOLLEVAMENTO CASSA EXAMPLE OF TRUCK'S TRAILER LIFTING FUNCTION



KIT SOLLEVAMENTO CASSA

Consente di staccare il cassone di carico di un veicolo da trasporto merci, per le usuali operazioni di carico o scarico. Si permette quindi alla motrice di poter agganciare una cassa già pronta per il trasporto.

Le casse rimangono rialzate da terra per mezzo di sostegni meccanici. Il kit è composto da:

- 1 > n° 1 Minicentralina "COMPACT" 24V D.E. con pulsantiera, commutatore e cicalino
- 2 > n° 1 divisore di flusso a 4 stadi
- 3 > n° 4 cilindri a doppio effetto, con valvola di ritegno

TRAILER LIFTING KIT

It allows to remove the cargo box of a vehicle, for the usual loading or unloading operations. It then allows the tractor to hook a new body truck ready for transport.

The body trucks remain raised from the ground by means of mechanical supports.

The Kit is composed as follows:

- 1 > no. 1 "COMPACT" 24V S.A. Power Pack with remote control, on-off switch and buzzer
- 2 > no. 1 4-stages flow divider
- 3 > no. 4 double acting cylinders, with check valves

COD. 87.242.DE

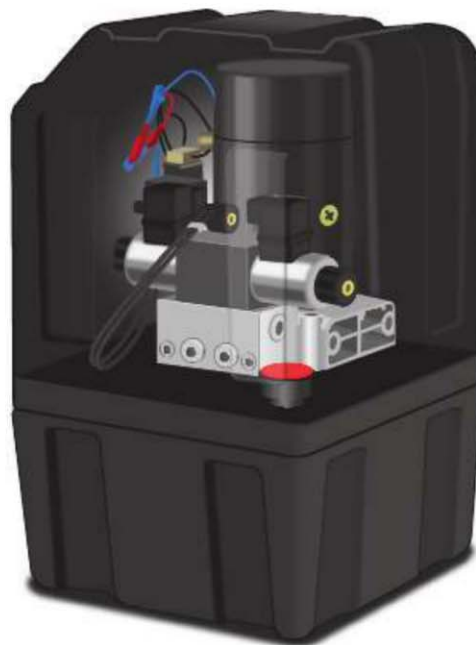
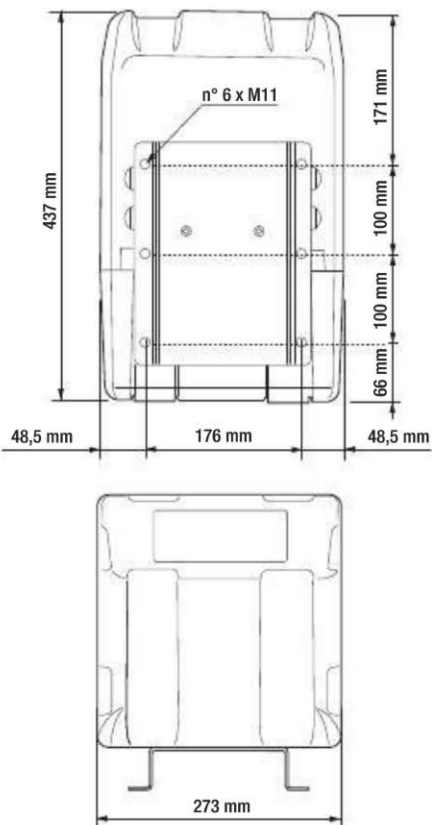
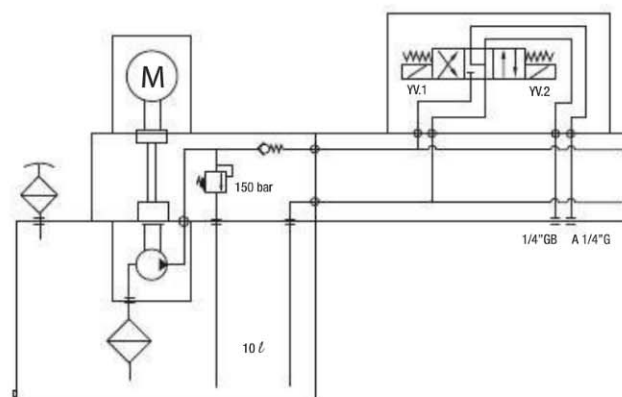
**MINICENTRALE 24V PER SOLLEVAMENTO CASSA A DOPPIO EFFETTO
24V DOUBLE ACTING POWER PACK****MINICENTRALE COMPACT HY10
per SCARRABILE SOLLEVAMENTO CASSA**

Minicentrale con motore CC da 24V 2000W S3, completo di termocoppia e teleruttore da 200A. Serbatoio da 10 litri in Termoplast con cuffia e supporto di montaggio. La centrale eroga 5, 6, 7 litri/min rispettivamente a 190,150 e 60 bar. Fornibile con pulsantiera cablata.

**HY10 MINI POWER PACK for
TRUCK'S TRAILER LIFTING**

Mini power pack with 24V 2000W S3 DC motor, completed of thermocouple and starting relay 200A. With 10 lt Termoplast plastic tank and mounting support. Mini power pack gives 5, 6, 7 lt/min at 190,150 and 60 bar.

Available with remote control.

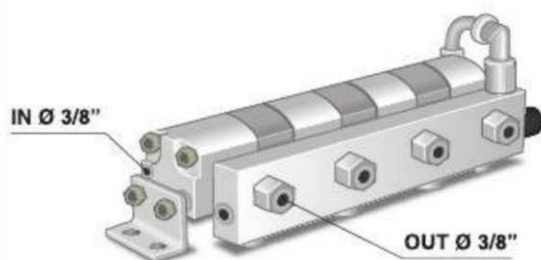
**SCHEMA IDRAULICO / HYDRAULIC SCHEMATIC**

COD. 87.260.DO.00

**DIVISORE DI FLUSSO CON RACCORDI A 90°
SCARICO E TUBO DI DRENAGGIO**
*FLOW DIVIDER WITH 90° FITTINGS
DRAINAGE AND DRAIN HOSE*

COD. 87.260.OO.00

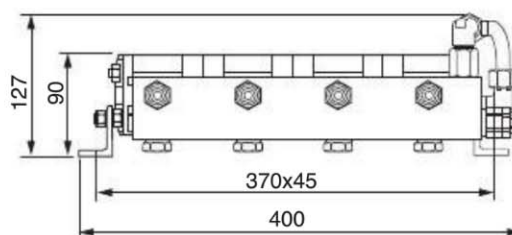
DIVISORE DI FLUSSO A 4 STADI STANDARD
STANDARD 4 STAGES FLOW DIVIDER

**DIVISORE DI FLUSSO**

Il divisore di flusso a 4 stadi, provvisto di valvole di azzeramento, consente l'adeguato apporto d'olio e la giusta sincronia ai cilindri sollevamento cassa.

FLOW DIVIDER

4 stages flow divider, with resetting valves, is the perfect solution for trailer lifting applications.



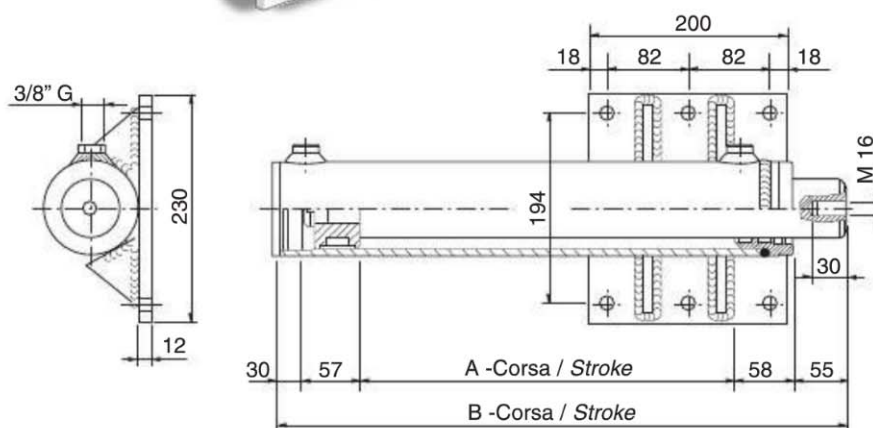
COD.	Descrizione Description	A mm	B mm
140CL10020001	CILINDRO DX RIGHT CYLINDER	380	580
140CL10020002	CILINDRO SX LEFT CYLINDER	380	580
140CL10020003	CILINDRO DX RIGHT CYLINDER	450	650
140CL10020004	CILINDRO SX LEFT CYLINDER	450	650

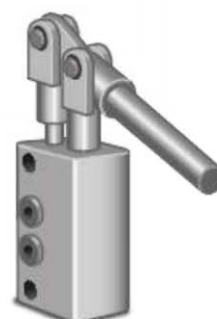
CILINDRI PER SCARRABILI SOLLEVAMENTO-CASSE

Cilindri a doppio effetto, completi di valvole a doppio ritegno pilotato.

CYLINDERS FOR BODY TRUCK LIFTING

Double acting cylinders, with double pilot check valves.



COD. 30.405.09**COMMUTATORE A CHIAVE**
ON-OFF SWITCH**COD.** 30.405.08**CICALINO CON STAFFE**
BUZZER WITH BRACKET**COD.** 187AT10020010**PULSANTIERA A DUE PULSANTI EPE CON CAVO 4M (7M)**
EPE REMOTE CONTROL 4 M (7M) WIRING**A RICHIESTA / UPON REQUEST****POMPA A MANO DI EMERGENZA 8 CC/CICLO**
EMERGENCY HAND PUMP 8 CC/CYCLE**COD.** 187AT10098007**PULSANTIERA S.E. CON CAVO LINEARE 7,5 M**
SINGLE ACTING REMOTE CONTROL WITH 7,5 M LINEAR WIRING**A RICHIESTA / UPON REQUEST****KIT RADIOCOMANDO CON PULSANTE DI EMERGENZA A 2 CH PER D.E. (S.E.)**
RADIO CONTROL 2 CH WITH EMERGENCY BUTTON FOR DOUBLE ACTING
(SINGLE ACTING)**A RICHIESTA / UPON REQUEST****PULSANTIERA S.E. CON CAVO LINEARE (5 M) + SPIRALATO (0,5M)**
SINGLE ACTING REMOTE CONTROL WITH LINEAR (5 M) + TWISTED (0,5 M) WIRING

