

### CODICE DI ORDINAZIONE / ORDERING CODE

# D15 X P X X C X X X

COMANDO SEZIONE 3  
(vedi "TABELLA VERSIONI")  
SECTION CONTROL 3  
(see "VERSION TABLE")

COMANDO SEZIONE 2 (vedi "TABELLA VERSIONI")  
SECTION CONTROL 2 (SEE "VERSION TABLE")

COMANDO SEZIONE 1 (vedi "TABELLA VERSIONI")  
SECTION CONTROL 1 (SEE "VERSION TABLE")

TARATURA AUSILIARIO / AUXILIARY SETTING

TARATURA PRINCIPALE (vedi "TABELLA TARATURA")  
MAIN SETTING (SEE "SETTING TABLE")

RACCORDO D'ENTRATA / INLET GAUGE

5 = 3/4" GAS (ATTACCO MASCHIO/MALE PORT)

7 = 1" GAS (ATTACCO MASCHIO STANDARD / STANDARD MALE PORT)

TIPO DISTRIBUTORE PRINCIPALE// PRINCIPAL DISTRIBUTOR TYPE

P = PNEUMATICO / PNEUMATIC

SEZIONI AGGIUNTIVE / SUPPLEMENTARY SECTIONS

1 = SEZIONE AGGIUNTIVA / SUPPLEMENTARY SECTION

2 = SEZIONI AGGIUNTIVE / SUPPLEMENTARY SECTIONS

3 = SEZIONI AGGIUNTIVE / SUPPLEMENTARY SECTIONS

5

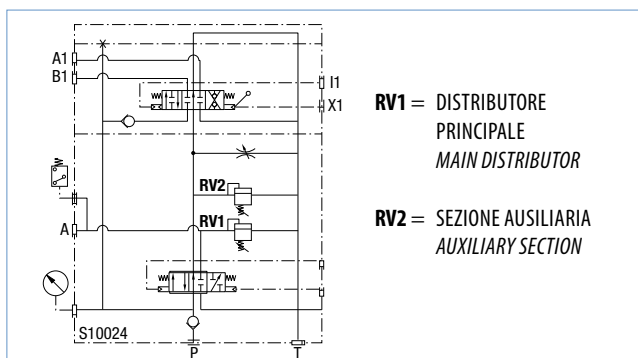
MODELLO / MODEL

### CARATTERISTICHE TECNICHE / TECHNICAL SPECIFICATIONS

Portata nominale <i>Flow rate</i>	Distributore principale <i>Main distributor</i>	150 l/min	Temperatura fluido °C (t) <i>Fluid temperature °C (t)</i>	-25° + 80°C
	Sezione ausiliaria <i>Auxiliary section</i>	60 l/min		
Pressione massima di lavoro <i>Max working pressure</i>		250 bar	Campo viscosità <i>Viscosity range</i>	12-100 cSt
Pressione massima di picco (<0.1 s) <i>Max peak pressure</i>		300 bar	Filtrazione / Filtering ISO 4406 $\beta_{x=75}$	20/17 25 $\mu$ m
Pressione massima sul T <i>T port max pressure</i>		30 bar	Peso <i>Weight</i>	5.8 kg
Pressione pneumatica massima <i>Max pneumatic pressure</i>		12 bar	Fluido olio minerale <i>Mineral oil</i>	ISO VG 46

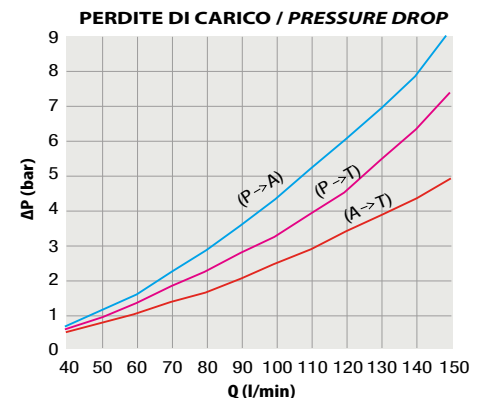
- Distributore da 150 l/min a comando pneumatico, per veicoli ribaltabili con sola motrice.
- Consente la salita, la discesa veloce e la discesa progressiva con comando pneumatico proporzionale.
- Sono incorporate la valvola di ritegno in ingresso e la valvola di massima pressione regolabile a richiesta 140-250 bar.
- Valvola di massima pressione per sezioni ausiliarie, regolabile a richiesta 140-250 bar.
- Regolatore di portata per sezioni ausiliarie.
- Sezioni ausiliarie da 1 a 3.

- *Pneumatic operated 150 l/min distributor, for tippers without trailer.*
- *It performs tipping, fast lowering or progressive lowering by means of progressive pneumatic control.*
- *It includes inlet check valve and adjustable relief valve. The relief valve range is from 140 to 250 bar.*
- *Relief valve for auxiliary sections, adjustable 140-250 bar (upon request).*
- *Flow regulator for auxiliary sections.*
- *Auxiliary sections from 1 to 3.*

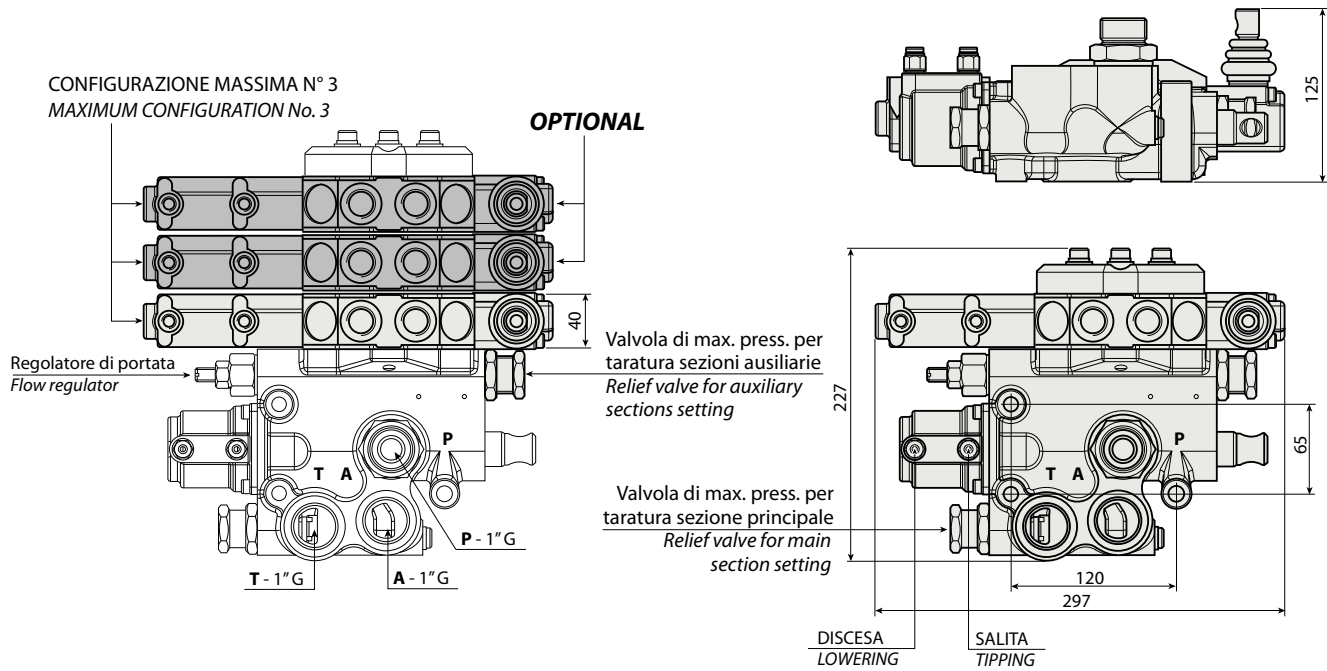


RILIEVI ESEGUITI CON OLIO  
ISO VG 46 A 50° C ( $\nu = 30$  cSt)

THE ABOVE SPECIFICATIONS  
REFER TO OIL TYPE ISO VG 46 AT  
50° C ( $\nu = 30$  cSt)



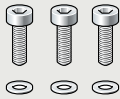
DIMENSIONI / DIMENSIONS



5

KIT PER FISSAGGIO AL TELAIO / CHASSIS MOUNTING KIT

**M8x80**



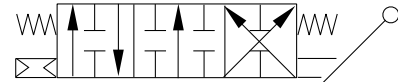
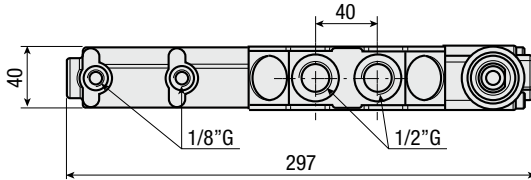
Serrare a coppia max 20 Nm ± 5  
Tightening torque max 20 Nm ± 5

Montare con frenafletti 243  
Assembly using threadlocker 243

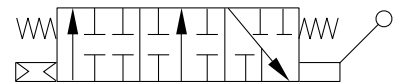
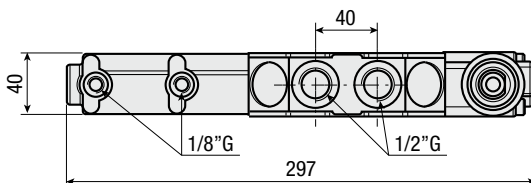
COD. 30KFD004000

TABELLA VERSIONI / VERSION TABLE

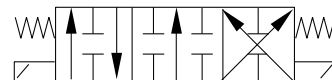
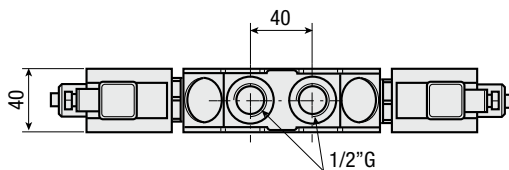
**F = PNEUMATICO DOPPIO EFFETTO / PNEUMATICAL DOUBLE ACTING**



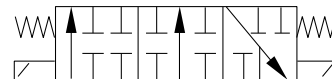
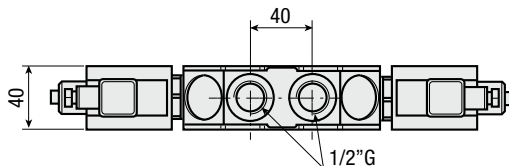
**P = PNEUMATICO SEMPLICE EFFETTO / PNEUMATICAL SINGLE ACTING**



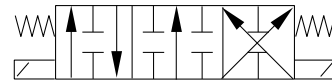
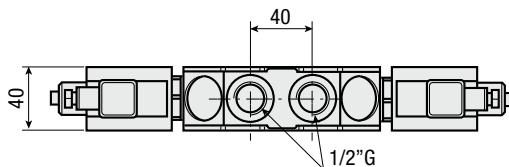
**E = ELETTRICO DOPPIO EFFETTO 24 VOLT / ELECTRICAL DOUBLE ACTING 24 VOLT**



**H = ELETTRICO SEMPLICE EFFETTO 24 VOLT / ELECTRICAL SINGLE ACTING 24 VOLT**



**G = ELETTRICO DOPPIO EFFETTO 12 VOLT / ELECTRICAL DOUBLE ACTING 12 VOLT**



**M = ELETTRICO SEMPLICE EFFETTO 12 VOLT / ELECTRICAL SINGLE ACTING 12 VOLT**

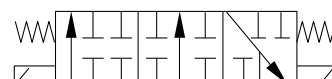
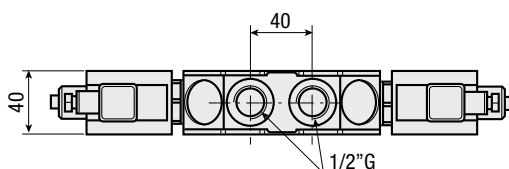


TABELLA TARATURE / SETTING TABLE

TARATURA DISTRIBUTORE / DISTRIBUTOR SETTING bar			
<b>A</b> = 100	<b>B</b> = 120	<b>C</b> = 130	<b>D</b> = 140
<b>E</b> = 150	<b>F</b> = 160	<b>G</b> = 170	<b>H</b> = 180
<b>I</b> = 190	<b>J</b> = 200	<b>K</b> = 210	<b>L</b> = 220
<b>M</b> = 230	<b>N</b> = 240	<b>P</b> = 250	<b>Q</b> = 260
<b>R</b> = 270	<b>S</b> = 280	<b>T</b> = 290	<b>U</b> = 300
<b>V</b> = 310	<b>W</b> = 320		
<b>1</b> = 150/250		<b>2</b> = 140/220	

ESEMPIO DI UTILIZZO / EXAMPLE OF APPLICATION

