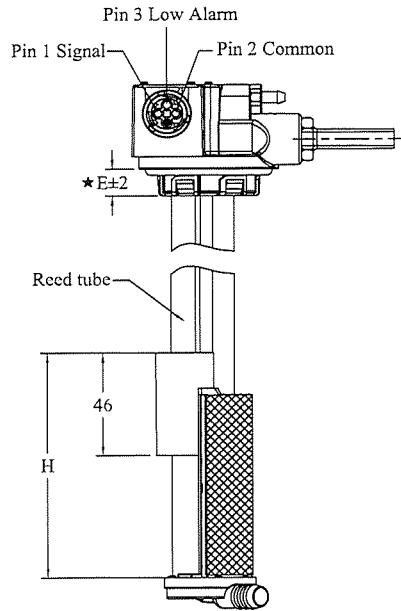
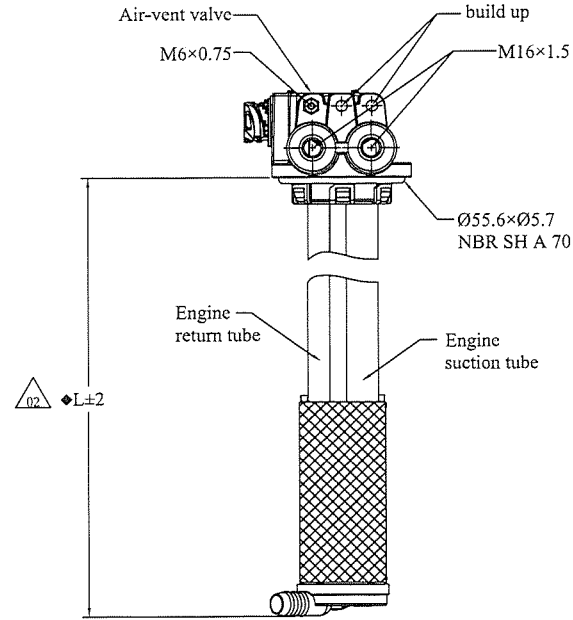


CONFIDENTIAL

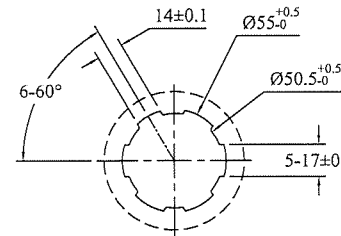
SPECIAL/KEY PRODUCT CHARACTERISTICS NOTATION

1. "⦿" Symbol for critical characteristics related to product safety and/or regulatory compliance.
2. "◆" Symbol for internal - designated significant characteristics related to customer usage.
3. "★" Symbol for internal - designated significant characteristics based on the risk and effect level without relating to customer usage.
4. Refer to attached table for customer designated special characteristic symbols when applicable.

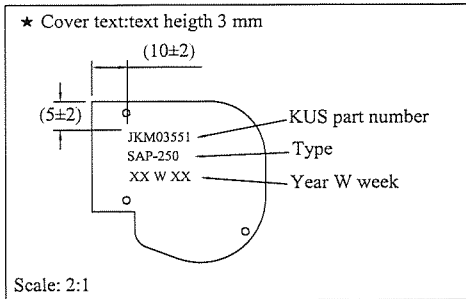
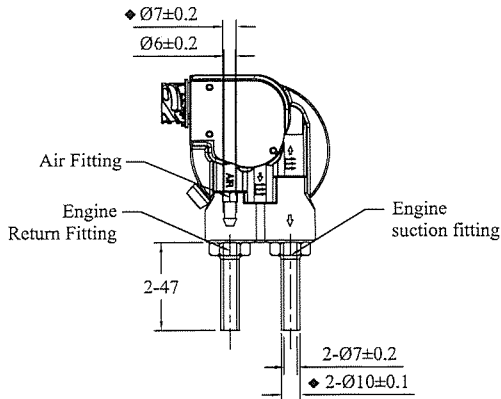
ISSUE	DATE	ZONE	REVISION HISTORY	DRAW
01	Aug.06.2019		New drawing	Tan/WXL
02	Aug.12.2019	ES.D1	Updating Sensor Length	Tan/WXL



- Technical requirements:
1. Air valve fitting and the heater suction/ return fitting torque: 2.8~3.6N.m;
 2. Engine suction/ return torque: 20 ± 2N.m;
 3. Working temperature: -40 ~ 85°C;
 4. Medium : diesel;
 - ◆ 5. Air valve unit assembly:
 - air outlet valve open at overpressure of 50~ 200mbar;
 - air inlet valve open at negative pressure of 3~ 15mbar.
 6. Air tube must be connected with air filter or dust-free space to avoid dust going into the valve and block it which causes the failure of the product;
 7. IP 67;
 8. Critical controlled dimensions are marked;
 9. Electrical characteristics:
 - Rating power: P=125mW;
 - Working current: I max=300mA;
 10. "H" value in the table is the data that float moves downward from top of the sensor;

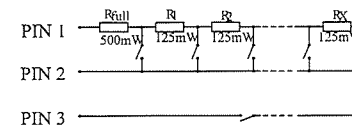


Tank interface dimension
T=2.0~2.5mm



CONNECTOR

PIN 1	Signal
PIN 2	Common
PIN 3	Low Alarm
PIN 4	NOT CONNECTED, SEALED



JKM03551	
L=250	
E=14	
RUA:R010825	
FLOAT:021085	
H(mm)	Rout(ohm)
>202	0.0
202	7.2
181	40.2
160	73.2
139	116.2
118	159.2
110	ALARM
97	202.2
76	315.2
55	345.2

Tolerance. float descending : H±5mm						
Resistance tolerance at 20°C : ±(1+R*1.5%) ohm						
TOLERANCE CLASS	FROM 0.5 UP TO 3	OVER 3 UP TO 6	OVER 6 UP TO 30	OVER 30 UP TO 120	OVER 120 UP TO 400	OVER 400 UP TO 1000
ISO 2768C	±0.2	±0.3	±0.5	±0.8	±1.2	±2

MATERIAL:	COLOUR:	PROJECT:
		SAP
ENGINEERED:	Aug.12.2019	PART NAME:
Tan/WXL		FUEL TANK SENSOR
CHECKED:		DRAWING NO:
		JKM03551
APPROVED:		ISSUE:
		02
PROJECTION:	CUSTOMER NO:	
SCALE: 1:1	SIZE: A3	UNIT: mm
		SHEET NO: 1 OF 1