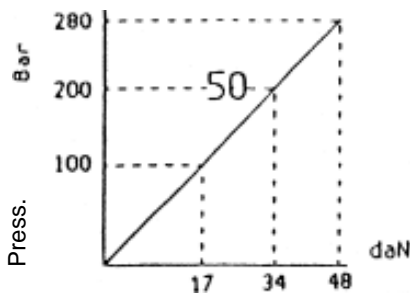




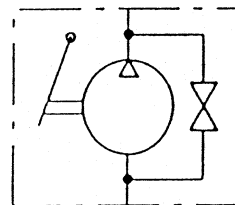
## HAND PUMP SURFACE FIXING

# 4.1.9.6.050

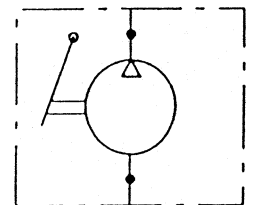
CODE	DISPLACEMENT cm <sup>3</sup> / cycle	PRESSURE Max bar	WEIGHT Kg.
4.1.9.6.050.X.00	43	280	3,8



4.1.9.6.050.0.00



4.1.9.6.050.1.00



Working effort with 1 mt. hand lever

### 4.1.9.6.050.X.00

BASIC SERIAL NUMBER \_\_\_\_\_

VERSION

**0** = STANDARD

**1** = WITHOUT RELEASE HANDKNOB

## GENERAL FEATURES

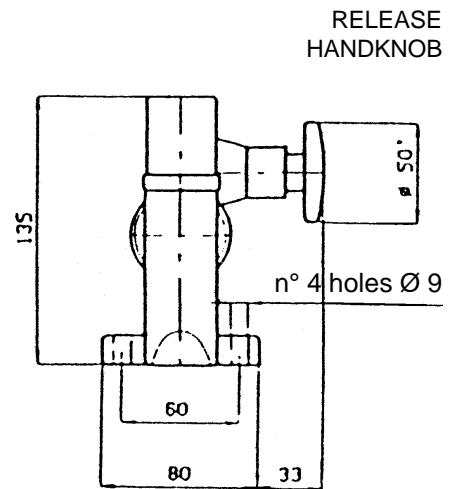
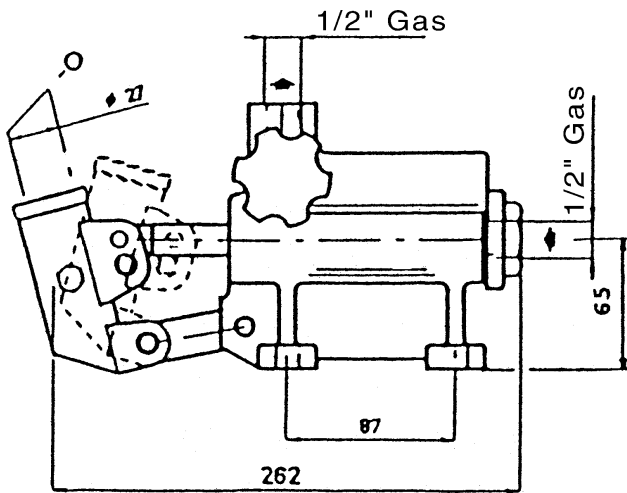
The hand pumps have specially been studied expressly for high performances and reliability; they are used in different sectors: transport, industry and agriculture.

The hand pumps can be installed both in horizontal and vertical position.

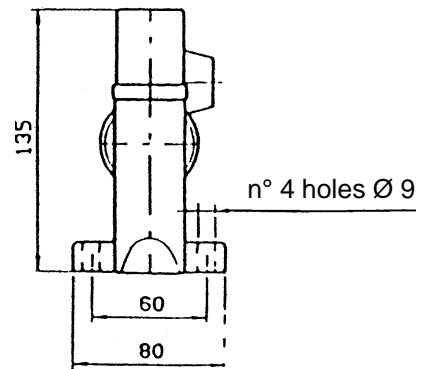
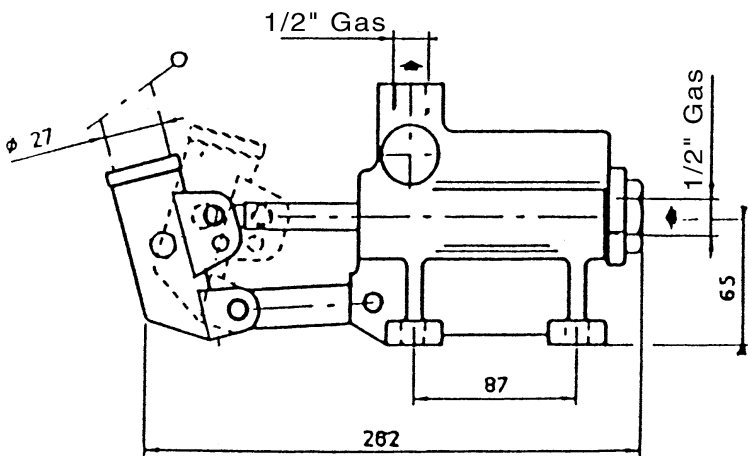
### DIRECTIONS FOR USE.

- Oil** - Use only ISO 6743/4 (DIN 51524) hydraulic mineral oil
- Viscosity** - The viscosity must be according to ISO 3448 (DIN 51519) standards.  
 Minimum viscosity: ISO VG 15  
 Maximum viscosity: ISO VG 100  
 Advised viscosity: ISO VG 46
- Filtration contamination** - The main cause of the bad working of hydraulic installations is the excessive fluid contamination.  
 Advised filtration: 50 - 80 microns.  
 Contamination class: 18/14 ISO 4406 (9 NAS 1638)
- Temperature** - Working temperature: from - 20° C to + 80° C

Code 4.1.9.6.050.0.00 - Hand pump **WITH** release handknob



Code 4.1.9.6.050.1.00 - Hand pump **WITHOUT** release handknob



ON REQUEST: **ROUN-DED TYPE LEVER COD. 2.99.034.0000**  
**RECTANGULAR TYPE LEVER COD. 2.99.201.0000**

