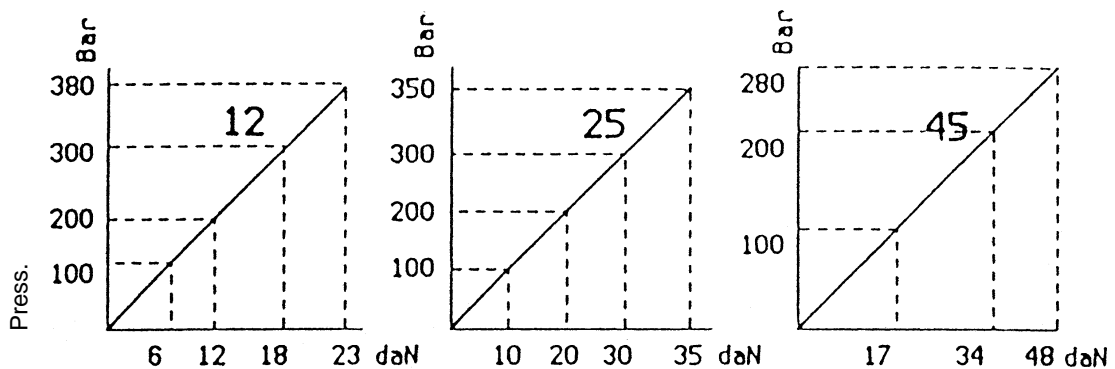
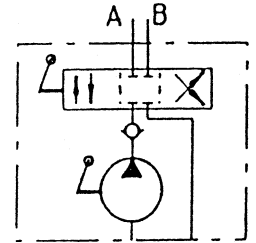




## HAND PUMP WITH TWO POSITIONS TWO WAY CONTROL VALVE

## 4.1.9.4

| CODE             | DISPLACEMENT<br>cm <sup>3</sup> / cycle | PRESSURE Max<br>bar | WEIGHT<br>Kg. |
|------------------|---|---------------------|---------------|
| 4.1.9.4.012.0.00 | 12                                      | 380                 | 3,0           |
| 4.1.9.4.025.0.00 | 25                                      | 350                 | 3,1           |
| 4.1.9.4.045.0.00 | 43                                      | 280                 | 3,2           |



Working effort with 1 mt. hand lever

### 4.1.9.4.XXX.0.00

BASIC SERIAL NUMBER \_\_\_\_\_ DISPLACEMENT \_\_\_\_\_

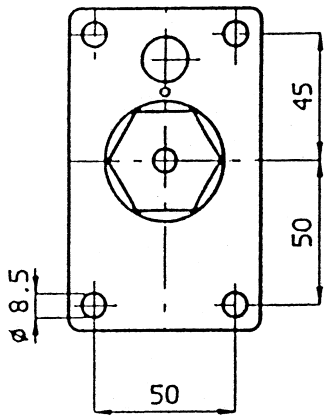
### GENERAL FEATURES

The hand pumps have specially been studied expressly for high performances and reliability; they are used in different sectors: transport, industry and agriculture.

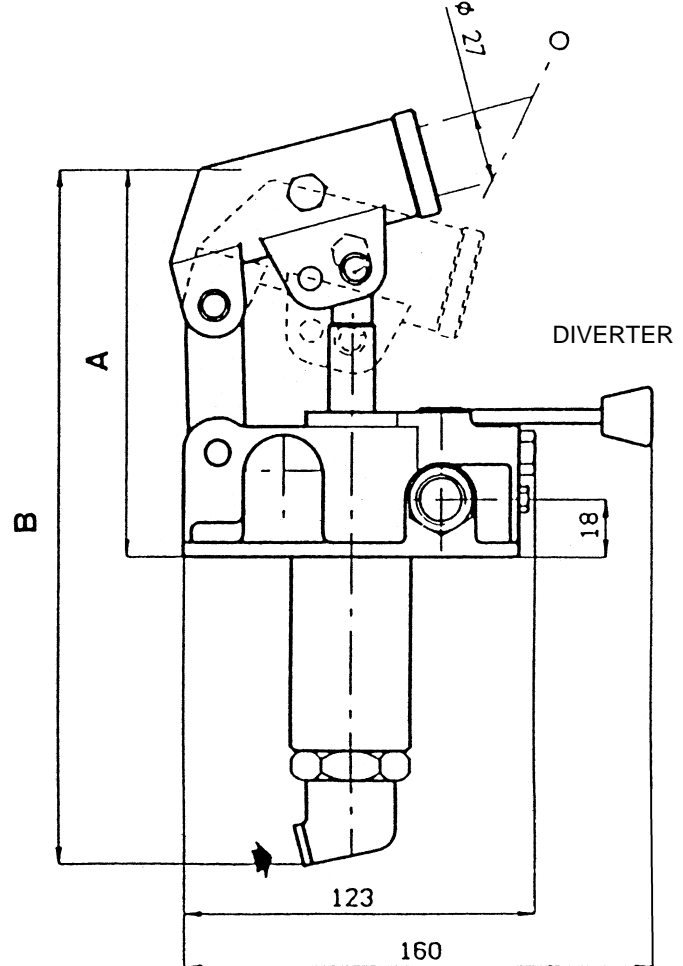
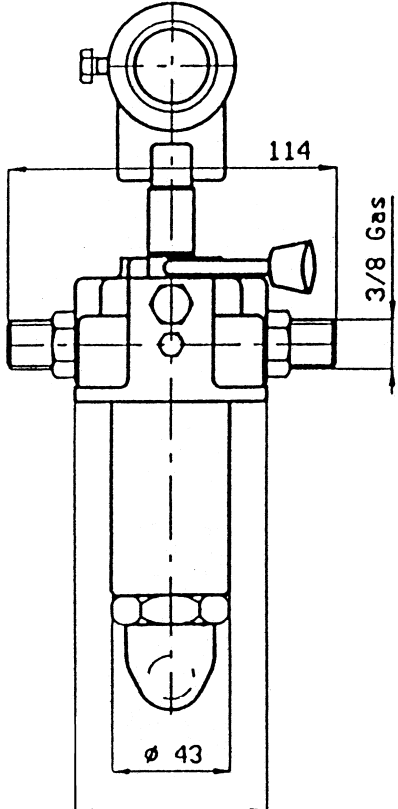
The hand pumps can be installed both in horizontal and vertical position.

### DIRECTIONS FOR USE.

- Oil** - Use only ISO 6743/4 (DIN 51524) hydraulic mineral oil
- Viscosity** - The viscosity must be according to ISO 3448 (DIN 51519) standards.  
 Minimum viscosity: ISO VG 15  
 Maximum viscosity: ISO VG 100  
 Advised viscosity: ISO VG 46
- Filtration contamination** - The main cause of the bad working of hydraulic installations is the excessive fluid contamination.  
 Advised filtration: 50 - 80 microns.  
 Contamination class: 18/14 ISO 4406 (9 NAS 1638)
- Temperature** - Working temperature: from - 20° C to + 80° C



| CODE             | DIMENSIONS |     |
|------------------|------------|-----|
|                  | A          | B   |
| 4.1.9.4.012.0.00 | 141        | 257 |
| 4.1.9.4.025.0.00 | 141        | 257 |
| 4.1.9.4.045.0.00 | 163        | 272 |



ON REQUEST: ROUN-DED TYPE LEVER COD. 2.99.034.0000  
 RECTANGULAR TYPE LEVER COD. 2.99.201.0000

