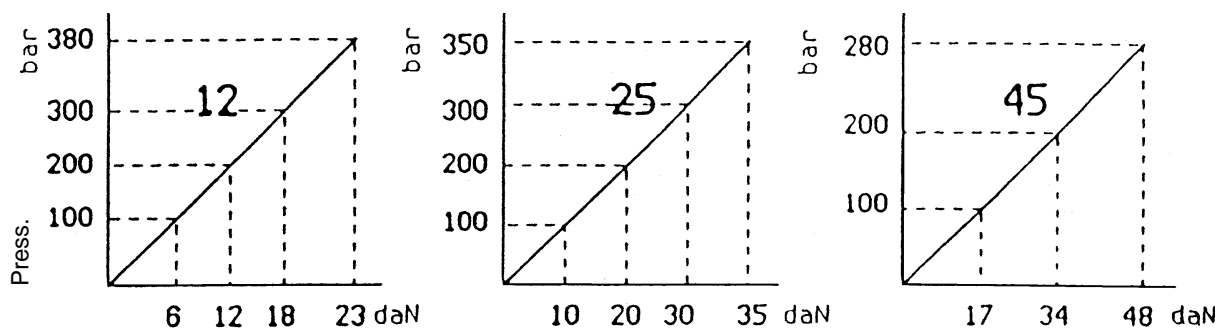
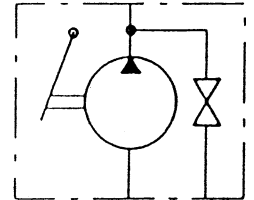


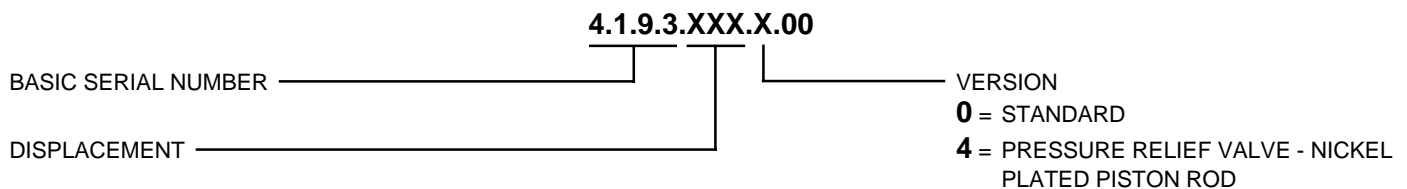


HAND PUMP 4.1.9.3

CODE	DISPLACEMENT cm ³ / cycle	PRESSURE Max bar	WEIGHT Kg.
4.1.9.3.012.X.00	12	380	3,0
4.1.9.3.025.0.00	25	350	3,1
4.1.9.3.045.0.00	43	280	3,2



Working effort with 1 mt. hand lever



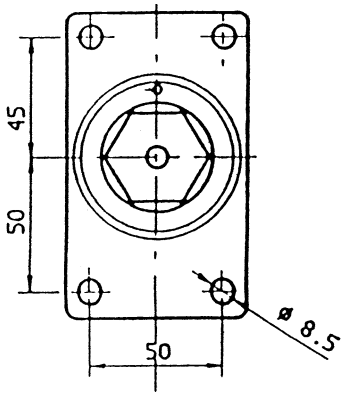
GENERAL FEATURES

The hand pumps have specially been studied expressly for high performances and reliability; they are used in different sectors: transport, industry and agriculture.

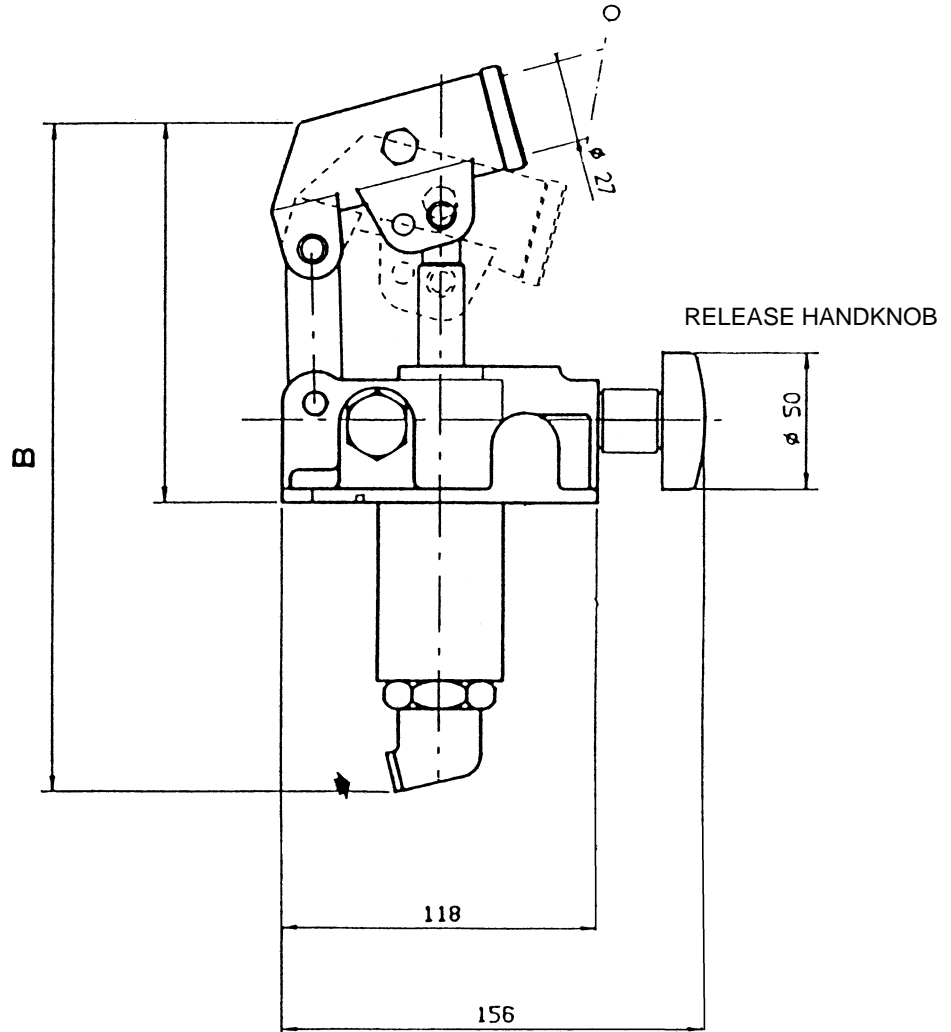
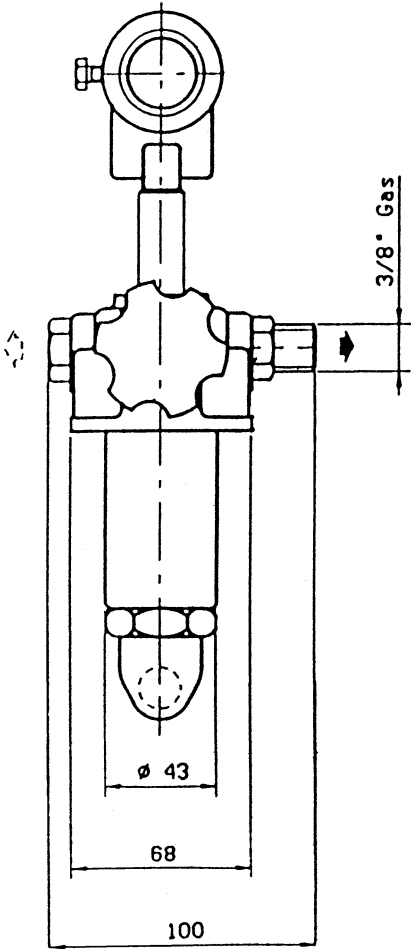
The hand pumps can be installed both in horizontal and vertical position.

DIRECTIONS FOR USE.

- Oil**
 - Use only ISO 6743/4 (DIN 51524) hydraulic mineral oil
- Viscosity**
 - The viscosity must be according to ISO 3448 (DIN 51519) standards.
 - Minimum viscosity: ISO VG 15
 - Maximum viscosity: ISO VG 100
 - Advised viscosity: ISO VG 46
- Filtration contamination**
 - The main cause of the bad working of hydraulic installations is the excessive fluid contamination.
 - Advised filtration: 50 - 80 microns.
 - Contamination class: 18/14 ISO 4406 (9 NAS 1638)
- Temperature**
 - Working temperature: from - 20° C to + 80° C



CODE	DIMENSIONS	
	A	B
4.1.9.3.012.X.00	141	257
4.1.9.3.025.0.00	141	257
4.1.9.3.045.0.00	163	272



ON REQUEST: **ROUN-DED TYPE LEVER COD. 2.99.034.0000**
RECTANGULAR TYPE LEVER COD. 2.99.201.0000

