

SPLITTER GEARBOX FOR ISO 4 BOLT PUMPS

3.4.2.5.

3.4.2.6.



The splitter gearbox is a gearbox which allows multiple outputs from a single input, which can be used for:

- forestry and grab cranes with two separate hydraulic circuits
- flour, grane, cement, etc. Tank where a hydraulic pump and compressor are needed to tip and blow
- or any other application where various separate drives are required.

Depending on which unit is selected it is possible to increase or reduce output speed if required. However a 1:1 ratio version is available.

3.4.2.X.X.0.0.0.00

BASIC SERIAL NUMBER

- 5.1** = RATIO **1.52:1** - SLOW SHAFT 100 KGM, FAST SHAFT 66 KGM
- 5.2** = RATIO **0.66:1** - SLOW SHAFT 100 KGM, FAST SHAFT 66 KGM
- 6.0** = RATIO **1:1** - 95 KGM

ASSEMBLY

As a rule the splitter gearbox is connected to gearbox pto's, of suitable characteristics, by means of a remote transmission.

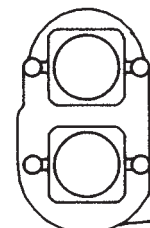
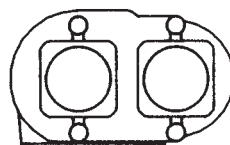
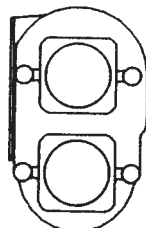
The air pocket is usually positioned, for the splitter gearbox to function, in horizontal.

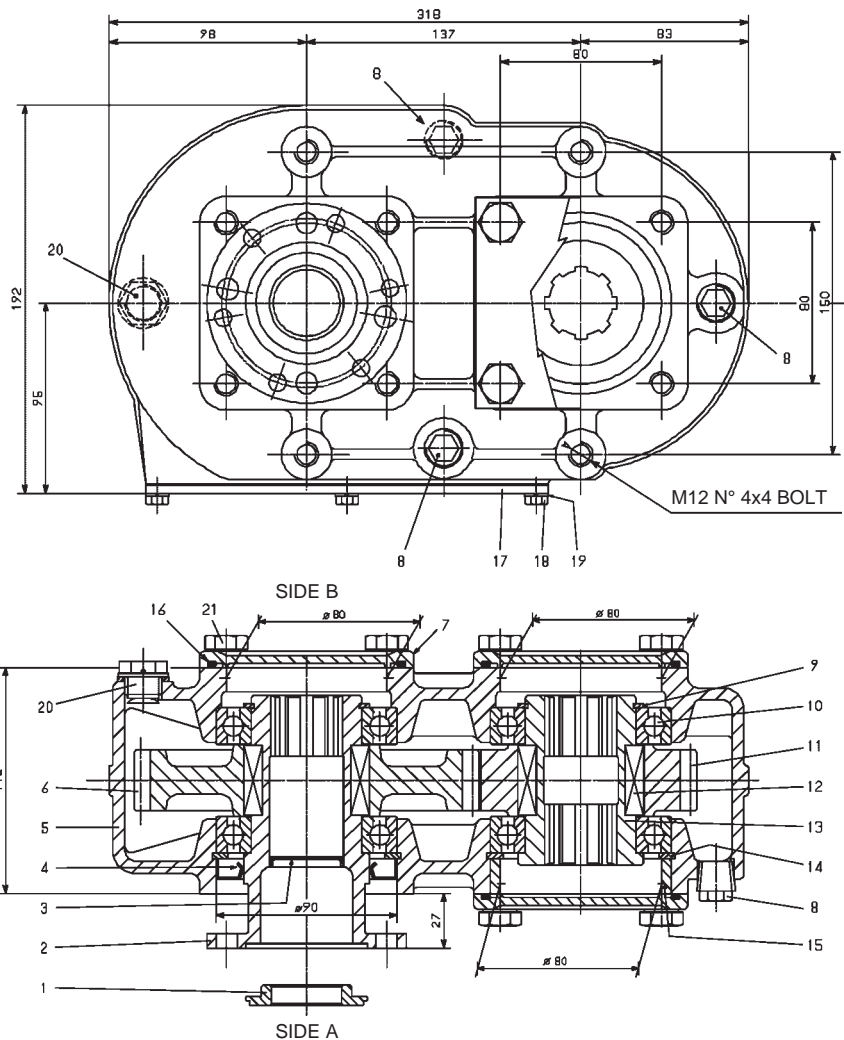
For every other position, fit the air pocket in the most suitable hole of the four available.

NOTE

For the torque value on the input shaft it is necessary to multiply the torque induced on the output shaft for the selected ratio (1.52 or 0.66).

POSSIBLE INSTALLATIONS

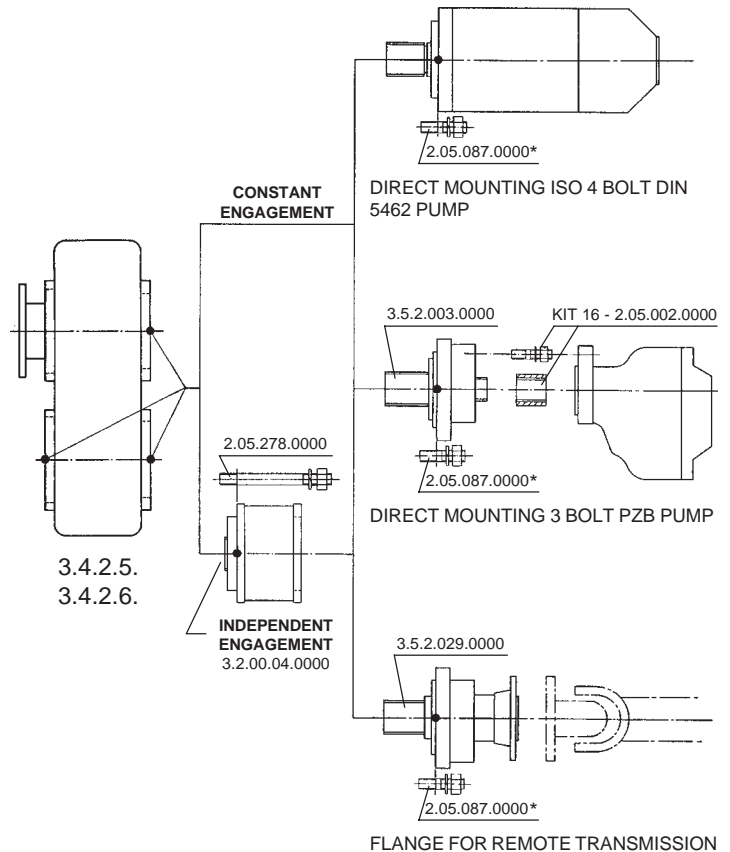




FILL WITH 0,5 Lt. SAE 80W90 OIL

REF.	CODE	DESCRIPTION	QT.
1	1.27.02.103.00	Centering ring SPICER 1300/DIN 10	1
2	1.13.05.044.00	Shaft with flange	1
3	0.12.01.040.00	Screw plug 37x5	1
4	0.08.01.074.00	Seal 62x90x10	1
5	1.01.50.006.00	Housing	1
6	1.11.10.063.00	Gear 47 T (3.4.2.5.)	1
	1.11.10.105.00	Gear 39 T (3.4.2.6.)	
7	1.24.01.095.00	Screw plug	3
8	0.12.01.049.00	Plug M18x1,5 FIAT 1/43236/11	3
9	0.07.01.024.00	Circlip 55e UNI 7435	2
10	0.10.01.036.00	Bearing 6011	4
11	1.11.10.064.00	Gear 31 T (3.4.2.5.)	1
	1.11.10.105.00	Gear 39 T (3.4.2.6.)	
12	0.06.01.017.00	Feather key A14x9x35 UNI 6604	4
13	1.13.02.035.00	Shaft	1
14	0.07.02.017.00	Circlip 90i UNI 7437	2
15	1.27.02.101.00	Centering ring	1
16	0.08.02.125.00	O-Ring OR 4362	3
17	1.24.02.036.00	Cover	1
18	0.01.01.011.00	Capscrew TE M6x6 UNI 5739 CL RES 8.8	6
19	0.04.02.001.00	Lockwasher 6,4 UNI 1751	6
20	0.12.01.038.00	Air pocket with gasket TCSF 1815	1
21	0.01.01.081.00	Capscrew TE M12x20 UNI 5739 CL RES 8.8	12

POSSIBLE OUTPUT APPLICATIONS



* ONLY REQUIRED FOR CONSTANT ENGAGEMENT