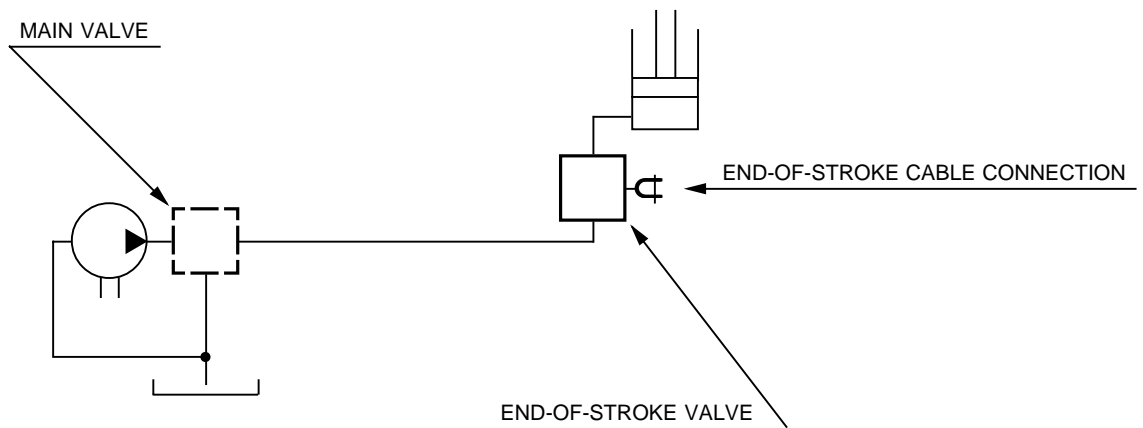
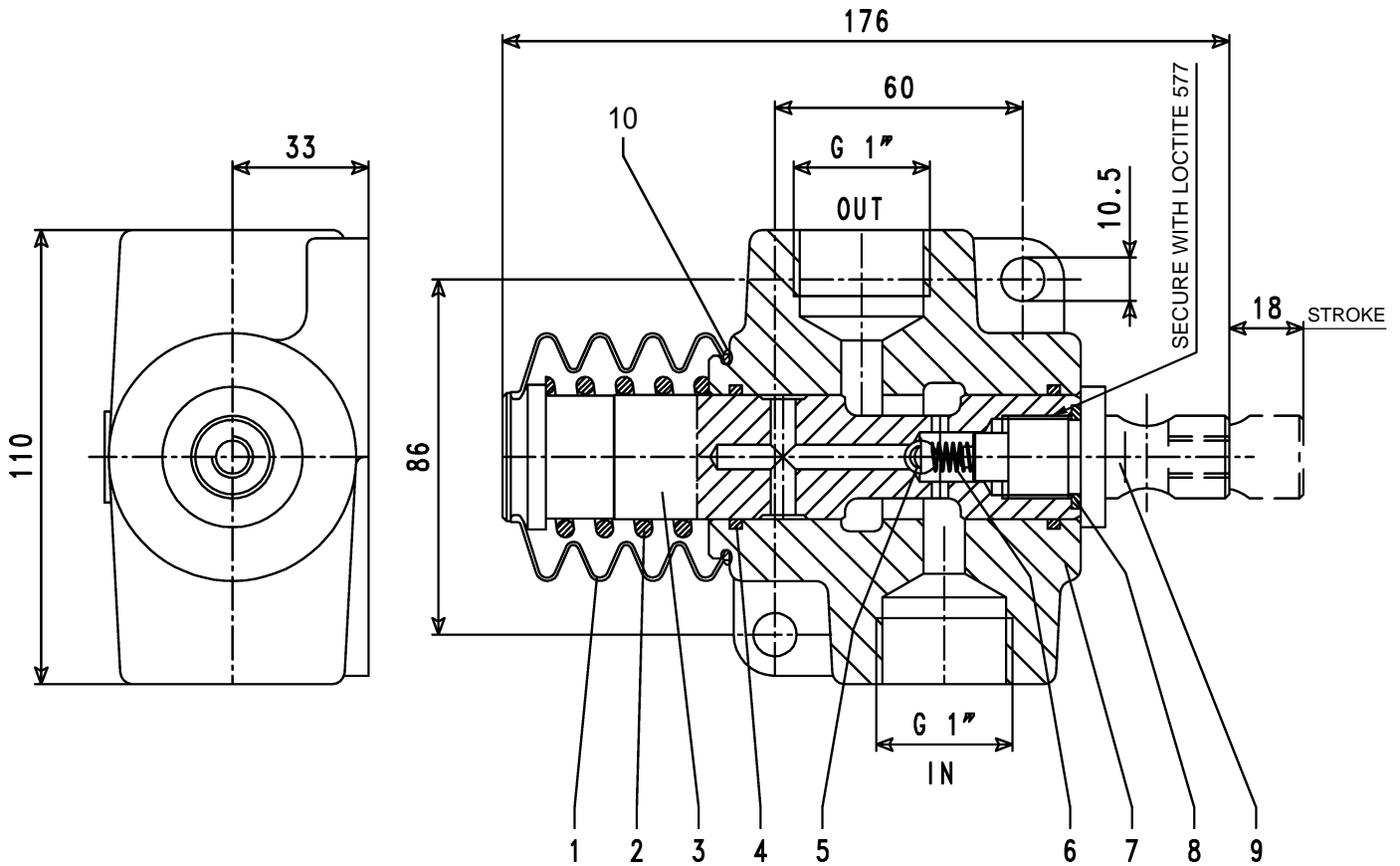


2 way one line system knock-off valve.  
Mechanically operated.  
Delivery up to 200 litres/min.  
Pressure max.: 350 bar.

WEIGHT: kg. 3,3

**APPLICATION DIAGRAM**





REF.	CODE	DESCRIPTION	QT.
1	1.99.00.112.00	Rubber bellow	1
2	1.28.01.067.00	Coil spring	1
3	1.15.00.073.00	Spool	1
4	0.08.02.064.00	O-Ring OR 3118	2
5	0.11.01.001.00	Ball 5/16"	1
6	1.28.01.063.00	Coil spring	1
7	1.06.03.004.00	Body	1
8	0.08.02.014.00	O-Ring OR 3081	1
9	1.30.03.024.00	Retainer	1
10	0.08.02.030.00	O-Ring OR 3168	1