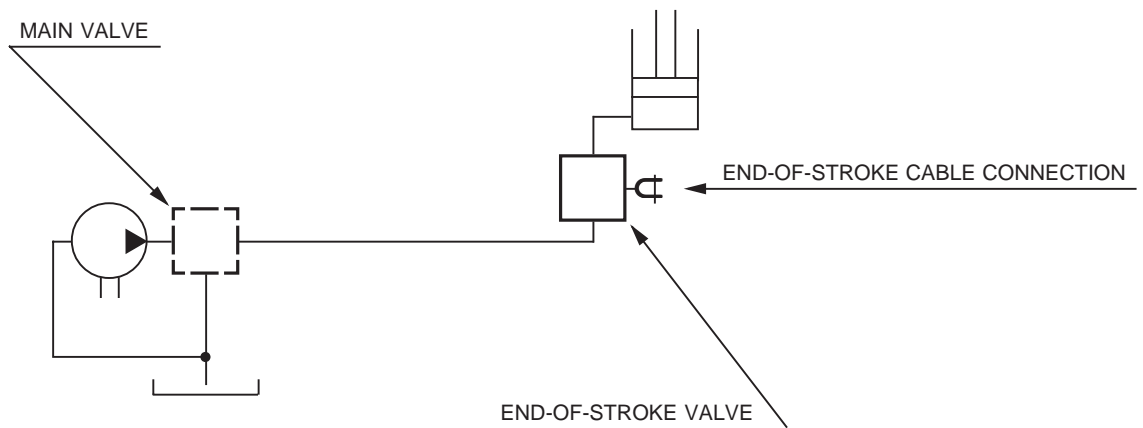
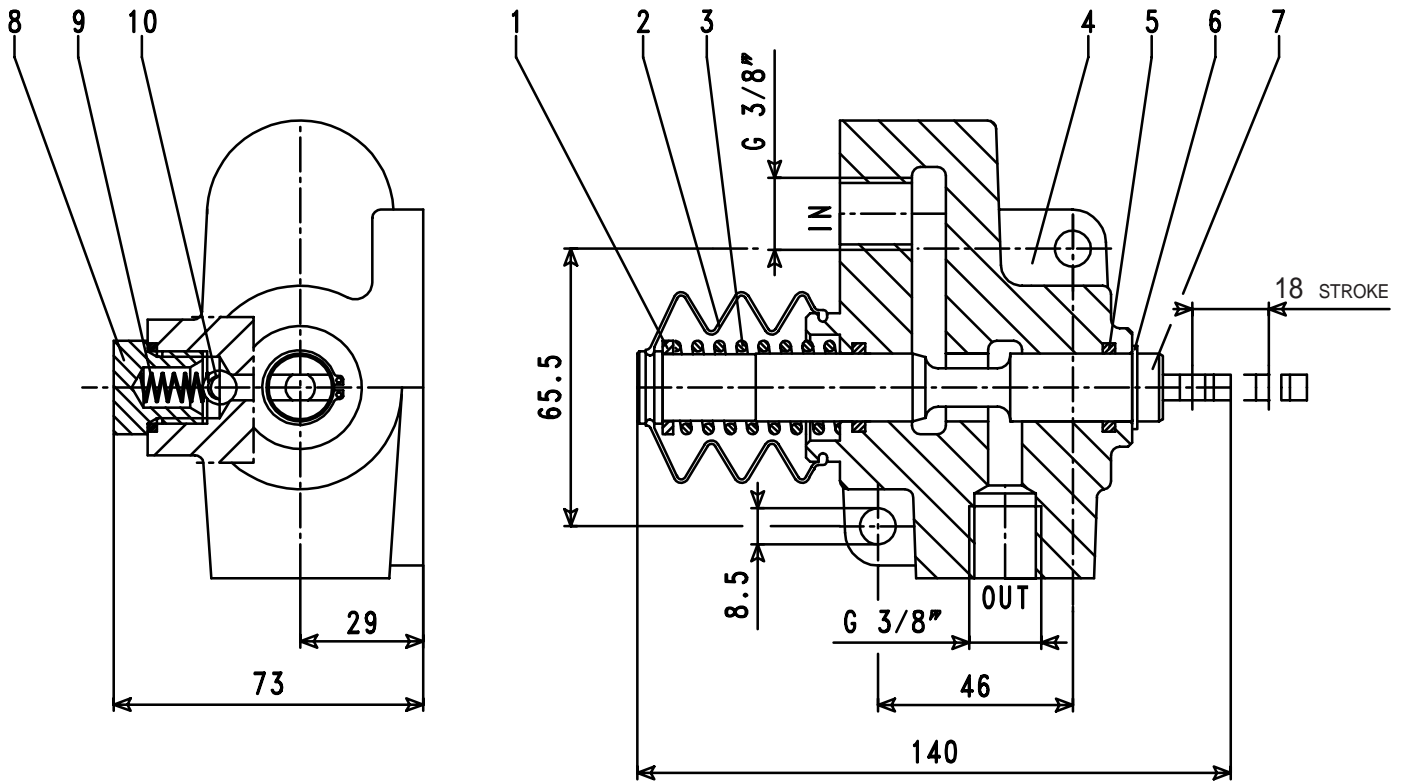


2 way one line system knock-off valve.
Mechanically operated.
Delivery up to 50 litres/min.
Pressure max.: 350 bar.

WEIGHT: kg. 1,4

APPLICATION DIAGRAM





| REF. | CODE | DESCRIPTION | QT. |
|------|----------------|-----------------------|-----|
| 1 | 1.27.02.062.00 | Ring 3/8"-3/4" | 1 |
| 2 | 1.99.00.018.00 | Rubber bellow DOP19/6 | 1 |
| 3 | 1.28.01.064.00 | Coil spring | 1 |
| 4 | 1.06.03.003.00 | Body V.F.C. 3/8" | 1 |
| 5 | 0.08.02.031.00 | O-Ring OR 121 | 3 |
| 6 | 0.07.01.014.00 | Circlip 16e UNI 7435 | 1 |
| 7 | 1.15.00.029.00 | Spool | 1 |
| 8 | 0.12.01.054.00 | Retainer 3/8" | 1 |
| 9 | 1.28.01.063.00 | Coil spring | 1 |
| 10 | 0.11.01.001.00 | Ball 5/16" | 1 |