

OIL TANKS FOR HAND PUMPS



TECHNICAL CATALOGUE

CONTENTS

GENERAL INFORMATION.....	2
THE RANGE	2
FIELDS OF APPLICATIONS	2
RELIABILITY	2
INSTALLATION AND MAINTENANCE.....	3
<i>General working conditions</i>	3
TANK INSTALLATION	3
MAINTENANCE.....	3
DIMENSIONS AND PART NUMBERS.....	4
WARNING.....	4
Table 1 (Application examples)	2
Table 2 (Tank specifications and part numbers)	4
Picture 2 (Tank Positioning)	3
Picture 3 (Oil seal checking).....	3
Picture 4 (Tank dimensions).....	4

GENERAL INFORMATION

PZB S.p.A., thanks to her long-lasting experience gained in the field of hand-pump applications developed a new range of oil tanks showing a brand new and modern design matching a very high performance level.

Upon request, it is possible to manufacture customized versions and models and it is also possible to supply them as a "KIT" along with our hand pump and hydraulic cylinder, hoses and connectors.

The flange on the tank is matching most of the hand pumps present on the market today.

THE RANGE

2 – 3 – 5 Liters capacities are available.

FIELDS OF APPLICATIONS

There is a wide choice of applications for these tanks and they range from INDUSTRY, AGRICULTURE, TRANSPORTATIONS up to Military and NAVAL .

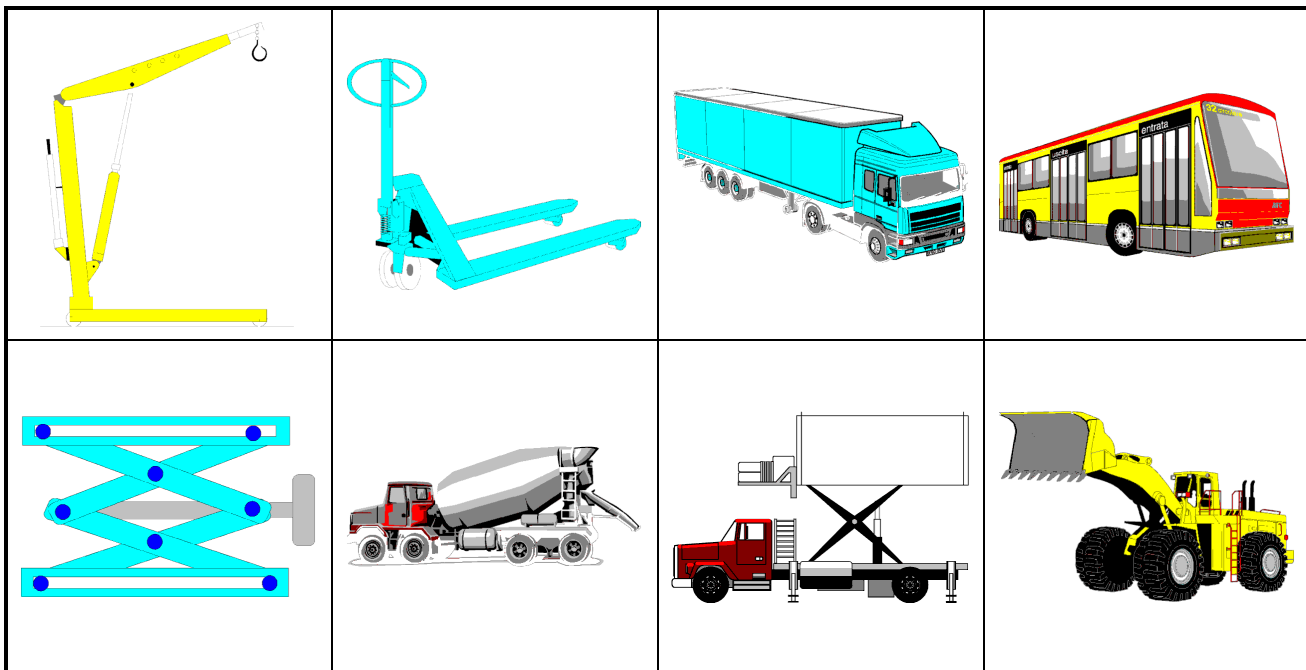


Table1 (Application examples)

RELIABILITY

The accurate design followed by exhaustive "on spot" and laboratory tests enabled us to develop a highly reliable and long lasting product.

Each and every component of our tank is protected against corrosion and special sealing prevents any possible leakage.

Tank body is split in two parts:

top half made of a special aluminium cast;

bottom half made out of a special moulded resin which is also shock resistant particularly insensitive to sharp temperature changes and oil aggressive actions.

INSTALLATION AND MAINTENANCE

GENERAL WORKING CONDITIONS

Our tanks can be used with a wide temperature range from -20°C up to $+100^{\circ}\text{C}$ along with good quality mineral base hydraulic oil.

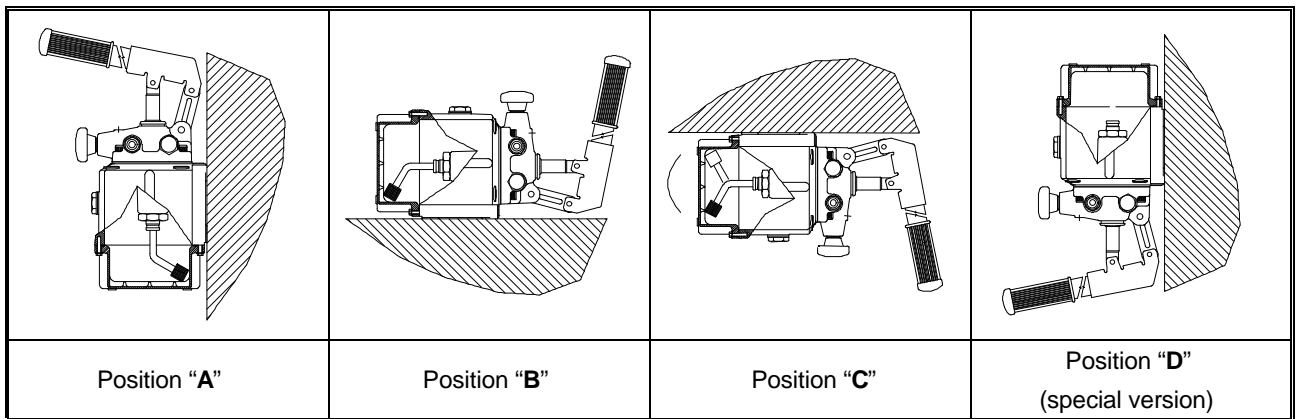
Special versions of our tanks to be used outside the above mentioned temperature range and / or with different media can be prepared to match the special required working conditions (ie. At low temperature around -45°C or to be used with agricultural liquids).

Our after sales department is at your disposal to help you in choosing the most suitable pump to match your requirements.

TANK INSTALLATION

Mounting positions "A" and "B" in table 2 are standard. In case position "C" will be chosen, before starting the installation it is necessary to invert the position of the exhaustion fitting on tank top.

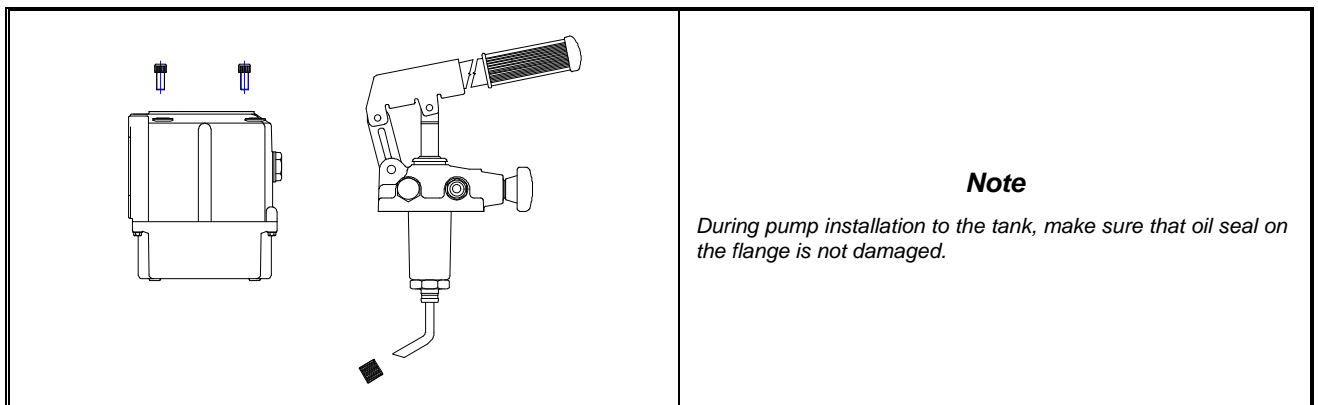
In case position "D" will be chosen, it is necessary to order the version with modified bottom body half.



Picture 2 (Tank Positioning)

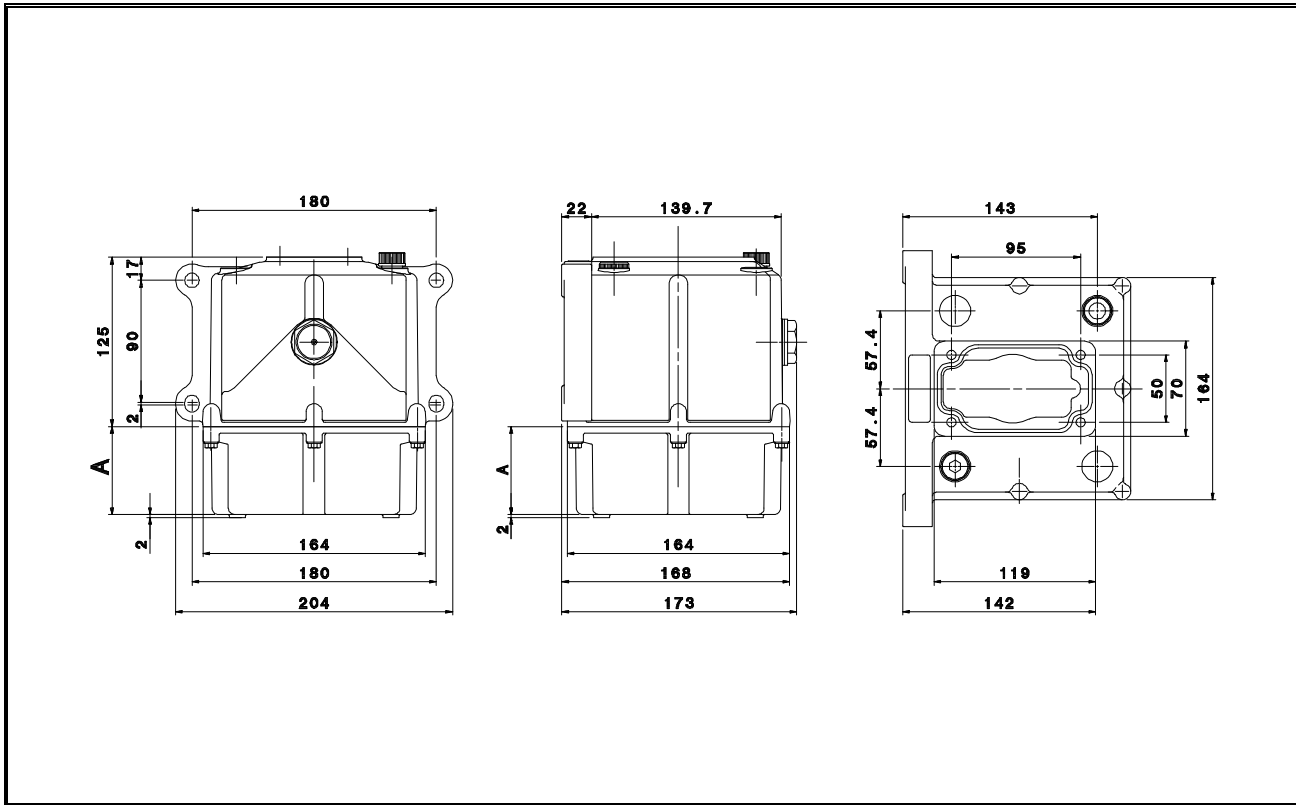
MAINTENANCE

Pump maintenance is very simple and it is just about checking oil sealing.



Picture 3 (oil seal checking)

DIMENSIONS AND PART NUMBERS



Picture 4 (tank dimensions)

Specifications and part numbers					
Part number	Description	"A" (mm)	Capacity (liter)	Oil readout	Weight (kg)
2.16.039.0000	Tank 02 lt PMP.MNO.	25	02	No	1,5
2.16.040.0000	Tank 02 lt PMP.MNO. with oil level readout			Yes	
2.16.041.0000	Tank 03 lt PMP.MNO.	70	03	No	1,6
2.16.042.0000	Tank 03 lt PMP.MNO. with oil level readout			Yes	
2.16.043.0000	Tank 05 lt PMP.MNO.	180	05	No	1,8
2.16.044.0000	Tank 05 lt PMP.MNO. with oil level readout			Yes	

Table 2 (Tank specifications and part numbers)

WARNING

Current Edition 28/07/2002 of our catalogue is replacing any previous document.

Dimensions and other specifications contained in this catalogue are suitable of modification at our discretion without previous notice. Drawings contained in this catalogue are subject to copyright Always mention our ordering codes or part numbers. General sales conditions are specified in our currently valid price list.